

**DATASHEET**

**CNPY3 Rabbit Polyclonal Antibody**

CAT. NO. APA13388

**KEY FEATURES**

|               |                                                                                                           |               |                    |
|---------------|-----------------------------------------------------------------------------------------------------------|---------------|--------------------|
| Target        | CNPY3                                                                                                     | Source / Host | Rabbit             |
| Reactivity    | Human                                                                                                     | Clonality     | Polyclonal         |
| Applications  | WB, IHC                                                                                                   | Conjugation   | Unconjugated       |
| Form / Buffer | Liquid in 0.42% Potassium phosphate, 0.87% Sodium chloride, pH 7.3, 30% glycerol, and 0.01% sodium azide. |               | Storage<br>at-20°C |

**BACKGROUND**

Toll-like receptor (TLR)-specific co-chaperone for HSP90B1. Required for proper TLR folding, except that of TLR3, and hence controls TLR exit from the endoplasmic reticulum. Consequently, required for both innate and adaptive immune responses .

**APPLICATION**

To ensure optimal assay performance, AREX recommends conducting reagent titration tailored to each testing system for optimal detection results.

|     |                |
|-----|----------------|
| WB  | 1:500 - 1:2000 |
| IHC | 1:50 - 1:200   |

\*Results are sample-specific. Please refer to your local assay conditions and test parameters for reference.

**PRODUCT OVERVIEW**

|                   |                                                                                                                                                                                                      |
|-------------------|------------------------------------------------------------------------------------------------------------------------------------------------------------------------------------------------------|
| Description       | Rabbit polyclonal antibody to CNPY3                                                                                                                                                                  |
| Specificity       | Recognizes endogenous levels of CNPY3 protein.                                                                                                                                                       |
| Antibody Type     | Primary antibody                                                                                                                                                                                     |
| Immunogen         | Recombinant fusion protein of human CNPY3                                                                                                                                                            |
| Purification      | The antibody was purified by immunogen affinity chromatography.                                                                                                                                      |
| Molecular Weight  | Predicted: 5; Observed: 38 kD                                                                                                                                                                        |
| Form/Buffer       | Liquid in 0.42% Potassium phosphate, 0.87% Sodium chloride, pH 7.3, 30% glycerol, and 0.01% sodium azide.                                                                                            |
| Alternative Names | CTG4A; ERDA5; PRAT4A; TNRC5; Protein canopy homolog 3; CTG repeat protein 4a; Expanded repeat-domain protein CAG/CTG 5; Protein associated with TLR4; Trinucleotide repeat-containing gene 5 protein |
| Gene Symbol       | CNPY3                                                                                                                                                                                                |
| Entrez Gene       | 10695(Human)                                                                                                                                                                                         |
| SwissProt         | Q9BT09(Human)                                                                                                                                                                                        |

\*AREX continuously optimizes our products. Webpage content may not reflect the latest updates. For inquiries, please contact [info@arexbio.com](mailto:info@arexbio.com) or your local distributor.

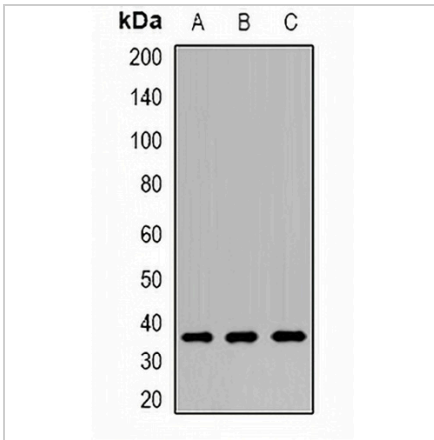
\*Clone Number, Reactivity, Source/Host and Clonality can be found in the product name and Key Features section above.

**DATASHEET**

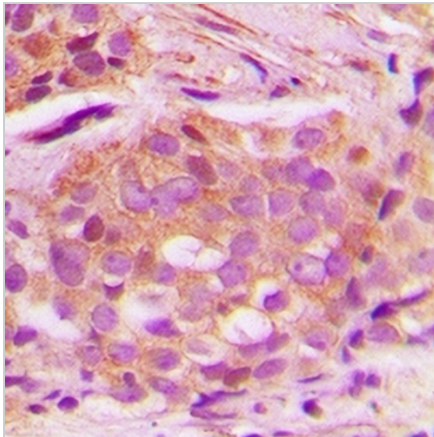
**CNPY3 Rabbit Polyclonal Antibody**

CAT. NO. APA13388

**DATA**



Western blot analysis of CNPY3 expression in MCF7 (A), THP1 (B), HL60 (C) whole cell lysates. (Predicted band size: 5; 30 kD; Observed band size: 38 kD)



Immunohistochemical analysis of CNPY3 staining in human breast cancer formalin fixed paraffin embedded tissue section. The section was pre-treated using heat mediated antigen retrieval with sodium citrate buffer (pH 6.0). The section was then incubated with the antibody at room temperature and detected using an HRP conjugated compact polymer system. DAB was used as the chromogen. The section was then counterstained with haematoxylin and mounted with DPX.

**STORAGE**

Store at 4°C short term. For long term storage, store at -20°C, avoiding freeze/thaw cycles.

**NOTE**

For Research Use Only. Not for diagnostic, therapeutics, prophylactic or in vivo use.