

DATASHEET

CNTFR alpha Rabbit Polyclonal Antibody

CAT. NO. APA13389

KEY FEATURES

Target	CNTFR alpha	Source / Host	Rabbit
Reactivity	Human, Mouse, Rat	Clonality	Polyclonal
Applications	WB	Conjugation	Unconjugated
Form / Buffer	Liquid in 0.42% Potassium phosphate, 0.87% Sodium chloride, pH 7.3, 30% glycerol, and 0.01% sodium azide.		Storage at-20°C

BACKGROUND

Binds to CNTF. The alpha subunit provides the receptor specificity. Receptor for heterodimeric neurotrophic cytokine composed of CLCF1/CLC and CRLF1/CLF-1 . Acts as a receptor for the neuroprotective peptide humanin as part of a complex with IL6ST/GP130 and IL27RA/WSX1 .

APPLICATION

To ensure optimal assay performance, AREX recommends conducting reagent titration tailored to each testing system for optimal detection results.

WB	1:500 - 1:1000
----	----------------

*Results are sample-specific. Please refer to your local assay conditions and test parameters for reference.

PRODUCT OVERVIEW

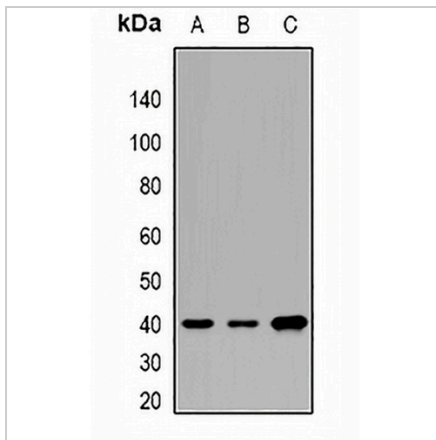
Description	Rabbit polyclonal antibody to CNTFR alpha
Specificity	Recognizes endogenous levels of CNTFR alpha protein.
Antibody Type	Primary antibody
Immunogen	KLH-conjugated synthetic peptide of human CNTFR alpha
Purification	The antibody was purified by immunogen affinity chromatography.
Molecular Weight	Predicted: 40 kD; Observed: 41 kD
Form/Buffer	Liquid in 0.42% Potassium phosphate, 0.87% Sodium chloride, pH 7.3, 30% glycerol, and 0.01% sodium azide.
Alternative Names	Ciliary neurotrophic factor receptor subunit alpha; CNTF receptor subunit alpha; CNTFR-alpha
Gene Symbol	CNTFR
Entrez Gene	1271(Human); 12804(Mouse); 313173(Rat)
SwissProt	P26992(Human); O88507(Mouse); Q08406(Rat)

*AREX continuously optimizes our products. Webpage content may not reflect the latest updates. For inquiries, please contact info@arexbio.com or your local distributor.

*Clone Number, Reactivity, Source/Host and Clonality can be found in the product name and Key Features section above.

DATASHEET**CNTFR alpha Rabbit Polyclonal Antibody**

CAT. NO. APA13389

DATA

Western blot analysis of CNTFR alpha expression in SW620 (A), BT474 (B), mouse brain (C) whole cell lysates. (Predicted band size: 40 kD; Observed band size: 41 kD)

STORAGE

Store at 4°C short term. For long term storage, store at -20°C, avoiding freeze/thaw cycles.

NOTE

For Research Use Only. Not for diagnostic, therapeutics, prophylactic or in vivo use.