

DATASHEET

Alpha-crystallin A Rabbit Polyclonal Antibody

CAT. NO. APA13394

KEY FEATURES

Target	Alpha-crystallin A	Source / Host	Rabbit
Reactivity	Human, Mouse, Rat	Clonality	Polyclonal
Applications	WB, IF/ICC	Conjugation	Unconjugated
Form / Buffer	Liquid in 0.42% Potassium phosphate, 0.87% Sodium chloride, pH 7.3, 30% glycerol, and 0.01% sodium azide.		Storage at -20°C

BACKGROUND

Contributes to the transparency and refractive index of the lens . In its oxidized form (absence of intramolecular disulfide bond), acts as a chaperone, preventing aggregation of various proteins under a wide range of stress conditions . Required for the correct formation of lens intermediate filaments as part of a complex composed of BFSP1, BFSP2 and CRYAA .

APPLICATION

To ensure optimal assay performance, AREX recommends conducting reagent titration tailored to each testing system for optimal detection results.

WB	1:500 - 1:1000
IF/ICC	1:50 - 1:200

*Results are sample-specific. Please refer to your local assay conditions and test parameters for reference.

PRODUCT OVERVIEW

Description	Rabbit polyclonal antibody to Alpha-crystallin A
Specificity	Recognizes endogenous levels of Alpha-crystallin A protein.
Antibody Type	Primary antibody
Immunogen	Recombinant fusion protein of human Alpha-crystallin A
Purification	The antibody was purified by immunogen affinity chromatography.
Molecular Weight	Predicted: 19 kD; Observed: 23 kD
Form/Buffer	Liquid in 0.42% Potassium phosphate, 0.87% Sodium chloride, pH 7.3, 30% glycerol, and 0.01% sodium azide.
Alternative Names	CRYA1; HSPB4; Alpha-crystallin A chain; Heat shock protein beta-4; HspB4
Gene Symbol	CRYAA
Entrez Gene	102724652; 1409(Human); 12954(Mouse); 24273(Rat)
SwissProt	P02489(Human); P24622(Mouse); P24623(Rat)

*AREX continuously optimizes our products. Webpage content may not reflect the latest updates. For inquiries, please contact info@arexbio.com or your local distributor.

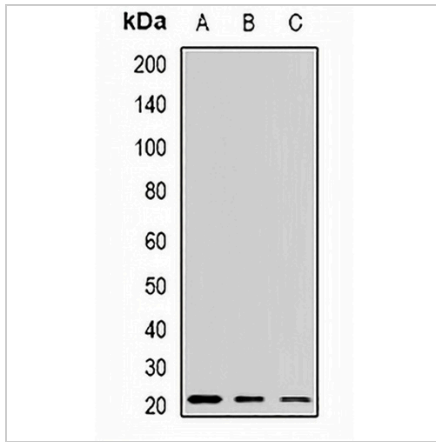
*Clone Number, Reactivity, Source/Host and Clonality can be found in the product name and Key Features section above.

DATASHEET

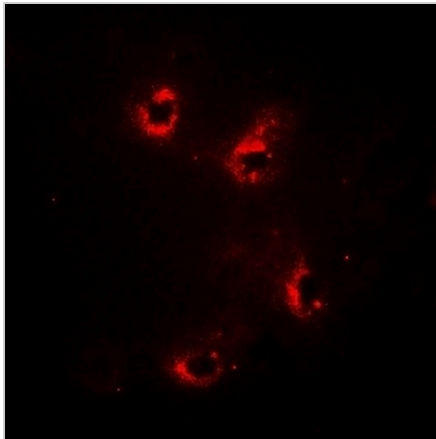
Alpha-crystallin A Rabbit Polyclonal Antibody

CAT. NO. APA13394

DATA



Western blot analysis of Alpha-crystallin A expression in mouse kidney (A), mouse liver (B), mouse heart (C) whole cell lysates. (Predicted band size: 19 kD; Observed band size: 23 kD)



Immunofluorescent analysis of Alpha-crystallin A staining in HeLa cells. Formalin-fixed cells were permeabilized with 0.1% Triton X-100 in TBS for 5-10 minutes and blocked with 3% BSA-PBS for 30 minutes at room temperature. Cells were probed with the primary antibody in 3% BSA-PBS and incubated overnight at 4 °C in a humidified chamber. Cells were washed with PBST and incubated with a DyLight 594-conjugated secondary antibody (red) in PBS at room temperature in the dark.

STORAGE

Store at 4°C short term. For long term storage, store at -20°C, avoiding freeze/thaw cycles.

NOTE

For Research Use Only. Not for diagnostic, therapeutics, prophylactic or in vivo use.