

DATASHEET

CD152 Rabbit Polyclonal Antibody

CAT. NO. APA13398

KEY FEATURES

Target	CD152	Source / Host	Rabbit
Reactivity	Human, Mouse, Rat	Clonality	Polyclonal
Applications	WB	Conjugation	Unconjugated
Form / Buffer	Liquid in 0.42% Potassium phosphate, 0.87% Sodium chloride, pH 7.3, 30% glycerol, and 0.01% sodium azide.		Storage at -20°C

BACKGROUND

Inhibitory receptor acting as a major negative regulator of T-cell responses . Acts as a decoy receptor: the affinity of CTLA4 for its natural B7 family ligands, CD80 and CD86, is considerably stronger than the affinity of their cognate stimulatory coreceptor CD28 .

APPLICATION

To ensure optimal assay performance, AREX recommends conducting reagent titration tailored to each testing system for optimal detection results.

WB	1:500 - 1:2000
----	----------------

*Results are sample-specific. Please refer to your local assay conditions and test parameters for reference.

PRODUCT OVERVIEW

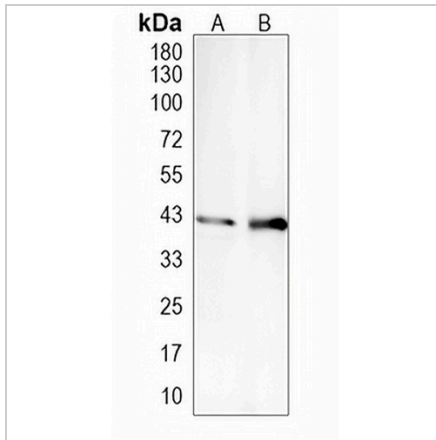
Description	Rabbit polyclonal antibody to CD152
Specificity	Recognizes endogenous levels of CD152 protein.
Antibody Type	Primary antibody
Immunogen	Recombinant fusion protein of human CD152
Purification	The antibody was purified by immunogen affinity chromatography.
Molecular Weight	Predicted: 6; Observed: 30 kD
Form/Buffer	Liquid in 0.42% Potassium phosphate, 0.87% Sodium chloride, pH 7.3, 30% glycerol, and 0.01% sodium azide.
Alternative Names	CD152; Cytotoxic T-lymphocyte protein 4; Cytotoxic T-lymphocyte-associated antigen 4; CTLA-4; CD152
Gene Symbol	CTLA4
Entrez Gene	1493(Human); 12477(Mouse)
SwissProt	P16410(Human); P09793(Mouse)

*AREX continuously optimizes our products. Webpage content may not reflect the latest updates. For inquiries, please contact info@arexbio.com or your local distributor.

*Clone Number, Reactivity, Source/Host and Clonality can be found in the product name and Key Features section above.

DATASHEET**CD152 Rabbit Polyclonal Antibody**

CAT. NO. APA13398

DATA

Western blot analysis of CD152 expression in K562 (A), mouse spleen (B), rat thymus (C) whole cell lysates. (Predicted band size: 6; 8; 19; 24 kD; Observed band size: 30 kD)

STORAGE

Store at 4°C short term. For long term storage, store at -20°C, avoiding freeze/thaw cycles.

NOTE

For Research Use Only. Not for diagnostic, therapeutics, prophylactic or in vivo use.