

DATASHEET

Cullin 5 Rabbit Polyclonal Antibody

CAT. NO. APA13401

KEY FEATURES

Target	Cullin 5	Source / Host	Rabbit
Reactivity	Human, Mouse, Rat	Clonality	Polyclonal
Applications	WB, IF/ICC	Conjugation	Unconjugated
Form / Buffer	Liquid in 0.42% Potassium phosphate, 0.87% Sodium chloride, pH 7.3, 30% glycerol, and 0.01% sodium azide.		Storage at -20°C

BACKGROUND

Core component of multiple cullin-5-RING E3 ubiquitin-protein ligase complexes (ECS complexes, also named CRL5 complexes), which mediate the ubiquitination and subsequent proteasomal degradation of target proteins, which mediate the ubiquitination and subsequent proteasomal degradation of target proteins. Acts as a scaffold protein that contributes to catalysis through positioning of the substrate and the ubiquitin-conjugating enzyme. The functional specificity of the E3 ubiquitin-protein ligase complex depends on the variable SOCS box-containing substrate recognition component.

APPLICATION

To ensure optimal assay performance, AREX recommends conducting reagent titration tailored to each testing system for optimal detection results.

WB	1:500 - 1:2000
IF/ICC	1:50 - 1:200

*Results are sample-specific. Please refer to your local assay conditions and test parameters for reference.

PRODUCT OVERVIEW

Description	Rabbit polyclonal antibody to Cullin 5
Specificity	Recognizes endogenous levels of Cullin 5 protein.
Antibody Type	Primary antibody
Immunogen	Recombinant fusion protein of human Cullin 5
Purification	The antibody was purified by immunogen affinity chromatography.
Molecular Weight	Predicted: 90 kD; Observed: 100 kD
Form/Buffer	Liquid in 0.42% Potassium phosphate, 0.87% Sodium chloride, pH 7.3, 30% glycerol, and 0.01% sodium azide.
Alternative Names	VACM1; Cullin-5; CUL-5; Vasopressin-activated calcium-mobilizing receptor 1; VACM-1
Gene Symbol	CUL5
Entrez Gene	8065(Human); 75717(Mouse); 64624(Rat)
SwissProt	Q93034(Human); Q9D5V5(Mouse); Q9JJ31(Rat)

*AREX continuously optimizes our products. Webpage content may not reflect the latest updates. For inquiries, please contact info@arexbio.com or your local distributor.

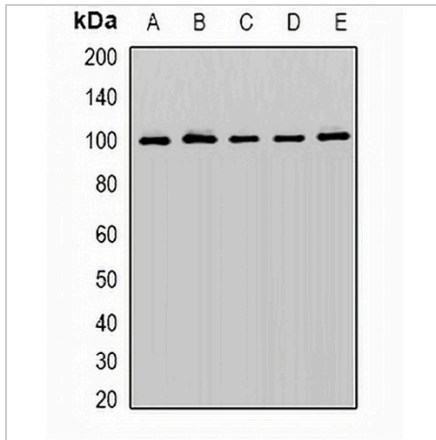
*Clone Number, Reactivity, Source/Host and Clonality can be found in the product name and Key Features section above.

DATASHEET

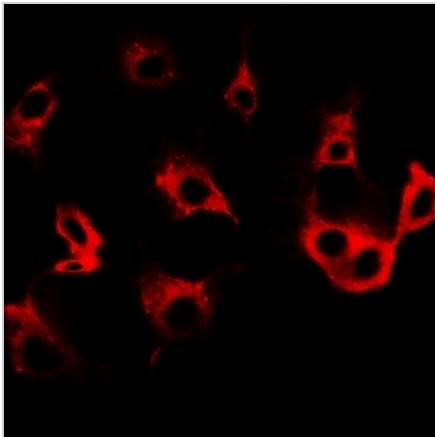
Cullin 5 Rabbit Polyclonal Antibody

CAT. NO. APA13401

DATA



Western blot analysis of Cullin 5 expression in K562 (A), PC3 (B), SW480 (C), mouse brain (D), mouse heart (E) whole cell lysates. (Predicted band size: 90 kD; Observed band size: 100 kD)



Immunofluorescent analysis of Cullin 5 staining in SW480 cells. Formalin-fixed cells were permeabilized with 0.1% Triton X-100 in TBS for 5-10 minutes and blocked with 3% BSA-PBS for 30 minutes at room temperature. Cells were probed with the primary antibody in 3% BSA-PBS and incubated overnight at 4 °C in a humidified chamber. Cells were washed with PBST and incubated with a DyLight 594-conjugated secondary antibody (red) in PBS at room temperature in the dark.

STORAGE

Store at 4°C short term. For long term storage, store at -20°C, avoiding freeze/thaw cycles.

NOTE

For Research Use Only. Not for diagnostic, therapeutics, prophylactic or in vivo use.