

DATASHEET

Cytochrome P450 2F1 Rabbit Polyclonal Antibody

CAT. NO. APA13403

KEY FEATURES

Target	Cytochrome P450 2F1	Source / Host	Rabbit
Reactivity	Human, Mouse, Rat	Clonality	Polyclonal
Applications	WB, IHC	Conjugation	Unconjugated
Form / Buffer	Liquid in 0.42% Potassium phosphate, 0.87% Sodium chloride, pH 7.3, 30% glycerol, and 0.01% sodium azide.		Storage at -20°C

BACKGROUND

May be involved in the metabolism of various pneumotoxicants including naphthalene. Is able to dealkylate ethoxycoumarin, propoxycoumarin, and pentoxyresorufin but possesses no activity toward ethoxyresorufin and only trace dearylation activity toward benzyloxyresorufin. Bioactivates 3-methylindole (3MI) by dehydrogenation to the putative electrophile 3-methylene-indolenine.

APPLICATION

To ensure optimal assay performance, AREX recommends conducting reagent titration tailored to each testing system for optimal detection results.

WB	1:500 - 1:1000
IHC	1:50 - 1:200

*Results are sample-specific. Please refer to your local assay conditions and test parameters for reference.

PRODUCT OVERVIEW

Description	Rabbit polyclonal antibody to Cytochrome P450 2F1
Specificity	Recognizes endogenous levels of Cytochrome P450 2F1 protein.
Antibody Type	Primary antibody
Immunogen	Recombinant fusion protein of human Cytochrome P450 2F1
Purification	The antibody was purified by immunogen affinity chromatography.
Molecular Weight	Predicted: 36; Observed: 46-54 kD
Form/Buffer	Liquid in 0.42% Potassium phosphate, 0.87% Sodium chloride, pH 7.3, 30% glycerol, and 0.01% sodium azide.
Alternative Names	Cytochrome P450 2F1; CYP11F1
Gene Symbol	CYP2F1
Entrez Gene	1572(Human)
SwissProt	P24903(Human)

*AREX continuously optimizes our products. Webpage content may not reflect the latest updates. For inquiries, please contact info@arexbio.com or your local distributor.

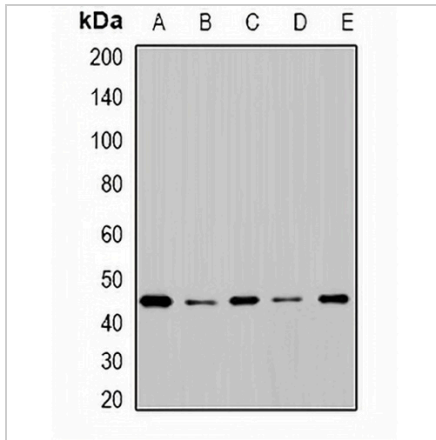
*Clone Number, Reactivity, Source/Host and Clonality can be found in the product name and Key Features section above.

DATASHEET

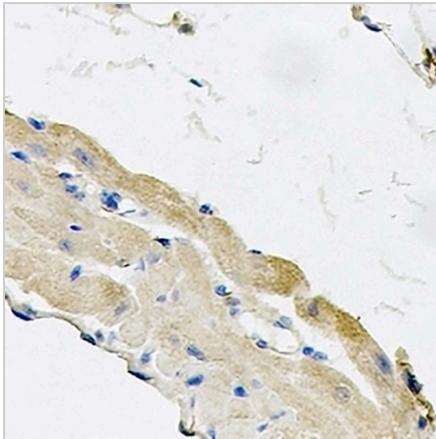
Cytochrome P450 2F1 Rabbit Polyclonal Antibody

CAT. NO. APA13403

DATA



Western blot analysis of Cytochrome P450 2F1 expression in SW620 (A), BT474 (B), mouse lung (C), mouse liver (D), rat brain (E) whole cell lysates. (Predicted band size: 36; 55 kD; Observed band size: 46-54 kD)



Immunohistochemical analysis of Cytochrome P450 2F1 staining in mouse lung formalin fixed paraffin embedded tissue section. The section was pre-treated using heat mediated antigen retrieval with sodium citrate buffer (pH 6.0). The section was then incubated with the antibody at room temperature and detected using an HRP conjugated compact polymer system. DAB was used as the chromogen. The section was then counterstained with haematoxylin and mounted with DPX.

STORAGE

Store at 4°C short term. For long term storage, store at -20°C, avoiding freeze/thaw cycles.

NOTE

For Research Use Only. Not for diagnostic, therapeutics, prophylactic or in vivo use.