

DATASHEET

Cytochrome P450 3A5 Rabbit Polyclonal Antibody

CAT. NO. APA13404

KEY FEATURES

Target	Cytochrome P450 3A5	Source / Host	Rabbit
Reactivity	Human	Clonality	Polyclonal
Applications	WB	Conjugation	Unconjugated
Form / Buffer	Liquid in 0.42% Potassium phosphate, 0.87% Sodium chloride, pH 7.3, 30% glycerol, and 0.01% sodium azide.		Storage at-20°C

BACKGROUND

A cytochrome P450 monooxygenase involved in the metabolism of steroid hormones and vitamins . Mechanistically, uses molecular oxygen inserting one oxygen atom into a substrate, and reducing the second into a water molecule, with two electrons provided by NADPH via cytochrome P450 reductase (NADPH--hemoprotein reductase). Catalyzes the hydroxylation of carbon-hydrogen bonds . Exhibits high catalytic activity for the formation of catechol estrogens from 17beta-estradiol (E2) and estrone (E1), namely 2-hydroxy E1 and E2 . Catalyzes 6beta-hydroxylation of the steroid hormones testosterone, progesterone, and androstenedione . Catalyzes the oxidative conversion of all-trans-retinol to all-trans-retinal, a rate-limiting step for the biosynthesis of all-trans-retinoic acid (atRA) .

APPLICATION

To ensure optimal assay performance, AREX recommends conducting reagent titration tailored to each testing system for optimal detection results.

WB	1:500 - 1:2000
----	----------------

*Results are sample-specific. Please refer to your local assay conditions and test parameters for reference.

PRODUCT OVERVIEW

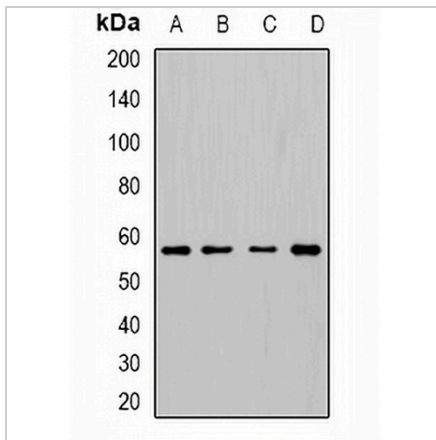
Description	Rabbit polyclonal antibody to Cytochrome P450 3A5
Specificity	Recognizes endogenous levels of Cytochrome P450 3A5 protein.
Antibody Type	Primary antibody
Immunogen	Recombinant fusion protein of human Cytochrome P450 3A5
Purification	The antibody was purified by immunogen affinity chromatography.
Molecular Weight	Predicted: 15; Observed: 57 kD
Form/Buffer	Liquid in 0.42% Potassium phosphate, 0.87% Sodium chloride, pH 7.3, 30% glycerol, and 0.01% sodium azide.
Alternative Names	Cytochrome P450 3A5; CYP3A5; Cytochrome P450 HLp2; Cytochrome P450-PCN3
Gene Symbol	CYP3A5
Entrez Gene	1577(Human)
SwissProt	P20815(Human)

*AREX continuously optimizes our products. Webpage content may not reflect the latest updates. For inquiries, please contact info@arexbio.com or your local distributor.

*Clone Number, Reactivity, Source/Host and Clonality can be found in the product name and Key Features section above.

DATASHEET**Cytochrome P450 3A5 Rabbit Polyclonal Antibody**

CAT. NO. APA13404

DATA

Western blot analysis of Cytochrome P450 3A5 expression in HepG2 (A), SW480 (B), mouse lung (C), mouse thymus (D) whole cell lysates. (Predicted band size: 15; 57 kD; Observed band size: 57 kD)

STORAGE

Store at 4°C short term. For long term storage, store at -20°C, avoiding freeze/thaw cycles.

NOTE

For Research Use Only. Not for diagnostic, therapeutics, prophylactic or in vivo use.