

DATASHEET

SMAC Rabbit Polyclonal Antibody

CAT. NO. APA13413

KEY FEATURES

Target	SMAC	Source / Host	Rabbit
Reactivity	Human, Mouse, Rat	Clonality	Polyclonal
Applications	WB, IHC	Conjugation	Unconjugated
Form / Buffer	Liquid in 0.42% Potassium phosphate, 0.87% Sodium chloride, pH 7.3, 30% glycerol, and 0.01% sodium azide.		Storage at-20°C

BACKGROUND

Promotes apoptosis by activating caspases in the cytochrome c/Apaf-1/caspase-9 pathway. Acts by opposing the inhibitory activity of inhibitor of apoptosis proteins (IAP). Inhibits the activity of BIRC6/BRUCE by inhibiting its binding to caspases . Inhibits the activity of BIRC6/BRUCE by inhibiting its binding to caspases .

APPLICATION

To ensure optimal assay performance, AREX recommends conducting reagent titration tailored to each testing system for optimal detection results.

WB	1:500 - 1:2000
IHC	1:50 - 1:200

*Results are sample-specific. Please refer to your local assay conditions and test parameters for reference.

PRODUCT OVERVIEW

Description	Rabbit polyclonal antibody to SMAC
Specificity	Recognizes endogenous levels of SMAC protein.
Antibody Type	Primary antibody
Immunogen	Recombinant fusion protein of human SMAC
Purification	The antibody was purified by immunogen affinity chromatography.
Molecular Weight	Predicted: 21; Observed: 20 kD
Form/Buffer	Liquid in 0.42% Potassium phosphate, 0.87% Sodium chloride, pH 7.3, 30% glycerol, and 0.01% sodium azide.
Alternative Names	SMAC; Diablo homolog mitochondrial; Direct IAP-binding protein with low pI; Second mitochondria-derived activator of caspase; Smac
Gene Symbol	DIABLO
Entrez Gene	56616(Human); 66593(Mouse)
SwissProt	Q9NR28(Human); Q9JIQ3(Mouse)

*AREX continuously optimizes our products. Webpage content may not reflect the latest updates. For inquiries, please contact info@arexbio.com or your local distributor.

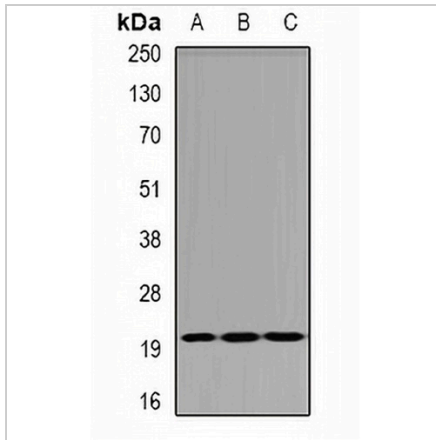
*Clone Number, Reactivity, Source/Host and Clonality can be found in the product name and Key Features section above.

DATASHEET

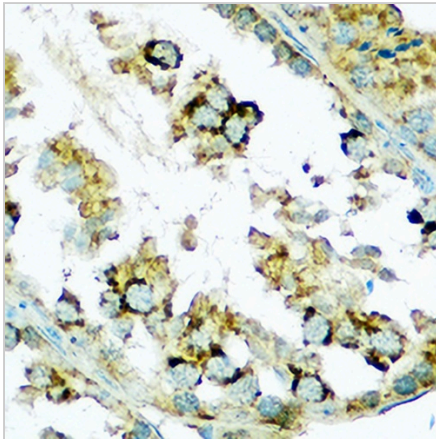
SMAC Rabbit Polyclonal Antibody

CAT. NO. APA13413

DATA



Western blot analysis of SMAC expression in SW620 (A), BT474 (B), mouse spleen (C) whole cell lysates. (Predicted band size: 21; 22; 27 kD; Observed band size: 20 kD)



Immunohistochemical analysis of SMAC staining in mouse testis formalin fixed paraffin embedded tissue section. The section was pre-treated using heat mediated antigen retrieval with sodium citrate buffer (pH 6.0). The section was then incubated with the antibody at room temperature and detected using an HRP conjugated compact polymer system. DAB was used as the chromogen. The section was then counterstained with haematoxylin and mounted with DPX.

STORAGE

Store at 4°C short term. For long term storage, store at -20°C, avoiding freeze/thaw cycles.

NOTE

For Research Use Only. Not for diagnostic, therapeutics, prophylactic or in vivo use.