

**DATASHEET**

**Dopamine Receptor D5 Rabbit Polyclonal Antibody**

CAT. NO. APA13420

**KEY FEATURES**

Target	Dopamine Receptor D5	Source / Host	Rabbit
Reactivity	Human, Mouse, Rat	Clonality	Polyclonal
Applications	WB	Conjugation	Unconjugated
Form / Buffer	Liquid in 0.42% Potassium phosphate, 0.87% Sodium chloride, pH 7.3, 30% glycerol, and 0.01% sodium azide.	Storage	at-20°C

**BACKGROUND**

Dopamine receptor whose activity is mediated by G proteins which activate adenylyl cyclase.

**APPLICATION**

To ensure optimal assay performance, AREX recommends conducting reagent titration tailored to each testing system for optimal detection results.

WB	1:500 - 1:1000
----	----------------

\*Results are sample-specific. Please refer to your local assay conditions and test parameters for reference.

**PRODUCT OVERVIEW**

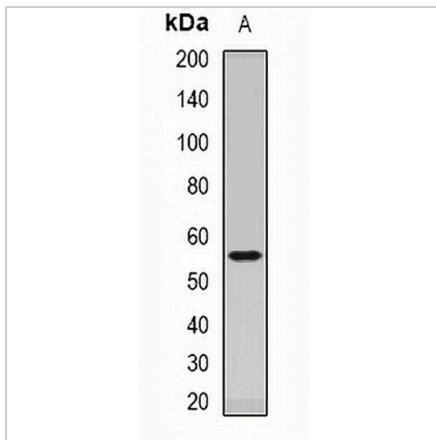
Description	Rabbit polyclonal antibody to Dopamine Receptor D5
Specificity	Recognizes endogenous levels of Dopamine Receptor D5 protein.
Antibody Type	Primary antibody
Immunogen	Recombinant fusion protein of human Dopamine Receptor D5
Purification	The antibody was purified by immunogen affinity chromatography.
Molecular Weight	Predicted: 52 kD; Observed: 55 kD
Form/Buffer	Liquid in 0.42% Potassium phosphate, 0.87% Sodium chloride, pH 7.3, 30% glycerol, and 0.01% sodium azide.
Alternative Names	DRD1B; DRD1L2; D(1B) dopamine receptor; D(5) dopamine receptor; D1 beta dopamine receptor; Dopamine D5 receptor
Gene Symbol	DRD5
Entrez Gene	1816(Human); 13492(Mouse); 25195(Rat)
SwissProt	P21918(Human); Q8BLD9(Mouse); P25115(Rat)

\*AREX continuously optimizes our products. Webpage content may not reflect the latest updates. For inquiries, please contact [info@arexbio.com](mailto:info@arexbio.com) or your local distributor.

\*Clone Number, Reactivity, Source/Host and Clonality can be found in the product name and Key Features section above.

**DATASHEET****Dopamine Receptor D5 Rabbit Polyclonal Antibody**

CAT. NO. APA13420

**DATA**

Western blot analysis of Dopamine Receptor D5 expression in mouse brain (A) whole cell lysates. (Predicted band size: 52 kD; Observed band size: 55 kD)

**STORAGE**

Store at 4°C short term. For long term storage, store at -20°C, avoiding freeze/thaw cycles.

**NOTE**

For Research Use Only. Not for diagnostic, therapeutics, prophylactic or in vivo use.