

DATASHEET

GCN2 Rabbit Polyclonal Antibody

CAT. NO. APA13425

KEY FEATURES

Target	GCN2	Source / Host	Rabbit
Reactivity	Human, Mouse, Rat	Clonality	Polyclonal
Applications	WB, IF/ICC	Conjugation	Unconjugated
Form / Buffer	Liquid in 0.42% Potassium phosphate, 0.87% Sodium chloride, pH 7.3, 30% glycerol, and 0.01% sodium azide.		Storage at -20°C

BACKGROUND

Metabolic-stress sensing protein kinase that phosphorylates the alpha subunit of eukaryotic translation initiation factor 2 (EIF2S1/eIF-2-alpha) in response to low amino acid availability in response to low amino acid availability . Plays a role as an activator of the integrated stress response (ISR) required for adaptation to amino acid starvation .

APPLICATION

To ensure optimal assay performance, AREX recommends conducting reagent titration tailored to each testing system for optimal detection results.

WB	1:500 - 1:1000
IF/ICC	1:50 - 1:200

*Results are sample-specific. Please refer to your local assay conditions and test parameters for reference.

PRODUCT OVERVIEW

Description	Rabbit polyclonal antibody to GCN2
Specificity	Recognizes endogenous levels of GCN2 protein.
Antibody Type	Primary antibody
Immunogen	Recombinant fusion protein of human GCN2
Purification	The antibody was purified by immunogen affinity chromatography.
Molecular Weight	Predicted: 69; Observed: 220 kD
Form/Buffer	Liquid in 0.42% Potassium phosphate, 0.87% Sodium chloride, pH 7.3, 30% glycerol, and 0.01% sodium azide.
Alternative Names	GCN2; KIAA1338; Eukaryotic translation initiation factor 2-alpha kinase 4; GCN2-like protein
Gene Symbol	EIF2AK4
Entrez Gene	440275(Human)
SwissProt	Q9P2K8(Human)

*AREX continuously optimizes our products. Webpage content may not reflect the latest updates. For inquiries, please contact info@arexbio.com or your local distributor.

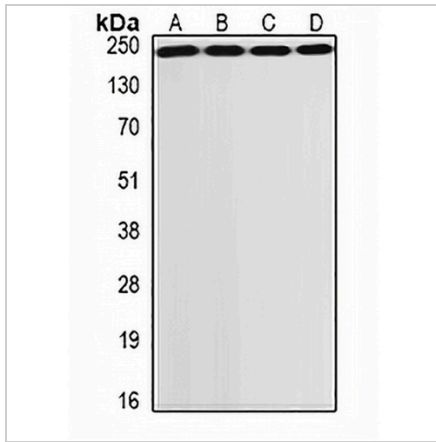
*Clone Number, Reactivity, Source/Host and Clonality can be found in the product name and Key Features section above.

DATASHEET

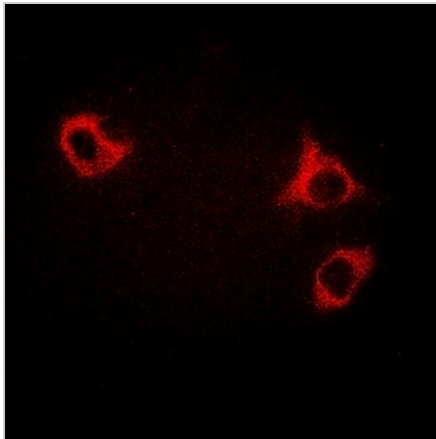
GCN2 Rabbit Polyclonal Antibody

CAT. NO. APA13425

DATA



Western blot analysis of GCN2 expression in SKOV3 (A), HepG2 (B), MCF7 (C), rat lung (D) whole cell lysates. (Predicted band size: 69; 183; 186 kD; Observed band size: 220 kD)



Immunofluorescent analysis of GCN2 staining in HepG2 cells. Formalin-fixed cells were permeabilized with 0.1% Triton X-100 in TBS for 5-10 minutes and blocked with 3% BSA-PBS for 30 minutes at room temperature. Cells were probed with the primary antibody in 3% BSA-PBS and incubated overnight at 4 °C in a humidified chamber. Cells were washed with PBST and incubated with a DyLight 594-conjugated secondary antibody (red) in PBS at room temperature in the dark.

STORAGE

Store at 4°C short term. For long term storage, store at -20°C, avoiding freeze/thaw cycles.

NOTE

For Research Use Only. Not for diagnostic, therapeutics, prophylactic or in vivo use.