

DATASHEET

EIF3A Rabbit Polyclonal Antibody

CAT. NO. APA13426

KEY FEATURES

Target	EIF3A	Source / Host	Rabbit
Reactivity	Human, Mouse, Rat	Clonality	Polyclonal
Applications	WB, IF/ICC	Conjugation	Unconjugated
Form / Buffer	Liquid in 0.42% Potassium phosphate, 0.87% Sodium chloride, pH 7.3, 30% glycerol, and 0.01% sodium azide.		Storage at -20°C

BACKGROUND

RNA-binding component of the eukaryotic translation initiation factor 3 (eIF-3) complex, which is required for several steps in the initiation of protein synthesis complex, which is required for several steps in the initiation of protein synthesis. The eIF-3 complex associates with the 40S ribosome and facilitates the recruitment of eIF-1, eIF-1A, eIF-2:GTP:methionyl-tRNAⁱ and eIF-5 to form the 43S pre-initiation complex (43S PIC). The eIF-3 complex stimulates mRNA recruitment to the 43S PIC and scanning of the mRNA for AUG recognition. The eIF-3 complex is also required for disassembly and recycling of post-termination ribosomal complexes and subsequently prevents premature joining of the 40S and 60S ribosomal subunits prior to initiation.

APPLICATION

To ensure optimal assay performance, AREX recommends conducting reagent titration tailored to each testing system for optimal detection results.

WB	1:500 - 1:1000
IF/ICC	1:50 - 1:200

*Results are sample-specific. Please refer to your local assay conditions and test parameters for reference.

PRODUCT OVERVIEW

Description	Rabbit polyclonal antibody to EIF3A
Specificity	Recognizes endogenous levels of EIF3A protein.
Antibody Type	Primary antibody
Immunogen	Recombinant fusion protein of human EIF3A
Purification	The antibody was purified by immunogen affinity chromatography.
Molecular Weight	Predicted: 162; Observed: 180 kD
Form/Buffer	Liquid in 0.42% Potassium phosphate, 0.87% Sodium chloride, pH 7.3, 30% glycerol, and 0.01% sodium azide.
Alternative Names	EIF3S10; KIAA0139; Eukaryotic translation initiation factor 3 subunit A; eIF3a; Eukaryotic translation initiation factor 3 subunit 10; eIF-3-theta; eIF3 p167; eIF3 p180; eIF3 p185
Gene Symbol	EIF3A
Entrez Gene	8661(Human); 13669(Mouse); 292148(Rat)
SwissProt	Q14152(Human); P23116(Mouse); Q1JU68(Rat)

*AREX continuously optimizes our products. Webpage content may not reflect the latest updates. For inquiries, please contact info@arexbio.com or your local distributor.

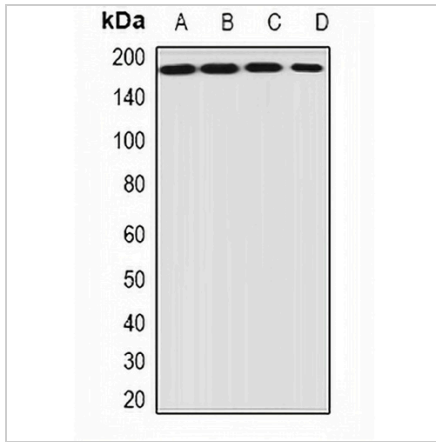
*Clone Number, Reactivity, Source/Host and Clonality can be found in the product name and Key Features section above.

DATASHEET

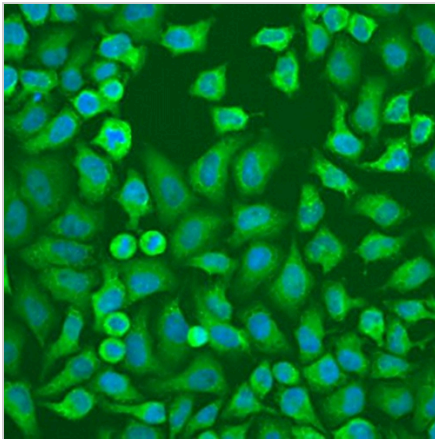
EIF3A Rabbit Polyclonal Antibody

CAT. NO. APA13426

DATA



Western blot analysis of EIF3A expression in HepG2 (A), Jurkat (B), mouse heart (C), mouse ovary (D) whole cell lysates. (Predicted band size: 162; 166 kD; Observed band size: 180 kD)



Immunofluorescent analysis of EIF3A staining in U2OS cells. Formalin-fixed cells were permeabilized with 0.1% Triton X-100 in TBS for 5-10 minutes and blocked with 3% BSA-PBS for 30 minutes at room temperature. Cells were probed with the primary antibody in 3% BSA-PBS and incubated overnight at 4 °C in a humidified chamber. Cells were washed with PBST and incubated with a AREX® Fluor 488 -conjugated secondary antibody (green) in PBS at room temperature in the dark. DAPI was used to stain the cell nuclei (blue).

STORAGE

Store at 4°C short term. For long term storage, store at -20°C, avoiding freeze/thaw cycles.

NOTE

For Research Use Only. Not for diagnostic, therapeutics, prophylactic or in vivo use.