

DATASHEET

EIF6 Rabbit Polyclonal Antibody

CAT. NO. APA13428

KEY FEATURES

Target	EIF6	Source / Host	Rabbit
Reactivity	Human, Mouse, Rat	Clonality	Polyclonal
Applications	WB, IF/ICC	Conjugation	Unconjugated
Form / Buffer	Liquid in 0.42% Potassium phosphate, 0.87% Sodium chloride, pH 7.3, 30% glycerol, and 0.01% sodium azide.		Storage at -20°C

BACKGROUND

Binds to the 60S ribosomal subunit and prevents its association with the 40S ribosomal subunit to form the 80S initiation complex in the cytoplasm. Behaves as a stimulatory translation initiation factor downstream insulin/growth factors. Is also involved in ribosome biogenesis. Associates with pre-60S subunits in the nucleus and is involved in its nuclear export. Cytoplasmic release of TIF6 from 60S subunits and nuclear relocalization is promoted by a RACK1 (RACK1)-dependent protein kinase C activity. In tissues responsive to insulin, controls fatty acid synthesis and glycolysis by exerting translational control of adipogenic transcription factors such as CEBPB, CEBPD and ATF4 that have G/C rich or uORF in their 5'UTR.

APPLICATION

To ensure optimal assay performance, AREX recommends conducting reagent titration tailored to each testing system for optimal detection results.

WB	1:500 - 1:2000
IF/ICC	1:50 - 1:200

*Results are sample-specific. Please refer to your local assay conditions and test parameters for reference.

PRODUCT OVERVIEW

Description	Rabbit polyclonal antibody to EIF6
Specificity	Recognizes endogenous levels of EIF6 protein.
Antibody Type	Primary antibody
Immunogen	Recombinant fusion protein of human EIF6
Purification	The antibody was purified by immunogen affinity chromatography.
Molecular Weight	Predicted: 23; Observed: 27 kD
Form/Buffer	Liquid in 0.42% Potassium phosphate, 0.87% Sodium chloride, pH 7.3, 30% glycerol, and 0.01% sodium azide.
Alternative Names	EIF3A; ITGB4BP; Eukaryotic translation initiation factor 6; eIF-6; B(2)GCN homolog; B4 integrin interactor; CAB; p27(BBP)
Gene Symbol	EIF6
Entrez Gene	3692(Human); 16418(Mouse); 305506(Rat)
SwissProt	P56537(Human); O55135(Mouse); Q3KRD8(Rat)

*AREX continuously optimizes our products. Webpage content may not reflect the latest updates. For inquiries, please contact info@arexbio.com or your local distributor.

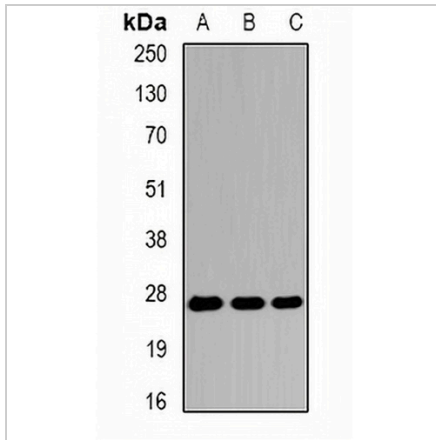
*Clone Number, Reactivity, Source/Host and Clonality can be found in the product name and Key Features section above.

DATASHEET

EIF6 Rabbit Polyclonal Antibody

CAT. NO. APA13428

DATA



Western blot analysis of EIF6 expression in HeLa (A), HepG2 (B), K562 (C) whole cell lysates. (Predicted band size: 23; 26 kD; Observed band size: 27 kD)



Immunofluorescent analysis of EIF6 staining in HeLa cells. Formalin-fixed cells were permeabilized with 0.1% Triton X-100 in TBS for 5-10 minutes and blocked with 3% BSA-PBS for 30 minutes at room temperature. Cells were probed with the primary antibody in 3% BSA-PBS and incubated overnight at 4 °C in a humidified chamber. Cells were washed with PBST and incubated with a DyLight 594-conjugated secondary antibody (red) in PBS at room temperature in the dark.

STORAGE

Store at 4°C short term. For long term storage, store at -20°C, avoiding freeze/thaw cycles.

NOTE

For Research Use Only. Not for diagnostic, therapeutics, prophylactic or in vivo use.