

DATASHEET

Autotaxin Rabbit Polyclonal Antibody

CAT. NO. APA13429

KEY FEATURES

Target	Autotaxin	Source / Host	Rabbit
Reactivity	Human, Mouse, Rat	Clonality	Polyclonal
Applications	WB	Conjugation	Unconjugated
Form / Buffer	Liquid in 0.42% Potassium phosphate, 0.87% Sodium chloride, pH 7.3, 30% glycerol, and 0.01% sodium azide.		Storage at-20°C

BACKGROUND

Secreted lysophospholipase D that hydrolyzes lysophospholipids to produce the signaling molecule lysophosphatidic acid (LPA) in extracellular fluids in extracellular fluids . Its major substrate is lysophosphatidylcholine . Can also act on sphingosylphosphorylcholine producing sphingosine-1-phosphate, a modulator of cell motility . Can hydrolyze, in vitro, bis-pNPP, to some extent pNP-TMP, and barely ATP . Involved in several motility-related processes such as angiogenesis and neurite outgrowth. Acts as an angiogenic factor by stimulating migration of smooth muscle cells and microtubule formation . Stimulates migration of melanoma cells, probably via a pertussis toxin-sensitive G protein . May have a role in induction of parturition .

APPLICATION

To ensure optimal assay performance, AREX recommends conducting reagent titration tailored to each testing system for optimal detection results.

WB	1:500 - 1:2000
----	----------------

*Results are sample-specific. Please refer to your local assay conditions and test parameters for reference.

PRODUCT OVERVIEW

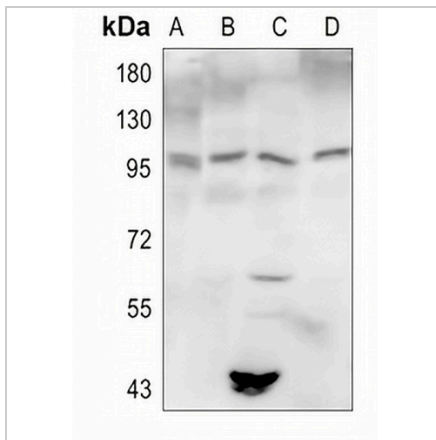
Description	Rabbit polyclonal antibody to Autotaxin
Specificity	Recognizes endogenous levels of Autotaxin protein.
Antibody Type	Primary antibody
Immunogen	Recombinant fusion protein of human Autotaxin
Purification	The antibody was purified by immunogen affinity chromatography.
Molecular Weight	Predicted: 98; Observed: 98 kD
Form/Buffer	Liquid in 0.42% Potassium phosphate, 0.87% Sodium chloride, pH 7.3, 30% glycerol, and 0.01% sodium azide.
Alternative Names	ATX; PDNP2; Ectonucleotide pyrophosphatase/phosphodiesterase family member 2; E-NPP 2; Autotaxin; Extracellular lysophospholipase D; LysoPLD
Gene Symbol	ENPP2
Entrez Gene	5168(Human); 18606(Mouse)
SwissProt	Q13822(Human); Q9R1E6(Mouse)

*AREX continuously optimizes our products. Webpage content may not reflect the latest updates. For inquiries, please contact info@arexbio.com or your local distributor.

*Clone Number, Reactivity, Source/Host and Clonality can be found in the product name and Key Features section above.

DATASHEET**Autotaxin Rabbit Polyclonal Antibody**

CAT. NO. APA13429

DATA

Western blot analysis of Autotaxin expression in SGC7901 (A), mouse lung (B), mouse kidney (C), rat lung (D) whole cell lysates. (Predicted band size: 98; 101; 105 kD; Observed band size: 98 kD)

STORAGE

Store at 4°C short term. For long term storage, store at -20°C, avoiding freeze/thaw cycles.

NOTE

For Research Use Only. Not for diagnostic, therapeutics, prophylactic or in vivo use.