

DATASHEET

Ficolin 1 Rabbit Polyclonal Antibody

CAT. NO. APA13437

KEY FEATURES

Target	Ficolin 1	Source / Host	Rabbit
Reactivity	Human, Mouse, Rat	Clonality	Polyclonal
Applications	WB, IHC	Conjugation	Unconjugated
Form / Buffer	Liquid in 0.42% Potassium phosphate, 0.87% Sodium chloride, pH 7.3, 30% glycerol, and 0.01% sodium azide.	Storage	at-20°C

BACKGROUND

Extracellular lectin, which acts as a pattern recognition receptor that initiates the lectin pathway of the complement system, a cascade of proteins that leads to phagocytosis and breakdown of pathogens and signaling that strengthens the adaptive immune system . Specifically recognizes and binds carbohydrates on the pathogen surface, activating the MASP1 serine protease and initiating the proteolytic cascade of the lectin complement pathway . Binds preferentially to 9-O-acetylated 2-6-linked sialic acid derivatives and to various glycans containing sialic acid engaged in a 2-3 linkage . May also activate monocytes through a G protein-coupled receptor, FFAR2, inducing the secretion of interleukin-8/IL-8 .

APPLICATION

To ensure optimal assay performance, AREX recommends conducting reagent titration tailored to each testing system for optimal detection results.

WB	1:500 - 1:2000
IHC	1:50 - 1:200

*Results are sample-specific. Please refer to your local assay conditions and test parameters for reference.

PRODUCT OVERVIEW

Description	Rabbit polyclonal antibody to Ficolin 1
Specificity	Recognizes endogenous levels of Ficolin 1 protein.
Antibody Type	Primary antibody
Immunogen	Recombinant fusion protein of human Ficolin 1
Purification	The antibody was purified by immunogen affinity chromatography.
Molecular Weight	Predicted: 35 kD; Observed: 38 kD
Form/Buffer	Liquid in 0.42% Potassium phosphate, 0.87% Sodium chloride, pH 7.3, 30% glycerol, and 0.01% sodium azide.
Alternative Names	FCNM; Ficolin-1; Collagen/fibrinogen domain-containing protein 1; Ficolin-A; Ficolin-alpha; M-ficolin
Gene Symbol	FCN1
Entrez Gene	2219(Human); 14133(Mouse)
SwissProt	O00602(Human); O70165(Mouse); Q9WTS8(Rat)

*AREX continuously optimizes our products. Webpage content may not reflect the latest updates. For inquiries, please contact info@arexbio.com or your local distributor.

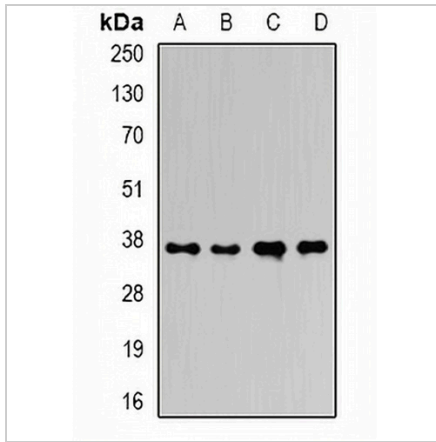
*Clone Number, Reactivity, Source/Host and Clonality can be found in the product name and Key Features section above.

DATASHEET

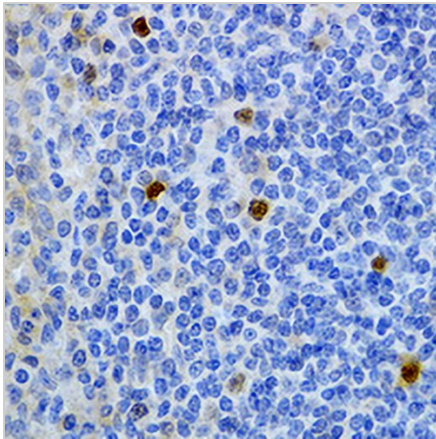
Ficolin 1 Rabbit Polyclonal Antibody

CAT. NO. APA13437

DATA



Western blot analysis of Ficolin 1 expression in HepG2 (A), mouse liver (B), mouse heart (C), rat liver (D) whole cell lysates. (Predicted band size: 35 kD; Observed band size: 38 kD)



Immunohistochemical analysis of Ficolin 1 staining in human tonsil formalin fixed paraffin embedded tissue section. The section was pre-treated using heat mediated antigen retrieval with sodium citrate buffer (pH 6.0). The section was then incubated with the antibody at room temperature and detected using an HRP conjugated compact polymer system. DAB was used as the chromogen. The section was then counterstained with haematoxylin and mounted with DPX.

STORAGE

Store at 4°C short term. For long term storage, store at -20°C, avoiding freeze/thaw cycles.

NOTE

For Research Use Only. Not for diagnostic, therapeutics, prophylactic or in vivo use.