

DATASHEET

Fibrinogen gamma Rabbit Polyclonal Antibody

CAT. NO. APA13440

KEY FEATURES

Target	Fibrinogen gamma	Source / Host	Rabbit
Reactivity	Human, Mouse	Clonality	Polyclonal
Applications	WB	Conjugation	Unconjugated
Form / Buffer	Liquid in 0.42% Potassium phosphate, 0.87% Sodium chloride, pH 7.3, 30% glycerol, and 0.01% sodium azide.		Storage at -20°C

BACKGROUND

Together with fibrinogen alpha (FGA) and fibrinogen beta (FGB), polymerizes to form an insoluble fibrin matrix. Has a major function in hemostasis as one of the primary components of blood clots. In addition, functions during the early stages of wound repair to stabilize the lesion and guide cell migration during re-epithelialization. Was originally thought to be essential for platelet aggregation, based on in vitro studies using anticoagulated blood. However, subsequent studies have shown that it is not absolutely required for thrombus formation in vivo. Enhances expression of SELP in activated platelets via an ITGB3-dependent pathway. Maternal fibrinogen is essential for successful pregnancy.

APPLICATION

To ensure optimal assay performance, AREX recommends conducting reagent titration tailored to each testing system for optimal detection results.

WB	1:500 - 1:1000
----	----------------

*Results are sample-specific. Please refer to your local assay conditions and test parameters for reference.

PRODUCT OVERVIEW

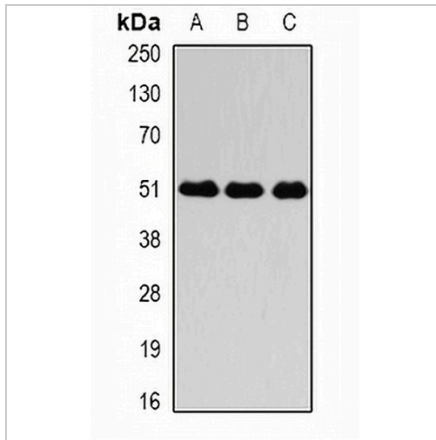
Description	Rabbit polyclonal antibody to Fibrinogen gamma
Specificity	Recognizes endogenous levels of Fibrinogen gamma protein.
Antibody Type	Primary antibody
Immunogen	Recombinant fusion protein of human Fibrinogen gamma
Purification	The antibody was purified by immunogen affinity chromatography.
Molecular Weight	Predicted: 49; Observed: 52 kD
Form/Buffer	Liquid in 0.42% Potassium phosphate, 0.87% Sodium chloride, pH 7.3, 30% glycerol, and 0.01% sodium azide.
Alternative Names	Fibrinogen gamma chain
Gene Symbol	FGG
Entrez Gene	2266(Human); 99571(Mouse)
SwissProt	P02679(Human); Q8VCM7(Mouse)

*AREX continuously optimizes our products. Webpage content may not reflect the latest updates. For inquiries, please contact info@arexbio.com or your local distributor.

*Clone Number, Reactivity, Source/Host and Clonality can be found in the product name and Key Features section above.

DATASHEET**Fibrinogen gamma Rabbit Polyclonal Antibody**

CAT. NO. APA13440

DATA

Western blot analysis of Fibrinogen gamma expression in SGC996 (A), mouse liver (B), mouse lung (C) whole cell lysates. (Predicted band size: 49; 51 kD; Observed band size: 52 kD)

STORAGE

Store at 4°C short term. For long term storage, store at -20°C, avoiding freeze/thaw cycles.

NOTE

For Research Use Only. Not for diagnostic, therapeutics, prophylactic or in vivo use.