

DATASHEET

FKBP2 Rabbit Polyclonal Antibody

CAT. NO. APA13441

KEY FEATURES

Target	FKBP2	Source / Host	Rabbit
Reactivity	Human, Mouse, Rat	Clonality	Polyclonal
Applications	WB, IF/ICC	Conjugation	Unconjugated
Form / Buffer	Liquid in 0.42% Potassium phosphate, 0.87% Sodium chloride, pH 7.3, 30% glycerol, and 0.01% sodium azide.		Storage at -20°C

BACKGROUND

PPIases accelerate the folding of proteins. It catalyzes the cis-trans isomerization of proline imidic peptide bonds in oligopeptides.

APPLICATION

To ensure optimal assay performance, AREX recommends conducting reagent titration tailored to each testing system for optimal detection results.

WB	1:500 - 1:2000
IF/ICC	1:50 - 1:200

*Results are sample-specific. Please refer to your local assay conditions and test parameters for reference.

PRODUCT OVERVIEW

Description	Rabbit polyclonal antibody to FKBP2
Specificity	Recognizes endogenous levels of FKBP2 protein.
Antibody Type	Primary antibody
Immunogen	Recombinant fusion protein of human FKBP2
Purification	The antibody was purified by immunogen affinity chromatography.
Molecular Weight	Predicted: 15 kD; Observed: 14 kD
Form/Buffer	Liquid in 0.42% Potassium phosphate, 0.87% Sodium chloride, pH 7.3, 30% glycerol, and 0.01% sodium azide.
Alternative Names	FKBP13; Peptidyl-prolyl cis-trans isomerase FKBP2; PPIase FKBP2; 13 kDa FK506-binding protein; 13 kDa FKBP; FKBP-13; FK506-binding protein 2; FKBP-2; Immunophilin FKBP13; Rotamase
Gene Symbol	FKBP2
Entrez Gene	2286(Human); 14227(Mouse)
SwissProt	P26885(Human); P45878(Mouse)

*AREX continuously optimizes our products. Webpage content may not reflect the latest updates. For inquiries, please contact info@arexbio.com or your local distributor.

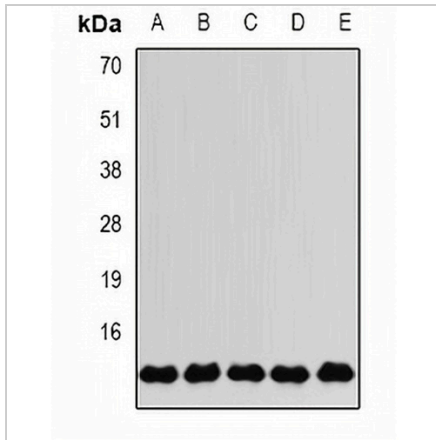
*Clone Number, Reactivity, Source/Host and Clonality can be found in the product name and Key Features section above.

DATASHEET

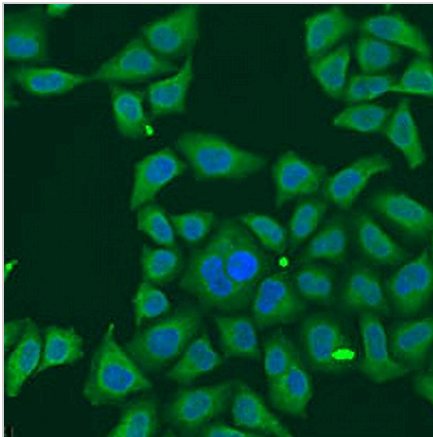
FKBP2 Rabbit Polyclonal Antibody

CAT. NO. APA13441

DATA



Western blot analysis of FKBP2 expression in MCF7 (A), SKOV3 (B), Jurkat (C), mouse liver (D), mouse brain (E) whole cell lysates. (Predicted band size: 15 kD; Observed band size: 14 kD)



Immunofluorescent analysis of FKBP2 staining in U2OS cells. Formalin-fixed cells were permeabilized with 0.1% Triton X-100 in TBS for 5-10 minutes and blocked with 3% BSA-PBS for 30 minutes at room temperature. Cells were probed with the primary antibody in 3% BSA-PBS and incubated overnight at 4 °C in a humidified chamber. Cells were washed with PBST and incubated with a AREX® Fluor 488 -conjugated secondary antibody (green) in PBS at room temperature in the dark. DAPI was used to stain the cell nuclei (blue).

STORAGE

Store at 4°C short term. For long term storage, store at -20°C, avoiding freeze/thaw cycles.

NOTE

For Research Use Only. Not for diagnostic, therapeutics, prophylactic or in vivo use.