

DATASHEET

FKBP8 Rabbit Polyclonal Antibody

CAT. NO. APA13444

KEY FEATURES

Target	FKBP8	Source / Host	Rabbit
Reactivity	Human, Mouse, Rat	Clonality	Polyclonal
Applications	WB, IF/ICC	Conjugation	Unconjugated
Form / Buffer	Liquid in 0.42% Potassium phosphate, 0.87% Sodium chloride, pH 7.3, 30% glycerol, and 0.01% sodium azide.		Storage at -20°C

BACKGROUND

Constitutively inactive PPIase, which becomes active when bound to calmodulin and calcium. Seems to act as a chaperone for BCL2, targets it to the mitochondria and modulates its phosphorylation state. The BCL2/FKBP8/calmodulin/calcium complex probably interferes with the binding of BCL2 to its targets. The active form of FKBP8 may therefore play a role in the regulation of apoptosis. Involved in the inhibition of viral infection by influenza A viruses (IAV).

APPLICATION

To ensure optimal assay performance, AREX recommends conducting reagent titration tailored to each testing system for optimal detection results.

WB	1:500 - 1:2000
IF/ICC	1:50 - 1:100

*Results are sample-specific. Please refer to your local assay conditions and test parameters for reference.

PRODUCT OVERVIEW

Description	Rabbit polyclonal antibody to FKBP8
Specificity	Recognizes endogenous levels of FKBP8 protein.
Antibody Type	Primary antibody
Immunogen	Recombinant fusion protein of human FKBP8
Purification	The antibody was purified by immunogen affinity chromatography.
Molecular Weight	Predicted: 27; Observed: 55 kD
Form/Buffer	Liquid in 0.42% Potassium phosphate, 0.87% Sodium chloride, pH 7.3, 30% glycerol, and 0.01% sodium azide.
Alternative Names	FKBP38; Peptidyl-prolyl cis-trans isomerase FKBP8; PPIase FKBP8; 38 kDa FK506-binding protein; 38 kDa FKBP; FKBP-38; hFKBP38; FK506-binding protein 8; FKBP-8; FKBP38; Rotamase
Gene Symbol	FKBP8
Entrez Gene	23770(Human); 14232(Mouse); 290652(Rat)
SwissProt	Q14318(Human); O35465(Mouse); Q3B7U9(Rat)

*AREX continuously optimizes our products. Webpage content may not reflect the latest updates. For inquiries, please contact info@arex.bio or your local distributor.

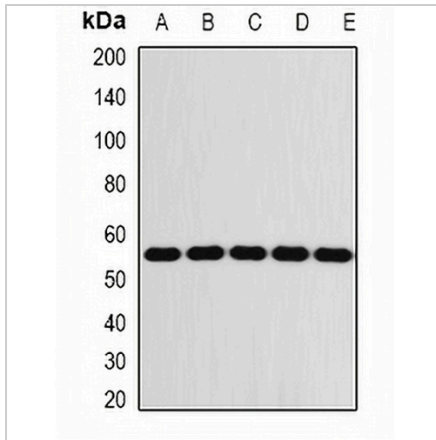
*Clone Number, Reactivity, Source/Host and Clonality can be found in the product name and Key Features section above.

DATASHEET

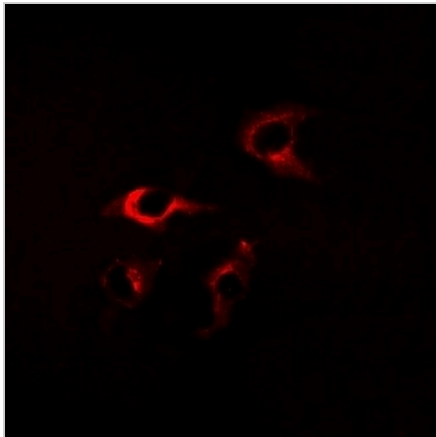
FKBP8 Rabbit Polyclonal Antibody

CAT. NO. APA13444

DATA



Western blot analysis of FKBP8 expression in Jurkat (A), THP1 (B), mouse liver (C), mouse eye (D), rat brain (E) whole cell lysates. (Predicted band size: 27; 44 kD; Observed band size: 55 kD)



Immunofluorescent analysis of FKBP8 staining in A549 cells. Formalin-fixed cells were permeabilized with 0.1% Triton X-100 in TBS for 5-10 minutes and blocked with 3% BSA-PBS for 30 minutes at room temperature. Cells were probed with the primary antibody in 3% BSA-PBS and incubated overnight at 4 °C in a humidified chamber. Cells were washed with PBST and incubated with a DyLight 594-conjugated secondary antibody (red) in PBS at room temperature in the dark.

STORAGE

Store at 4°C short term. For long term storage, store at -20°C, avoiding freeze/thaw cycles.

NOTE

For Research Use Only. Not for diagnostic, therapeutics, prophylactic or in vivo use.