

**DATASHEET**

**FURIN Rabbit Polyclonal Antibody**

CAT. NO. APA13449

**KEY FEATURES**

Target	FURIN	Source / Host	Rabbit
Reactivity	Human, Mouse, Rat	Clonality	Polyclonal
Applications	WB, IHC, IF/ICC	Conjugation	Unconjugated
Form / Buffer	Liquid in 0.42% Potassium phosphate, 0.87% Sodium chloride, pH 7.3, 30% glycerol, and 0.01% sodium azide.		Storage at -20°C

**BACKGROUND**

Ubiquitous endoprotease within constitutive secretory pathways capable of cleavage at the RX(K/R)R consensus motif R consensus motif . Mediates processing of TGFB1, an essential step in TGF-beta-1 activation . Converts through proteolytic cleavage the non-functional Brain natriuretic factor prohormone into its active hormone BNP(1-32) . By mediating processing of accessory subunit ATP6AP1/Ac45 of the V-ATPase, regulates the acidification of dense-core secretory granules in islets of Langerhans cells .

**APPLICATION**

To ensure optimal assay performance, AREX recommends conducting reagent titration tailored to each testing system for optimal detection results.

WB	1:500 - 1:2000
IHC	1:50 - 1:200
IF/ICC	1:50 - 1:200

\*Results are sample-specific. Please refer to your local assay conditions and test parameters for reference.

**PRODUCT OVERVIEW**

Description	Rabbit polyclonal antibody to FURIN
Specificity	Recognizes endogenous levels of FURIN protein.
Antibody Type	Primary antibody
Immunogen	Recombinant fusion protein of human FURIN
Purification	The antibody was purified by immunogen affinity chromatography.
Molecular Weight	Predicted: 86 kD; Observed: 90 kD
Form/Buffer	Liquid in 0.42% Potassium phosphate, 0.87% Sodium chloride, pH 7.3, 30% glycerol, and 0.01% sodium azide.
Alternative Names	FUR; PACE; PCSK3; Furin; Dibasic-processing enzyme; Paired basic amino acid residue-cleaving enzyme; PACE
Gene Symbol	FURIN
Entrez Gene	5045(Human); 18550(Mouse); 54281(Rat)
SwissProt	P09958(Human); P23188(Mouse); P23377(Rat)

\*AREX continuously optimizes our products. Webpage content may not reflect the latest updates. For inquiries, please contact [info@arexbio.com](mailto:info@arexbio.com) or your local distributor.

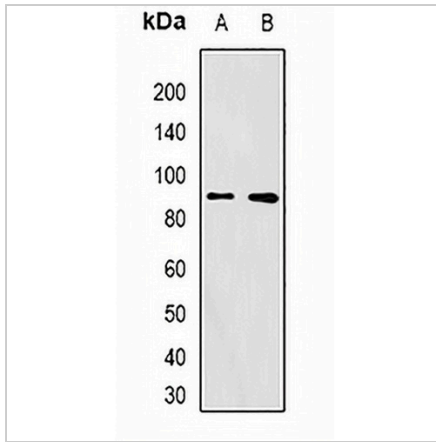
\*Clone Number, Reactivity, Source/Host and Clonality can be found in the product name and Key Features section above.

**DATASHEET**

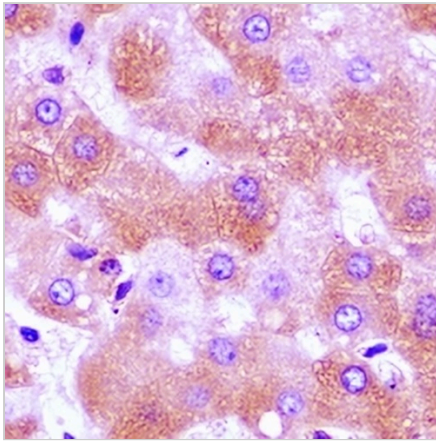
**FURIN Rabbit Polyclonal Antibody**

CAT. NO. APA13449

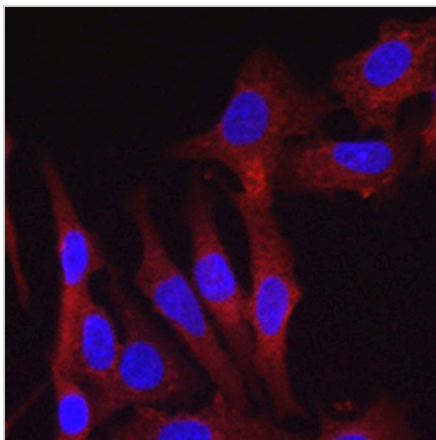
**DATA**



Western blot analysis of FURIN expression in A375 (A), mouse ovary (B) whole cell lysates. (Predicted band size: 86 kD; Observed band size: 90 kD)



Immunohistochemical analysis of FURIN staining in human liver cancer formalin fixed paraffin embedded tissue section. The section was pre-treated using heat mediated antigen retrieval with sodium citrate buffer (pH 6.0). The section was then incubated with the antibody at room temperature and detected using an HRP conjugated compact polymer system. DAB was used as the chromogen. The section was then counterstained with haematoxylin and mounted with DPX.



Immunofluorescent analysis of FURIN staining in A549 cells. Formalin-fixed cells were permeabilized with 0.1% Triton X-100 in TBS for 5-10 minutes and blocked with 3% BSA-PBS for 30 minutes at room temperature. Cells were probed with the primary antibody in 3% BSA-PBS and incubated overnight at 4 °C in a humidified chamber. Cells were washed with PBST and incubated with a AREX® Fluor 594-conjugated secondary antibody (red) in PBS at room temperature in the dark. DAPI was used to stain the cell nuclei (blue).

**STORAGE**

Store at 4°C short term. For long term storage, store at -20°C, avoiding freeze/thaw cycles.

**NOTE**

For Research Use Only. Not for diagnostic, therapeutics, prophylactic or in vivo use.