

**DATASHEET**

**GFER Rabbit Polyclonal Antibody**

CAT. NO. APA13454

**KEY FEATURES**

Target	GFER	Source / Host	Rabbit
Reactivity	Human, Mouse, Rat	Clonality	Polyclonal
Applications	WB	Conjugation	Unconjugated
Form / Buffer	Liquid in 0.42% Potassium phosphate, 0.87% Sodium chloride, pH 7.3, 30% glycerol, and 0.01% sodium azide.		Storage at -20°C

**BACKGROUND**

FAD-dependent sulphhydryl oxidase that regenerates the redox-active disulfide bonds in CHCHD4/MIA40, a chaperone essential for disulfide bond formation and protein folding in the mitochondrial intermembrane space. The reduced form of CHCHD4/MIA40 forms a transient intermolecular disulfide bridge with GFER/ERV1, resulting in regeneration of the essential disulfide bonds in CHCHD4/MIA40, while GFER/ERV1 becomes re-oxidized by donating electrons to cytochrome c or molecular oxygen.

**APPLICATION**

To ensure optimal assay performance, AREX recommends conducting reagent titration tailored to each testing system for optimal detection results.

WB	1:500 - 1:1000
----	----------------

\*Results are sample-specific. Please refer to your local assay conditions and test parameters for reference.

**PRODUCT OVERVIEW**

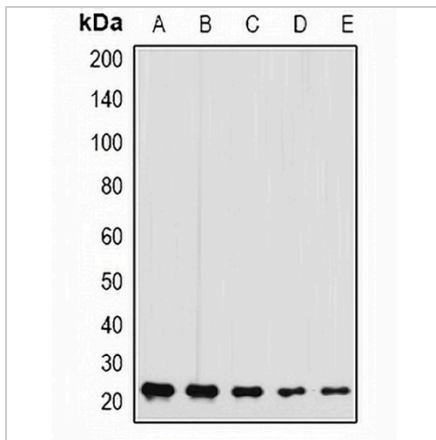
Description	Rabbit polyclonal antibody to GFER
Specificity	Recognizes endogenous levels of GFER protein.
Antibody Type	Primary antibody
Immunogen	Recombinant fusion protein of human GFER
Purification	The antibody was purified by immunogen affinity chromatography.
Molecular Weight	Predicted: 15; Observed: 23 kD
Form/Buffer	Liquid in 0.42% Potassium phosphate, 0.87% Sodium chloride, pH 7.3, 30% glycerol, and 0.01% sodium azide.
Alternative Names	ALR; HERV1; HPO; FAD-linked sulphhydryl oxidase ALR; Augmenter of liver regeneration; hERV1; Hepatopoietin
Gene Symbol	GFER
Entrez Gene	2671(Human); 11692(Mouse); 27100(Rat)
SwissProt	P55789(Human); P56213(Mouse); Q63042(Rat)

\*AREX continuously optimizes our products. Webpage content may not reflect the latest updates. For inquiries, please contact [info@arexbio.com](mailto:info@arexbio.com) or your local distributor.

\*Clone Number, Reactivity, Source/Host and Clonality can be found in the product name and Key Features section above.

**DATASHEET****GFER Rabbit Polyclonal Antibody**

CAT. NO. APA13454

**DATA**

Western blot analysis of GFER expression in MCF7 (A), A375 (B), mouse liver (C), mouse testis (D), rat brain (E) whole cell lysates. (Predicted band size: 15; 23 kD; Observed band size: 23 kD)

**STORAGE**

Store at 4°C short term. For long term storage, store at -20°C, avoiding freeze/thaw cycles.

**NOTE**

For Research Use Only. Not for diagnostic, therapeutics, prophylactic or in vivo use.