

**DATASHEET**

**GFRA1 Rabbit Polyclonal Antibody**

CAT. NO. APA13455

**KEY FEATURES**

Target	GFRA1	Source / Host	Rabbit
Reactivity	Human, Mouse, Rat	Clonality	Polyclonal
Applications	WB, IHC, IF/ICC	Conjugation	Unconjugated
Form / Buffer	Liquid in 0.42% Potassium phosphate, 0.87% Sodium chloride, pH 7.3, 30% glycerol, and 0.01% sodium azide.		Storage at -20°C

**BACKGROUND**

Coreceptor for GDNF, a neurotrophic factor that enhances survival and morphological differentiation of dopaminergic neurons and increases their high-affinity dopamine uptake . GDNF-binding leads to autophosphorylation and activation of the RET receptor .

**APPLICATION**

To ensure optimal assay performance, AREX recommends conducting reagent titration tailored to each testing system for optimal detection results.

WB	1:500 - 1:2000
IHC	1:50 - 1:200
IF/ICC	1:50 - 1:200

\*Results are sample-specific. Please refer to your local assay conditions and test parameters for reference.

**PRODUCT OVERVIEW**

Description	Rabbit polyclonal antibody to GFRA1
Specificity	Recognizes endogenous levels of GFRA1 protein.
Antibody Type	Primary antibody
Immunogen	Recombinant fusion protein of human GFRA1
Purification	The antibody was purified by immunogen affinity chromatography.
Molecular Weight	Predicted: 50; Observed: 55 kD
Form/Buffer	Liquid in 0.42% Potassium phosphate, 0.87% Sodium chloride, pH 7.3, 30% glycerol, and 0.01% sodium azide.
Alternative Names	GDNFRA; RETL1; TRNR1; GDNF family receptor alpha-1; GDNF receptor alpha-1; GDNFR-alpha-1; GFR-alpha-1; RET ligand 1; TGF-beta-related neurotrophic factor receptor 1
Gene Symbol	GFRA1
Entrez Gene	2674(Human); 14585(Mouse); 25454(Rat)
SwissProt	P56159(Human); P97785(Mouse); Q62997(Rat)

\*AREX continuously optimizes our products. Webpage content may not reflect the latest updates. For inquiries, please contact [info@arexbio.com](mailto:info@arexbio.com) or your local distributor.

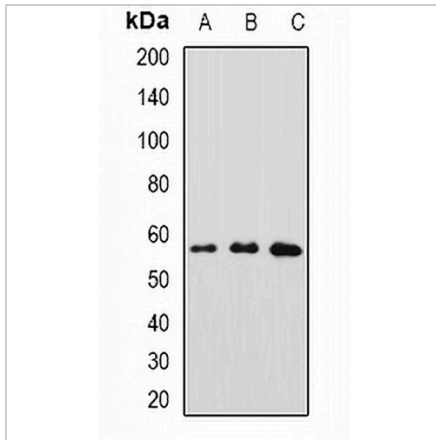
\*Clone Number, Reactivity, Source/Host and Clonality can be found in the product name and Key Features section above.

**DATASHEET**

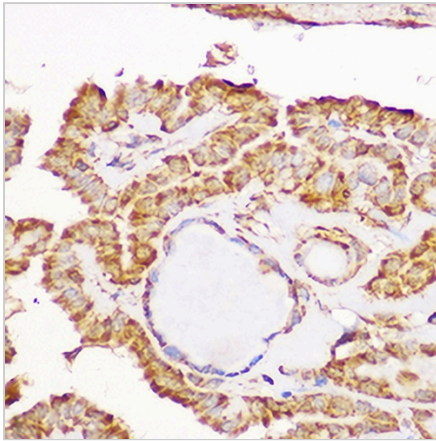
**GFRA1 Rabbit Polyclonal Antibody**

CAT. NO. APA13455

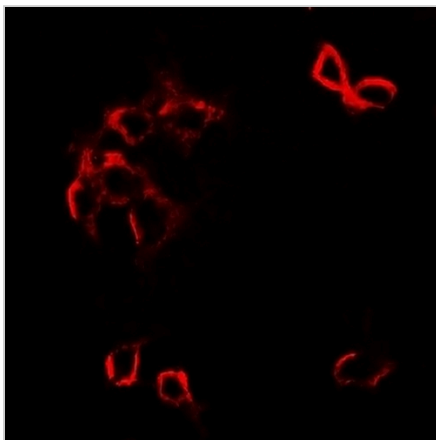
**DATA**



Western blot analysis of GFRA1 expression in MCF7 (A), A549 (B), SW480 (C) whole cell lysates. (Predicted band size: 50; 51 kD; Observed band size: 55 kD)



Immunohistochemical analysis of GFRA1 staining in human thyroid cancer formalin fixed paraffin embedded tissue section. The section was pre-treated using heat mediated antigen retrieval with sodium citrate buffer (pH 6.0). The section was then incubated with the antibody at room temperature and detected using an HRP conjugated compact polymer system. DAB was used as the chromogen. The section was then counterstained with haematoxylin and mounted with DPX.



Immunofluorescent analysis of GFRA1 staining in SW480 cells. Formalin-fixed cells were permeabilized with 0.1% Triton X-100 in TBS for 5-10 minutes and blocked with 3% BSA-PBS for 30 minutes at room temperature. Cells were probed with the primary antibody in 3% BSA-PBS and incubated overnight at 4 °C in a humidified chamber. Cells were washed with PBST and incubated with a DyLight 594-conjugated secondary antibody (red) in PBS at room temperature in the dark.

**STORAGE**

Store at 4°C short term. For long term storage, store at -20°C, avoiding freeze/thaw cycles.

**NOTE**

For Research Use Only. Not for diagnostic, therapeutics, prophylactic or in vivo use.