

**DATASHEET**

**RACK1 Rabbit Polyclonal Antibody**

CAT. NO. APA13462

**KEY FEATURES**

Target	RACK1	Source / Host	Rabbit
Reactivity	Human, Mouse, Rat	Clonality	Polyclonal
Applications	WB	Conjugation	Unconjugated
Form / Buffer	Liquid in 0.42% Potassium phosphate, 0.87% Sodium chloride, pH 7.3, 30% glycerol, and 0.01% sodium azide.		Storage at -20°C

**BACKGROUND**

Scaffolding protein involved in the recruitment, assembly and/or regulation of a variety of signaling molecules. Interacts with a wide variety of proteins and plays a role in many cellular processes. Component of the 40S ribosomal subunit involved in translational repression. Involved in the initiation of the ribosome quality control (RQC), a pathway that takes place when a ribosome has stalled during translation, by promoting ubiquitination of a subset of 40S ribosomal subunits. Binds to and stabilizes activated protein kinase C (PKC), increasing PKC-mediated phosphorylation. May recruit activated PKC to the ribosome, leading to phosphorylation of EIF6. Inhibits the activity of SRC kinases including SRC, LCK and YES1.

**APPLICATION**

To ensure optimal assay performance, AREX recommends conducting reagent titration tailored to each testing system for optimal detection results.

WB	1:500 - 1:1000
----	----------------

\*Results are sample-specific. Please refer to your local assay conditions and test parameters for reference.

**PRODUCT OVERVIEW**

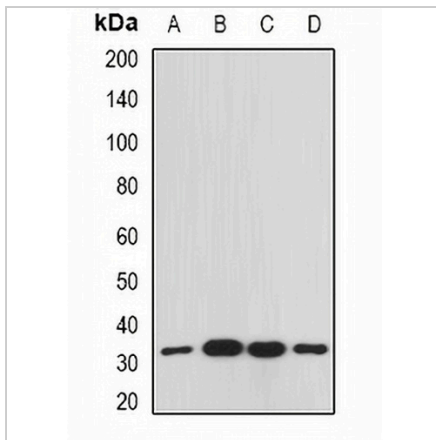
Description	Rabbit polyclonal antibody to RACK1
Specificity	Recognizes endogenous levels of RACK1 protein.
Antibody Type	Primary antibody
Immunogen	Recombinant fusion protein of human RACK1
Purification	The antibody was purified by immunogen affinity chromatography.
Molecular Weight	Predicted: 35 kD; Observed: 35 kD
Form/Buffer	Liquid in 0.42% Potassium phosphate, 0.87% Sodium chloride, pH 7.3, 30% glycerol, and 0.01% sodium azide.
Alternative Names	Guanine nucleotide-binding protein subunit beta-2-like 1; Cell proliferation-inducing gene 21 protein; Guanine nucleotide-binding protein subunit beta-like protein 12.3; Human lung cancer oncogene 7 protein; HLC-7; Receptor for activated C kinase; Receptor of activated protein kinase C 1; RACK1
Gene Symbol	GNB2L1
Entrez Gene	10399(Human); 14694(Mouse); 83427(Rat)
SwissProt	P63244(Human); P68040(Mouse); P63245(Rat)

\*AREX continuously optimizes our products. Webpage content may not reflect the latest updates. For inquiries, please contact [info@arexbio.com](mailto:info@arexbio.com) or your local distributor.

\*Clone Number, Reactivity, Source/Host and Clonality can be found in the product name and Key Features section above.

**DATASHEET****RACK1 Rabbit Polyclonal Antibody**

CAT. NO. APA13462

**DATA**

Western blot analysis of RACK1 expression in Raji (A), HeLa (B), mouse spleen (C), mouse liver (D) whole cell lysates. (Predicted band size: 35 kD; Observed band size: 35 kD)

**STORAGE**

Store at 4°C short term. For long term storage, store at -20°C, avoiding freeze/thaw cycles.

**NOTE**

For Research Use Only. Not for diagnostic, therapeutics, prophylactic or in vivo use.