

**DATASHEET**

**GLUR3 Rabbit Polyclonal Antibody**

CAT. NO. APA13468

**KEY FEATURES**

Target	GLUR3	Source / Host	Rabbit
Reactivity	Human, Mouse, Rat	Clonality	Polyclonal
Applications	WB, IF/ICC	Conjugation	Unconjugated
Form / Buffer	Liquid in 0.42% Potassium phosphate, 0.87% Sodium chloride, pH 7.3, 30% glycerol, and 0.01% sodium azide.		Storage at -20°C

**BACKGROUND**

Ionotropic glutamate receptor that functions as a ligand-gated cation channel, gated by L-glutamate and glutamatergic agonists such as alpha-amino-3-hydroxy-5-methyl-4-isoxazolepropionic acid (AMPA), quisqualic acid, and kainic acid . L-glutamate acts as an excitatory neurotransmitter at many synapses in the central nervous system and plays an important role in fast excitatory synaptic transmission by inducing long-term potentiation . Binding of the excitatory neurotransmitter L-glutamate induces a conformation change, leading to the opening of the cation channel, and thereby converts the chemical signal to an electrical impulse upon entry of calcium , quisqualic acid, and kainic acid .

**APPLICATION**

To ensure optimal assay performance, AREX recommends conducting reagent titration tailored to each testing system for optimal detection results.

WB	1:500 - 1:2000
IF/ICC	1:50 - 1:200

\*Results are sample-specific. Please refer to your local assay conditions and test parameters for reference.

**PRODUCT OVERVIEW**

Description	Rabbit polyclonal antibody to GLUR3
Specificity	Recognizes endogenous levels of GLUR3 protein.
Antibody Type	Primary antibody
Immunogen	Recombinant fusion protein of human GLUR3
Purification	The antibody was purified by immunogen affinity chromatography.
Molecular Weight	Predicted: 101 kD; Observed: 101 kD
Form/Buffer	Liquid in 0.42% Potassium phosphate, 0.87% Sodium chloride, pH 7.3, 30% glycerol, and 0.01% sodium azide.
Alternative Names	GLUR3; GLURC; Glutamate receptor 3; GluR-3; AMPA-selective glutamate receptor 3; GluR-C; GluR-K3; Glutamate receptor ionotropic, AMPA 3; GluA3
Gene Symbol	GRIA3
Entrez Gene	2892(Human); 53623(Mouse); 29628(Rat)
SwissProt	P42263(Human); Q9Z2W9(Mouse); P19492(Rat)

\*AREX continuously optimizes our products. Webpage content may not reflect the latest updates. For inquiries, please contact [info@arexbio.com](mailto:info@arexbio.com) or your local distributor.

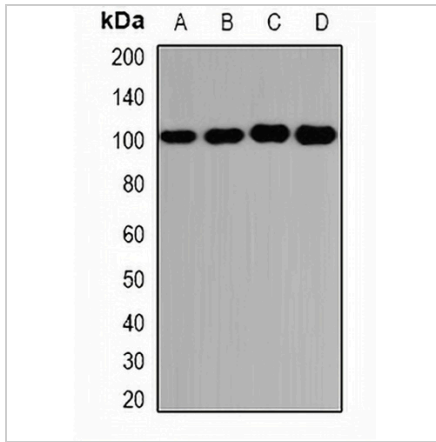
\*Clone Number, Reactivity, Source/Host and Clonality can be found in the product name and Key Features section above.

**DATASHEET**

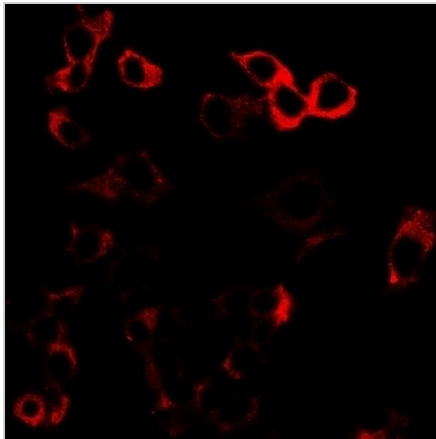
**GLUR3 Rabbit Polyclonal Antibody**

CAT. NO. APA13468

**DATA**



Western blot analysis of GLUR3 expression in U251 (A), PC3 (B), mouse brain (C), mouse lung (D) whole cell lysates. (Predicted band size: 101 kD; Observed band size: 101 kD)



Immunofluorescent analysis of GLUR3 staining in U2OS cells. Formalin-fixed cells were permeabilized with 0.1% Triton X-100 in TBS for 5-10 minutes and blocked with 3% BSA-PBS for 30 minutes at room temperature. Cells were probed with the primary antibody in 3% BSA-PBS and incubated overnight at 4 °C in a humidified chamber. Cells were washed with PBST and incubated with a DyLight 594-conjugated secondary antibody (red) in PBS at room temperature in the dark.

**STORAGE**

Store at 4°C short term. For long term storage, store at -20°C, avoiding freeze/thaw cycles.

**NOTE**

For Research Use Only. Not for diagnostic, therapeutics, prophylactic or in vivo use.