

DATASHEET

GLURD1 Rabbit Polyclonal Antibody

CAT. NO. APA13469

KEY FEATURES

Target	GLURD1	Source / Host	Rabbit
Reactivity	Human, Mouse, Rat	Clonality	Polyclonal
Applications	WB, IHC, IF/ICC	Conjugation	Unconjugated
Form / Buffer	Liquid in 0.42% Potassium phosphate, 0.87% Sodium chloride, pH 7.3, 30% glycerol, and 0.01% sodium azide.		Storage at -20°C

BACKGROUND

Member of the ionotropic glutamate receptor family, which plays a crucial role in synaptic organization and signal transduction in the central nervous system. Although it shares structural features with ionotropic glutamate receptors, does not bind glutamate as a primary ligand . Instead, forms trans-synaptic adhesion complexes with presynaptic neurexins and cerebellins, regulating NMDA and AMPA receptor activity and influencing synaptic plasticity through signal transduction . In the presence of neurexins and cerebellins, forms cation-selective channels that are proposed to be gated by glycine and D-serine . However, recent research disputes this ligand-gated cation channel activity . Cation-selective ion channel can be triggered by GRM1 in dopaminergic neurons .

APPLICATION

To ensure optimal assay performance, AREX recommends conducting reagent titration tailored to each testing system for optimal detection results.

WB	1:500 - 1:2000
IHC	1:50 - 1:200
IF/ICC	1:50 - 1:200

*Results are sample-specific. Please refer to your local assay conditions and test parameters for reference.

PRODUCT OVERVIEW

Description	Rabbit polyclonal antibody to GLURD1
Specificity	Recognizes endogenous levels of GLURD1 protein.
Antibody Type	Primary antibody
Immunogen	Recombinant fusion protein of human GLURD1
Purification	The antibody was purified by immunogen affinity chromatography.
Molecular Weight	Predicted: 63; Observed: 100 kD
Form/Buffer	Liquid in 0.42% Potassium phosphate, 0.87% Sodium chloride, pH 7.3, 30% glycerol, and 0.01% sodium azide.
Alternative Names	KIAA1220; Glutamate receptor ionotropic, delta-1; GluD1; GluR delta-1 subunit
Gene Symbol	GRID1
Entrez Gene	2894(Human); 14803(Mouse); 79219(Rat)
SwissProt	Q9ULK0(Human); Q61627(Mouse); Q62640(Rat)

*AREX continuously optimizes our products. Webpage content may not reflect the latest updates. For inquiries, please contact info@arexbio.com or your local distributor.

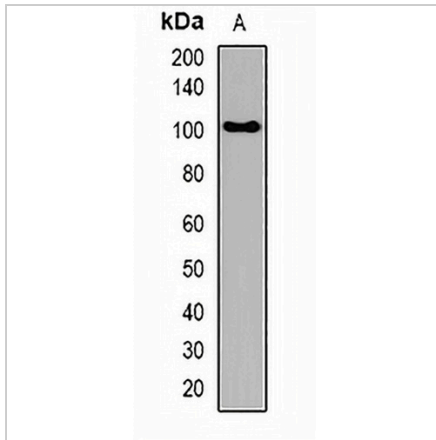
*Clone Number, Reactivity, Source/Host and Clonality can be found in the product name and Key Features section above.

DATASHEET

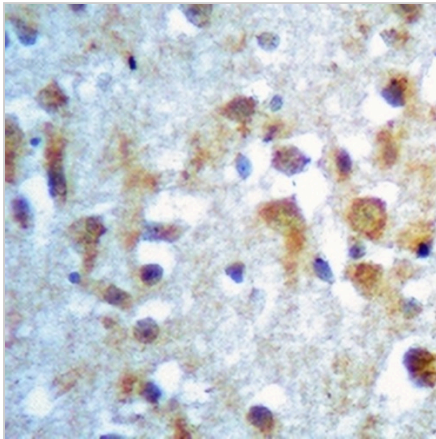
GLURD1 Rabbit Polyclonal Antibody

CAT. NO. APA13469

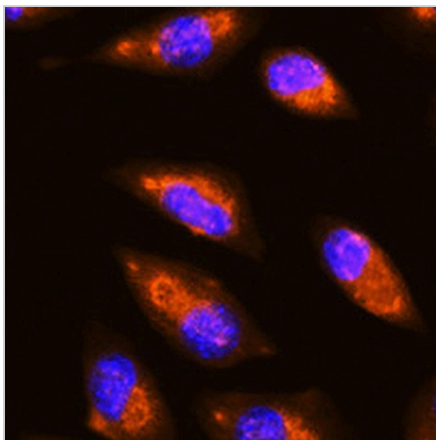
DATA



Western blot analysis of GLURD1 expression in HeLa (A) whole cell lysates. (Predicted band size: 63; 112 kD; Observed band size: 100 kD)



Immunohistochemical analysis of GLURD1 staining in human brain formalin fixed paraffin embedded tissue section. The section was pre-treated using heat mediated antigen retrieval with sodium citrate buffer (pH 6.0). The section was then incubated with the antibody at room temperature and detected using an HRP conjugated compact polymer system. DAB was used as the chromogen. The section was then counterstained with haematoxylin and mounted with DPX.



Immunofluorescent analysis of GLURD1 staining in L929 cells. Formalin-fixed cells were permeabilized with 0.1% Triton X-100 in TBS for 5-10 minutes and blocked with 3% BSA-PBS for 30 minutes at room temperature. Cells were probed with the primary antibody in 3% BSA-PBS and incubated overnight at 4 °C in a humidified chamber. Cells were washed with PBST and incubated with a AREX® Fluor 594-conjugated secondary antibody (red) in PBS at room temperature in the dark. DAPI was used to stain the cell nuclei (blue).

STORAGE

Store at 4°C short term. For long term storage, store at -20°C, avoiding freeze/thaw cycles.

NOTE

For Research Use Only. Not for diagnostic, therapeutics, prophylactic or in vivo use.