

DATASHEET

Gelsolin Rabbit Polyclonal Antibody

CAT. NO. APA13470

KEY FEATURES

Target	Gelsolin	Source / Host	Rabbit
Reactivity	Human, Mouse	Clonality	Polyclonal
Applications	WB, IF/ICC	Conjugation	Unconjugated
Form / Buffer	Liquid in 0.42% Potassium phosphate, 0.87% Sodium chloride, pH 7.3, 30% glycerol, and 0.01% sodium azide.		Storage at-20°C

BACKGROUND

Calcium-regulated, actin-modulating protein that binds to the plus (or barbed) ends of actin monomers or filaments, preventing monomer exchange (end-blocking or capping). It can promote the assembly of monomers into filaments (nucleation) as well as sever filaments already formed ends of actin monomers or filaments, preventing monomer exchange (end-blocking or capping). It can promote the assembly of monomers into filaments (nucleation) as well as sever filaments already formed . Plays a role in ciliogenesis .

APPLICATION

To ensure optimal assay performance, AREX recommends conducting reagent titration tailored to each testing system for optimal detection results.

WB	1:500 - 1:2000
IF/ICC	1:50 - 1:200

*Results are sample-specific. Please refer to your local assay conditions and test parameters for reference.

PRODUCT OVERVIEW

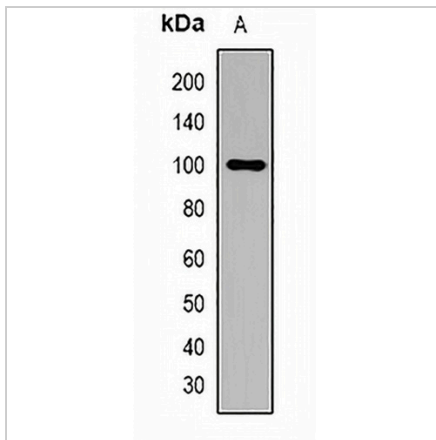
Description	Rabbit polyclonal antibody to Gelsolin
Specificity	Recognizes endogenous levels of Gelsolin protein.
Antibody Type	Primary antibody
Immunogen	Recombinant fusion protein of human Gelsolin
Purification	The antibody was purified by immunogen affinity chromatography.
Molecular Weight	Predicted: 80; Observed: 100 kD
Form/Buffer	Liquid in 0.42% Potassium phosphate, 0.87% Sodium chloride, pH 7.3, 30% glycerol, and 0.01% sodium azide.
Alternative Names	Gelsolin; AGEL; Actin-depolymerizing factor; ADF; Brevin
Gene Symbol	GSN
Entrez Gene	2934(Human); 227753(Mouse)
SwissProt	P06396(Human); P13020(Mouse)

*AREX continuously optimizes our products. Webpage content may not reflect the latest updates. For inquiries, please contact info@arexbio.com or your local distributor.

*Clone Number, Reactivity, Source/Host and Clonality can be found in the product name and Key Features section above.

DATASHEET**Gelsolin Rabbit Polyclonal Antibody**

CAT. NO. APA13470

DATA

Western blot analysis of Gelsolin expression in RAW264.7 (A) whole cell lysates. (Predicted band size: 80; 81; 85 kD; Observed band size: 100 kD)

STORAGE

Store at 4°C short term. For long term storage, store at -20°C, avoiding freeze/thaw cycles.

NOTE

For Research Use Only. Not for diagnostic, therapeutics, prophylactic or in vivo use.