

DATASHEET

Glutathione Synthetase Rabbit Polyclonal Antibody

CAT. NO. APA13471

KEY FEATURES

Target	Glutathione Synthetase	Source / Host	Rabbit
Reactivity	Human, Mouse, Rat	Clonality	Polyclonal
Applications	WB, IF/ICC	Conjugation	Unconjugated
Form / Buffer	Liquid in 0.42% Potassium phosphate, 0.87% Sodium chloride, pH 7.3, 30% glycerol, and 0.01% sodium azide.		Storage at -20°C

BACKGROUND

Catalyzes the production of glutathione from gamma-glutamylcysteine and glycine in an ATP-dependent manner. Glutathione (gamma-glutamylcysteinylglycine, GSH) is the most abundant intracellular thiol in living aerobic cells and is required for numerous processes including the protection of cells against oxidative damage, amino acid transport, the detoxification of foreign compounds, the maintenance of protein sulfhydryl groups in a reduced state and acts as a cofactor for a number of enzymes. Participates in ophthalmate biosynthesis in hepatocytes.

APPLICATION

To ensure optimal assay performance, AREX recommends conducting reagent titration tailored to each testing system for optimal detection results.

WB	1:500 - 1:1000
IF/ICC	1:50 - 1:200

*Results are sample-specific. Please refer to your local assay conditions and test parameters for reference.

PRODUCT OVERVIEW

Description	Rabbit polyclonal antibody to Glutathione Synthetase
Specificity	Recognizes endogenous levels of Glutathione Synthetase protein.
Antibody Type	Primary antibody
Immunogen	Recombinant fusion protein of human Glutathione Synthetase
Purification	The antibody was purified by immunogen affinity chromatography.
Molecular Weight	Predicted: 40; Observed: 52 kD
Form/Buffer	Liquid in 0.42% Potassium phosphate, 0.87% Sodium chloride, pH 7.3, 30% glycerol, and 0.01% sodium azide.
Alternative Names	Glutathione synthetase; GSH synthetase; GSH-S; Glutathione synthase
Gene Symbol	GSS
Entrez Gene	2937(Human); 14854(Mouse); 25458(Rat)
SwissProt	P48637(Human); P51855(Mouse); P46413(Rat)

*AREX continuously optimizes our products. Webpage content may not reflect the latest updates. For inquiries, please contact info@arexbio.com or your local distributor.

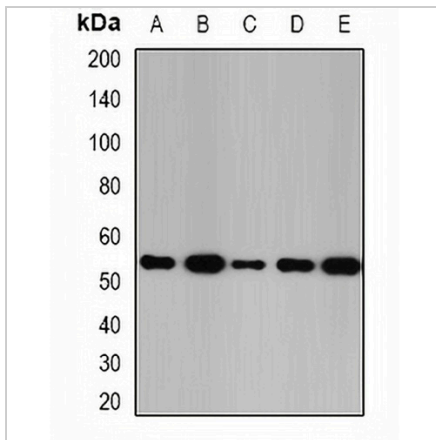
*Clone Number, Reactivity, Source/Host and Clonality can be found in the product name and Key Features section above.

DATASHEET

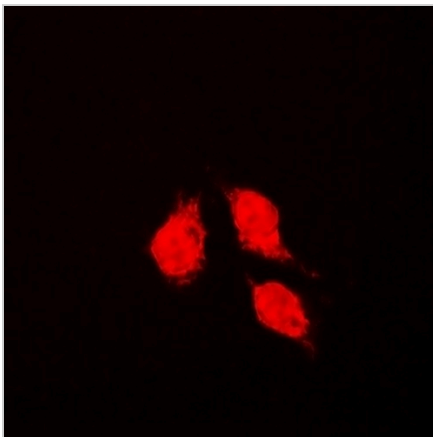
Glutathione Synthetase Rabbit Polyclonal Antibody

CAT. NO. APA13471

DATA



Western blot analysis of Glutathione Synthetase expression in SW480 (A), K562 (B), Raji (C), mouse kidney (D), mouse liver (E) whole cell lysates. (Predicted band size: 40; 52 kD; Observed band size: 52 kD)



Immunofluorescent analysis of Glutathione Synthetase staining in K562 cells. Formalin-fixed cells were permeabilized with 0.1% Triton X-100 in TBS for 5-10 minutes and blocked with 3% BSA-PBS for 30 minutes at room temperature. Cells were probed with the primary antibody in 3% BSA-PBS and incubated overnight at 4 °C in a humidified chamber. Cells were washed with PBST and incubated with a DyLight 594-conjugated secondary antibody (red) in PBS at room temperature in the dark.

STORAGE

Store at 4°C short term. For long term storage, store at -20°C, avoiding freeze/thaw cycles.

NOTE

For Research Use Only. Not for diagnostic, therapeutics, prophylactic or in vivo use.