

DATASHEET

GSTA1 Rabbit Polyclonal Antibody

CAT. NO. APA13472

KEY FEATURES

Target	GSTA1	Source / Host	Rabbit
Reactivity	Human, Mouse, Rat	Clonality	Polyclonal
Applications	WB	Conjugation	Unconjugated
Form / Buffer	Liquid in 0.42% Potassium phosphate, 0.87% Sodium chloride, pH 7.3, 30% glycerol, and 0.01% sodium azide.		Storage at -20°C

BACKGROUND

Glutathione S-transferase that catalyzes the nucleophilic attack of the sulfur atom of glutathione on the electrophilic groups of a wide range of exogenous and endogenous compounds (Probable). Involved in the formation of glutathione conjugates of both prostaglandin A2 (PGA2) and prostaglandin J2 (PGJ2) . Involved in the formation of glutathione conjugates of both prostaglandin A2 (PGA2) and prostaglandin J2 (PGJ2) . It also catalyzes the isomerization of D5-androstene-3,17-dione (AD) into D4-androstene-3,17-dione and may therefore play an important role in hormone biosynthesis . Through its glutathione-dependent peroxidase activity toward the fatty acid hydroperoxide (13S)-hydroperoxy-(9Z,11E)-octadecadienoate/13-HPODE it is also involved in the metabolism of oxidized linoleic acid .

APPLICATION

To ensure optimal assay performance, AREX recommends conducting reagent titration tailored to each testing system for optimal detection results.

WB	1:500 - 1:2000
----	----------------

*Results are sample-specific. Please refer to your local assay conditions and test parameters for reference.

PRODUCT OVERVIEW

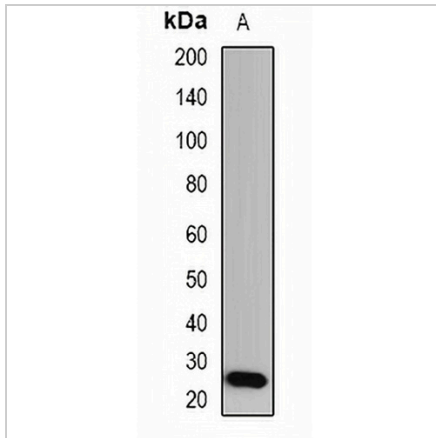
Description	Rabbit polyclonal antibody to GSTA1
Specificity	Recognizes endogenous levels of GSTA1 protein.
Antibody Type	Primary antibody
Immunogen	Recombinant fusion protein of human GSTA1
Purification	The antibody was purified by immunogen affinity chromatography.
Molecular Weight	Predicted: 25 kD; Observed: 26 kD
Form/Buffer	Liquid in 0.42% Potassium phosphate, 0.87% Sodium chloride, pH 7.3, 30% glycerol, and 0.01% sodium azide.
Alternative Names	Glutathione S-transferase A1; GST HA subunit 1; GST class-alpha member 1; GST-epsilon; GSTA1-1; GTH1
Gene Symbol	GSTA1
Entrez Gene	2938(Human); 14857(Mouse); 24422(Rat)
SwissProt	P08263(Human); P13745(Mouse); P00502(Rat)

*AREX continuously optimizes our products. Webpage content may not reflect the latest updates. For inquiries, please contact info@arexbio.com or your local distributor.

*Clone Number, Reactivity, Source/Host and Clonality can be found in the product name and Key Features section above.

DATASHEET**GSTA1 Rabbit Polyclonal Antibody**

CAT. NO. APA13472

DATA

Western blot analysis of GSTA1 expression in mouse liver (A) whole cell lysates. (Predicted band size: 25 kD; Observed band size: 26 kD)

STORAGE

Store at 4°C short term. For long term storage, store at -20°C, avoiding freeze/thaw cycles.

NOTE

For Research Use Only. Not for diagnostic, therapeutics, prophylactic or in vivo use.