

DATASHEET

GSTP1 Rabbit Polyclonal Antibody

CAT. NO. APA13473

KEY FEATURES

Target	GSTP1	Source / Host	Rabbit
Reactivity	Human, Mouse, Rat	Clonality	Polyclonal
Applications	WB, IHC, IF/ICC, IP, FC	Conjugation	Unconjugated
Form / Buffer	Liquid in 0.42% Potassium phosphate, 0.87% Sodium chloride, pH 7.3, 30% glycerol, and 0.01% sodium azide.		Storage at -20°C

BACKGROUND

Catalyzes conjugation of reduced glutathione to a wide number of exogenous and endogenous hydrophobic electrophiles . Involved in the formation of glutathione conjugates of both prostaglandin A2 (PGA2) and prostaglandin J2 (PGJ2) . Participates in the formation of novel hepxilin regioisomers . Acts as a negative regulator of ferroptosis by mediating glutathione conjugation and detoxification of 4-hydroxynonenal (4-HNE) reactive aldehyde . Negatively regulates CDK5 activity via p25/p35 translocation to prevent neurodegeneration .

APPLICATION

To ensure optimal assay performance, AREX recommends conducting reagent titration tailored to each testing system for optimal detection results.

WB	1:500 - 1:2000
IHC	1:50 - 1:200
IF/ICC	1:50 - 1:200
IP	1:20 - 1:50
FC	1:20 - 1:50

*Results are sample-specific. Please refer to your local assay conditions and test parameters for reference.

PRODUCT OVERVIEW

Description	Rabbit polyclonal antibody to GSTP1
Specificity	Recognizes endogenous levels of GSTP1 protein.
Antibody Type	Primary antibody
Immunogen	Recombinant fusion protein of human GSTP1
Purification	The antibody was purified by immunogen affinity chromatography.
Molecular Weight	Predicted: 23 kD; Observed: 25 kD
Form/Buffer	Liquid in 0.42% Potassium phosphate, 0.87% Sodium chloride, pH 7.3, 30% glycerol, and 0.01% sodium azide.
Alternative Names	FAEES3; GST3; Glutathione S-transferase P; GST class-pi; GSTP1-1
Gene Symbol	GSTP1
Entrez Gene	2950(Human); 14870(Mouse); 24426(Rat)
SwissProt	P09211(Human); P19157(Mouse); P04906(Rat)

*AREX continuously optimizes our products. Webpage content may not reflect the latest updates. For inquiries, please contact info@arexbio.com or your local distributor.

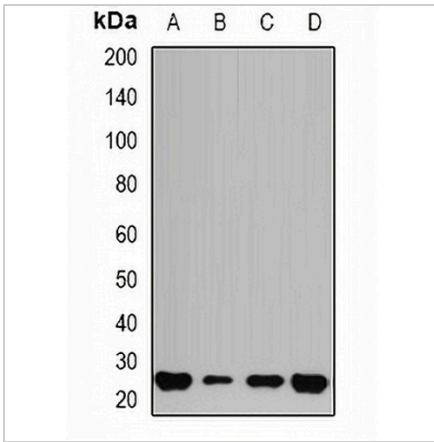
*Clone Number, Reactivity, Source/Host and Clonality can be found in the product name and Key Features section above.

DATASHEET

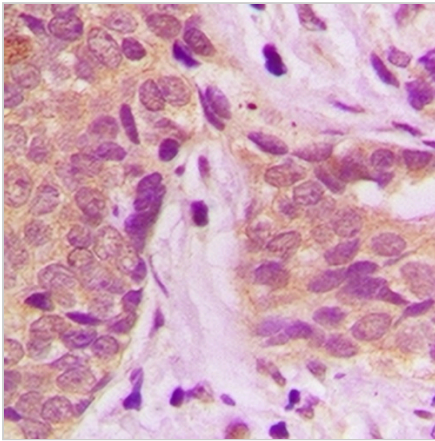
GSTP1 Rabbit Polyclonal Antibody

CAT. NO. APA13473

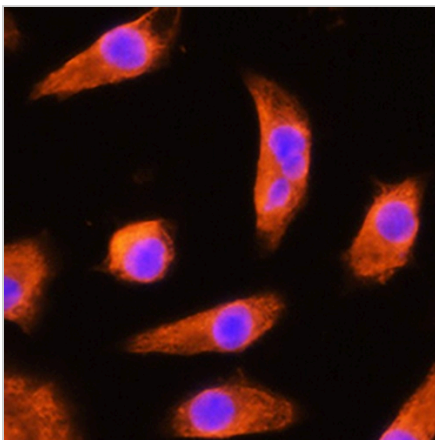
DATA



Western blot analysis of GSTP1 expression in HEK293T (A), HepG2 (B), mouse liver (C), mouse lung (D) whole cell lysates. (Predicted band size: 23 kD; Observed band size: 25 kD)



Immunohistochemical analysis of GSTP1 staining in human breast cancer formalin fixed paraffin embedded tissue section. The section was pre-treated using heat mediated antigen retrieval with sodium citrate buffer (pH 6.0). The section was then incubated with the antibody at room temperature and detected using an HRP conjugated compact polymer system. DAB was used as the chromogen. The section was then counterstained with haematoxylin and mounted with DPX.



Immunofluorescent analysis of GSTP1 staining in L929 cells. Formalin-fixed cells were permeabilized with 0.1% Triton X-100 in TBS for 5-10 minutes and blocked with 3% BSA-PBS for 30 minutes at room temperature. Cells were probed with the primary antibody in 3% BSA-PBS and incubated overnight at 4 °C in a humidified chamber. Cells were washed with PBST and incubated with a AREX® Fluor 594-conjugated secondary antibody (red) in PBS at room temperature in the dark. DAPI was used to stain the cell nuclei (blue).

STORAGE

Store at 4°C short term. For long term storage, store at -20°C, avoiding freeze/thaw cycles.

NOTE

For Research Use Only. Not for diagnostic, therapeutics, prophylactic or in vivo use.