

DATASHEET

HAPLN1 Rabbit Polyclonal Antibody

CAT. NO. APA13476

KEY FEATURES

Target	HAPLN1	Source / Host	Rabbit
Reactivity	Human, Mouse, Rat	Clonality	Polyclonal
Applications	WB, IHC	Conjugation	Unconjugated
Form / Buffer	Liquid in 0.42% Potassium phosphate, 0.87% Sodium chloride, pH 7.3, 30% glycerol, and 0.01% sodium azide.		Storage at -20°C

BACKGROUND

Stabilizes the aggregates of proteoglycan monomers with hyaluronic acid in the extracellular cartilage matrix.

APPLICATION

To ensure optimal assay performance, AREX recommends conducting reagent titration tailored to each testing system for optimal detection results.

WB	1:500 - 1:1000
IHC	1:50 - 1:200

*Results are sample-specific. Please refer to your local assay conditions and test parameters for reference.

PRODUCT OVERVIEW

Description	Rabbit polyclonal antibody to HAPLN1
Specificity	Recognizes endogenous levels of HAPLN1 protein.
Antibody Type	Primary antibody
Immunogen	Recombinant fusion protein of human HAPLN1
Purification	The antibody was purified by immunogen affinity chromatography.
Molecular Weight	Predicted: 40 kD; Observed: 50 kD
Form/Buffer	Liquid in 0.42% Potassium phosphate, 0.87% Sodium chloride, pH 7.3, 30% glycerol, and 0.01% sodium azide.
Alternative Names	CRTL1; Hyaluronan and proteoglycan link protein 1; Cartilage-linking protein 1; Cartilage-link protein; Proteoglycan link protein
Gene Symbol	HAPLN1
Entrez Gene	1404(Human); 12950(Mouse); 29331(Rat)
SwissProt	P10915(Human); Q9QUP5(Mouse); P03994(Rat)

*AREX continuously optimizes our products. Webpage content may not reflect the latest updates. For inquiries, please contact info@arexbio.com or your local distributor.

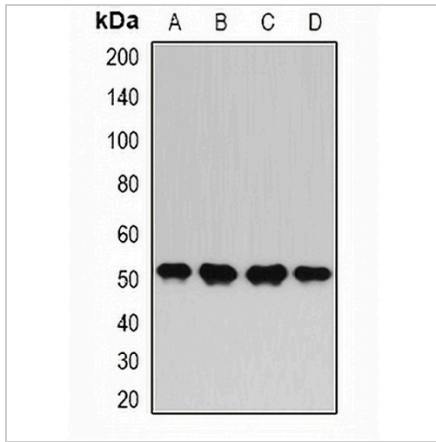
*Clone Number, Reactivity, Source/Host and Clonality can be found in the product name and Key Features section above.

DATASHEET

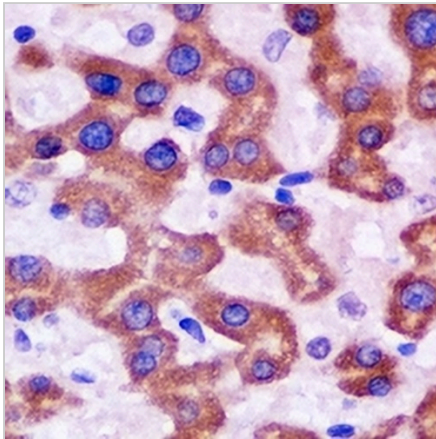
HAPLN1 Rabbit Polyclonal Antibody

CAT. NO. APA13476

DATA



Western blot analysis of HAPLN1 expression in BT474 (A), MCF7 (B), HeLa (C), HepG2 (D) whole cell lysates. (Predicted band size: 40 kD; Observed band size: 50 kD)



Immunohistochemical analysis of HAPLN1 staining in rat liver formalin fixed paraffin embedded tissue section. The section was pre-treated using heat mediated antigen retrieval with sodium citrate buffer (pH 6.0). The section was then incubated with the antibody at room temperature and detected using an HRP conjugated compact polymer system. DAB was used as the chromogen. The section was then counterstained with haematoxylin and mounted with DPX.

STORAGE

Store at 4°C short term. For long term storage, store at -20°C, avoiding freeze/thaw cycles.

NOTE

For Research Use Only. Not for diagnostic, therapeutics, prophylactic or in vivo use.