

DATASHEET

HCN1 Rabbit Polyclonal Antibody

CAT. NO. APA13478

KEY FEATURES

Target	HCN1	Source / Host	Rabbit
Reactivity	Human, Mouse	Clonality	Polyclonal
Applications	WB, IHC	Conjugation	Unconjugated
Form / Buffer	Liquid in 0.42% Potassium phosphate, 0.87% Sodium chloride, pH 7.3, 30% glycerol, and 0.01% sodium azide.		Storage at -20°C

BACKGROUND

Hyperpolarization-activated ion channel that are permeable to sodium and potassium ions . Displays lower selectivity for K(+) over Na(+) ions . Contributes to the native pacemaker currents in heart (If) and in the generation of the I(h) current which controls neuron excitability . Participates in cerebellar mechanisms of motor learning . May mediate responses to sour stimuli .

APPLICATION

To ensure optimal assay performance, AREX recommends conducting reagent titration tailored to each testing system for optimal detection results.

WB	1:500 - 1:2000
IHC	1:50 - 1:200

*Results are sample-specific. Please refer to your local assay conditions and test parameters for reference.

PRODUCT OVERVIEW

Description	Rabbit polyclonal antibody to HCN1
Specificity	Recognizes endogenous levels of HCN1 protein.
Antibody Type	Primary antibody
Immunogen	KLH-conjugated synthetic peptide of human HCN1
Purification	The antibody was purified by immunogen affinity chromatography.
Molecular Weight	Predicted: 98 kD; Observed: 99 kD
Form/Buffer	Liquid in 0.42% Potassium phosphate, 0.87% Sodium chloride, pH 7.3, 30% glycerol, and 0.01% sodium azide.
Alternative Names	BCNG1; Potassium/sodium hyperpolarization-activated cyclic nucleotide-gated channel 1; Brain cyclic nucleotide-gated channel 1; BCNG-1
Gene Symbol	HCN1
Entrez Gene	348980(Human); 15165(Mouse)
SwissProt	O60741(Human); O88704(Mouse)

*AREX continuously optimizes our products. Webpage content may not reflect the latest updates. For inquiries, please contact info@arexbio.com or your local distributor.

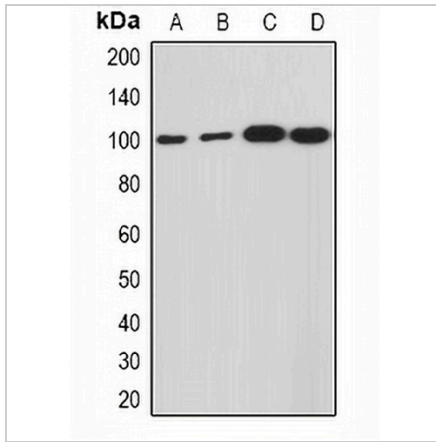
*Clone Number, Reactivity, Source/Host and Clonality can be found in the product name and Key Features section above.

DATASHEET

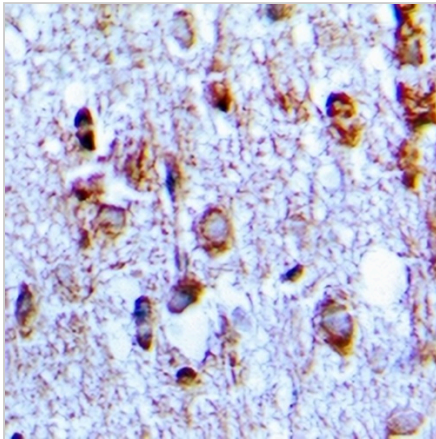
HCN1 Rabbit Polyclonal Antibody

CAT. NO. APA13478

DATA



Western blot analysis of HCN1 expression in MCF7 (A), SHSY5Y (B), mouse brain (C), mouse lung (D) whole cell lysates. (Predicted band size: 98 kD; Observed band size: 99 kD)



Immunohistochemical analysis of HCN1 staining in human brain formalin fixed paraffin embedded tissue section. The section was pre-treated using heat mediated antigen retrieval with sodium citrate buffer (pH 6.0). The section was then incubated with the antibody at room temperature and detected using an HRP conjugated compact polymer system. DAB was used as the chromogen. The section was then counterstained with haematoxylin and mounted with DPX.

STORAGE

Store at 4°C short term. For long term storage, store at -20°C, avoiding freeze/thaw cycles.

NOTE

For Research Use Only. Not for diagnostic, therapeutics, prophylactic or in vivo use.