

DATASHEET

OMI Rabbit Polyclonal Antibody

CAT. NO. APA13491

KEY FEATURES

| | | | |
|---------------|---|---------------|---------------------|
| Target | OMI | Source / Host | Rabbit |
| Reactivity | Human, Mouse, Rat | Clonality | Polyclonal |
| Applications | WB, IHC, IP | Conjugation | Unconjugated |
| Form / Buffer | Liquid in 0.42% Potassium phosphate, 0.87% Sodium chloride, pH 7.3, 30% glycerol, and 0.01% sodium azide. | | Storage at -20°C |

BACKGROUND

Serine protease that shows proteolytic activity against a non-specific substrate beta-casein . Promotes apoptosis by either relieving the inhibition of BIRC proteins on caspases, leading to an increase in caspase activity; or by a BIRC inhibition-independent, caspase-independent and serine protease activity-dependent mechanism . Cleaves BIRC6 and relieves its inhibition on CASP3, CASP7 and CASP9, but it is also prone to inhibition by BIRC6 . Cleaves THAP5 and promotes its degradation during apoptosis .

APPLICATION

To ensure optimal assay performance, AREX recommends conducting reagent titration tailored to each testing system for optimal detection results.

| | |
|-----|----------------|
| WB | 1:500 - 1:1000 |
| IHC | 1:50 - 1:200 |
| IP | 1:10 - 1:50 |

*Results are sample-specific. Please refer to your local assay conditions and test parameters for reference.

PRODUCT OVERVIEW

| | |
|-------------------|--|
| Description | Rabbit polyclonal antibody to OMI |
| Specificity | Recognizes endogenous levels of OMI protein. |
| Antibody Type | Primary antibody |
| Immunogen | Recombinant fusion protein of human OMI |
| Purification | The antibody was purified by immunogen affinity chromatography. |
| Molecular Weight | Predicted: 38; Observed: 36 kD |
| Form/Buffer | Liquid in 0.42% Potassium phosphate, 0.87% Sodium chloride, pH 7.3, 30% glycerol, and 0.01% sodium azide. |
| Alternative Names | OMI; PRSS25; Serine protease HTRA2 mitochondrial; High temperature requirement protein A2; HtrA2; Omi stress-regulated endoprotease; Serine protease 25; Serine proteinase OMI |
| Gene Symbol | HTRA2 |
| Entrez Gene | 27429(Human); 64704(Mouse) |
| SwissProt | O43464(Human); Q9JIY5(Mouse) |

*AREX continuously optimizes our products. Webpage content may not reflect the latest updates. For inquiries, please contact info@arexbio.com or your local distributor.

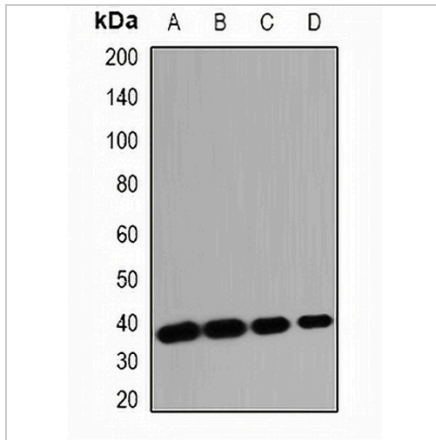
*Clone Number, Reactivity, Source/Host and Clonality can be found in the product name and Key Features section above.

DATASHEET

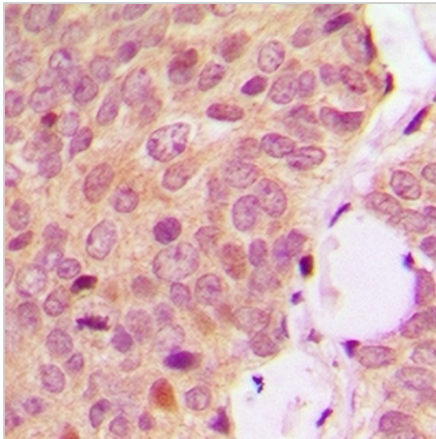
OMI Rabbit Polyclonal Antibody

CAT. NO. APA13491

DATA



Western blot analysis of OMI expression in HT29 (A), MCF7 (B), mouse heart (C), mouse kidney (D) whole cell lysates. (Predicted band size: 38; 39; 46; 48 kD; Observed band size: 36 kD)



Immunohistochemical analysis of OMI staining in human breast cancer formalin fixed paraffin embedded tissue section. The section was pre-treated using heat mediated antigen retrieval with sodium citrate buffer (pH 6.0). The section was then incubated with the antibody at room temperature and detected using an HRP conjugated compact polymer system. DAB was used as the chromogen. The section was then counterstained with haematoxylin and mounted with DPX.

STORAGE

Store at 4°C short term. For long term storage, store at -20°C, avoiding freeze/thaw cycles.

NOTE

For Research Use Only. Not for diagnostic, therapeutics, prophylactic or in vivo use.