

**DATASHEET**

**IFI6 Rabbit Polyclonal Antibody**

CAT. NO. APA13498

**KEY FEATURES**

Target	IFI6	Source / Host	Rabbit
Reactivity	Human	Clonality	Polyclonal
Applications	WB	Conjugation	Unconjugated
Form / Buffer	Liquid in 0.42% Potassium phosphate, 0.87% Sodium chloride, pH 7.3, 30% glycerol, and 0.01% sodium azide.		Storage at-20°C

**BACKGROUND**

Interferon-stimulated protein that plays an important role in innate immune response against a wide variety of viruses . Inhibits flavivirus replication by preventing the formation of virus-induced endoplasmic reticulum membrane invaginations, which are double-membrane vesicles that flaviviruses use for their replication . Has an antiviral activity towards hepatitis C virus/HCV by inhibiting the EGFR signaling pathway, whose activation is required for entry of the virus into cells . Within the nucleus, restricts hepatitis B virus/HBV promoter activity leading to substantial reduction of viral replication and gene expression . Plays a role in apoptosis, negatively regulating the intrinsic apoptotic signaling pathway and TNFSF10-induced apoptosis .

**APPLICATION**

To ensure optimal assay performance, AREX recommends conducting reagent titration tailored to each testing system for optimal detection results.

WB	1:500 - 1:2000
----	----------------

\*Results are sample-specific. Please refer to your local assay conditions and test parameters for reference.

**PRODUCT OVERVIEW**

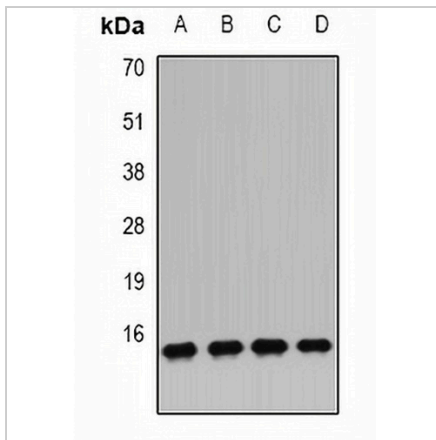
Description	Rabbit polyclonal antibody to IFI6
Specificity	Recognizes endogenous levels of IFI6 protein.
Antibody Type	Primary antibody
Immunogen	Recombinant fusion protein of human IFI6
Purification	The antibody was purified by immunogen affinity chromatography.
Molecular Weight	Predicted: 12; Observed: 13 kD
Form/Buffer	Liquid in 0.42% Potassium phosphate, 0.87% Sodium chloride, pH 7.3, 30% glycerol, and 0.01% sodium azide.
Alternative Names	G1P3; Interferon alpha-inducible protein 6; Interferon-induced protein 6-16; Ifi-6-16
Gene Symbol	IFI6
Entrez Gene	2537(Human)
SwissProt	P09912(Human)

\*AREX continuously optimizes our products. Webpage content may not reflect the latest updates. For inquiries, please contact [info@arexbio.com](mailto:info@arexbio.com) or your local distributor.

\*Clone Number, Reactivity, Source/Host and Clonality can be found in the product name and Key Features section above.

**DATASHEET****IFI6 Rabbit Polyclonal Antibody**

CAT. NO. APA13498

**DATA**

Western blot analysis of IFI6 expression in MCF7 (A), U251 (B), U937 (C), mouse pancreas (D) whole cell lysates. (Predicted band size: 12; 13 kD; Observed band size: 13 kD)

**STORAGE**

Store at 4°C short term. For long term storage, store at -20°C, avoiding freeze/thaw cycles.

**NOTE**

For Research Use Only. Not for diagnostic, therapeutics, prophylactic or in vivo use.