

**DATASHEET**

**IGF2 Rabbit Polyclonal Antibody**

CAT. NO. APA13500

**KEY FEATURES**

Target	IGF2	Source / Host	Rabbit
Reactivity	Human, Mouse	Clonality	Polyclonal
Applications	WB, IHC, IF/ICC	Conjugation	Unconjugated
Form / Buffer	Liquid in 0.42% Potassium phosphate, 0.87% Sodium chloride, pH 7.3, 30% glycerol, and 0.01% sodium azide.		Storage at -20°C

**BACKGROUND**

The insulin-like growth factors possess growth-promoting activity . Major fetal growth hormone in mammals. Plays a key role in regulating fetoplacental development. IGF2 is influenced by placental lactogen. Also involved in tissue differentiation. In adults, involved in glucose metabolism in adipose tissue, skeletal muscle and liver (Probable). Acts as a ligand for integrin which is required for IGF2 signaling . Acts as a ligand for integrin which is required for IGF2 signaling . Positively regulates myogenic transcription factor MYOD1 function by facilitating the recruitment of transcriptional coactivators, thereby controlling muscle terminal differentiation . Inhibits myoblast differentiation and modulates metabolism via increasing the mitochondrial respiration rate .

**APPLICATION**

To ensure optimal assay performance, AREX recommends conducting reagent titration tailored to each testing system for optimal detection results.

WB	1:500 - 1:2000
IHC	1:50 - 1:200
IF/ICC	1:50 - 1:200

\*Results are sample-specific. Please refer to your local assay conditions and test parameters for reference.

**PRODUCT OVERVIEW**

Description	Rabbit polyclonal antibody to IGF2
Specificity	Recognizes endogenous levels of IGF2 protein.
Antibody Type	Primary antibody
Immunogen	Recombinant fusion protein of human IGF2
Purification	The antibody was purified by immunogen affinity chromatography.
Molecular Weight	Predicted: 20; Observed: 20 kD
Form/Buffer	Liquid in 0.42% Potassium phosphate, 0.87% Sodium chloride, pH 7.3, 30% glycerol, and 0.01% sodium azide.
Alternative Names	Insulin-like growth factor II; IGF-II; Somatomedin-A
Gene Symbol	IGF2
Entrez Gene	3481(Human); 16002(Mouse)
SwissProt	P01344(Human); P09535(Mouse)

\*AREX continuously optimizes our products. Webpage content may not reflect the latest updates. For inquiries, please contact [info@arexbio.com](mailto:info@arexbio.com) or your local distributor.

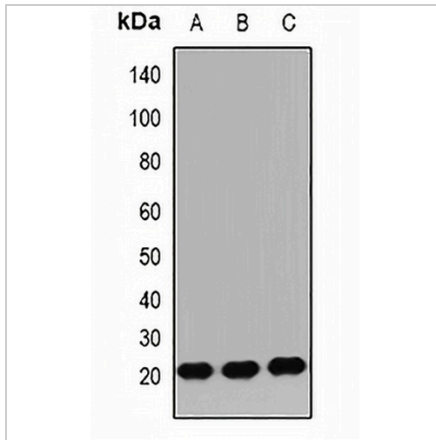
\*Clone Number, Reactivity, Source/Host and Clonality can be found in the product name and Key Features section above.

**DATASHEET**

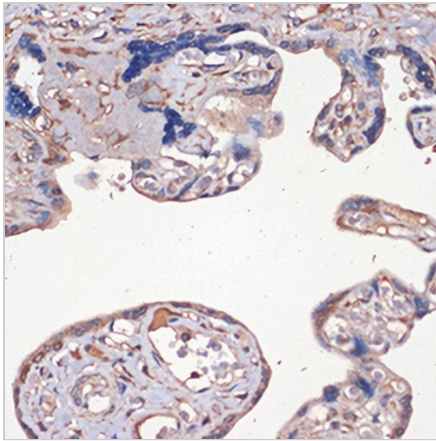
**IGF2 Rabbit Polyclonal Antibody**

CAT. NO. APA13500

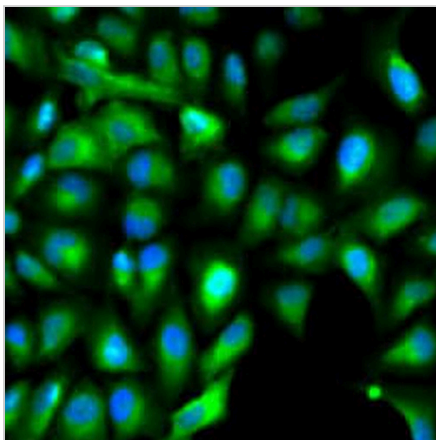
**DATA**



Western blot analysis of IGF2 expression in HepG2 (A), SW480 (B), mouse brain (C) whole cell lysates. (Predicted band size: 20; 26 kD; Observed band size: 20 kD)



Immunohistochemical analysis of IGF2 staining in human placenta formalin fixed paraffin embedded tissue section. The section was pre-treated using heat mediated antigen retrieval with sodium citrate buffer (pH 6.0). The section was then incubated with the antibody at room temperature and detected using an HRP conjugated compact polymer system. DAB was used as the chromogen. The section was then counterstained with haematoxylin and mounted with DPX.



Immunofluorescent analysis of IGF2 staining in A549 cells. Formalin-fixed cells were permeabilized with 0.1% Triton X-100 in TBS for 5-10 minutes and blocked with 3% BSA-PBS for 30 minutes at room temperature. Cells were probed with the primary antibody in 3% BSA-PBS and incubated overnight at 4 °C in a humidified chamber. Cells were washed with PBST and incubated with a AREX® Fluor 488 -conjugated secondary antibody (green) in PBS at room temperature in the dark. DAPI was used to stain the cell nuclei (blue).

**STORAGE**

Store at 4°C short term. For long term storage, store at -20°C, avoiding freeze/thaw cycles.

**NOTE**

For Research Use Only. Not for diagnostic, therapeutics, prophylactic or in vivo use.