

**DATASHEET**

**IL-1 alpha Rabbit Polyclonal Antibody**

CAT. NO. APA13507

**KEY FEATURES**

Target	IL-1 alpha	Source / Host	Rabbit
Reactivity	Human	Clonality	Polyclonal
Applications	WB	Conjugation	Unconjugated
Form / Buffer	Liquid in 0.42% Potassium phosphate, 0.87% Sodium chloride, pH 7.3, 30% glycerol, and 0.01% sodium azide.		Storage at-20°C

**BACKGROUND**

Cytokine constitutively present intracellularly in nearly all resting non-hematopoietic cells that plays an important role in inflammation and bridges the innate and adaptive immune systems . After binding to its receptor IL1R1 together with its accessory protein IL1RAP, forms the high affinity interleukin-1 receptor complex . Signaling involves the recruitment of adapter molecules such as MYD88, IRAK1 or IRAK4 . In turn, mediates the activation of NF-kappa-B and the three MAPK pathways p38, p42/p44 and JNK pathways . Within the cell, acts as an alarmin and cell death results in its liberation in the extracellular space after disruption of the cell membrane to induce inflammation and alert the host to injury or damage .

**APPLICATION**

To ensure optimal assay performance, AREX recommends conducting reagent titration tailored to each testing system for optimal detection results.

WB	1:500 - 1:2000
----	----------------

\*Results are sample-specific. Please refer to your local assay conditions and test parameters for reference.

**PRODUCT OVERVIEW**

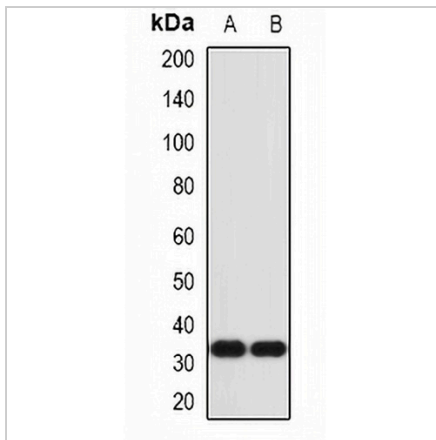
Description	Rabbit polyclonal antibody to IL-1 alpha
Specificity	Recognizes endogenous levels of IL-1 alpha protein.
Antibody Type	Primary antibody
Immunogen	Recombinant fusion protein of human IL-1 alpha
Purification	The antibody was purified by immunogen affinity chromatography.
Molecular Weight	Predicted: 30 kD; Observed: 31 kD
Form/Buffer	Liquid in 0.42% Potassium phosphate, 0.87% Sodium chloride, pH 7.3, 30% glycerol, and 0.01% sodium azide.
Alternative Names	IL1F1; Interleukin-1 alpha; IL-1 alpha; Hematopoietin-1
Gene Symbol	IL1A
Entrez Gene	3552(Human)
SwissProt	P01583(Human)

\*AREX continuously optimizes our products. Webpage content may not reflect the latest updates. For inquiries, please contact [info@arexbio.com](mailto:info@arexbio.com) or your local distributor.

\*Clone Number, Reactivity, Source/Host and Clonality can be found in the product name and Key Features section above.

**DATASHEET****IL-1 alpha Rabbit Polyclonal Antibody**

CAT. NO. APA13507

**DATA**

Western blot analysis of IL-1 alpha expression in SKOV3 (A), HeLa (B) whole cell lysates.  
(Predicted band size: 30 kD; Observed band size: 31 kD)

**STORAGE**

Store at 4°C short term. For long term storage, store at -20°C, avoiding freeze/thaw cycles.

**NOTE**

For Research Use Only. Not for diagnostic, therapeutics, prophylactic or in vivo use.