

DATASHEET

ING1 Rabbit Polyclonal Antibody

CAT. NO. APA13511

KEY FEATURES

Target	ING1	Source / Host	Rabbit
Reactivity	Human, Mouse, Rat	Clonality	Polyclonal
Applications	WB	Conjugation	Unconjugated
Form / Buffer	Liquid in 0.42% Potassium phosphate, 0.87% Sodium chloride, pH 7.3, 30% glycerol, and 0.01% sodium azide.		Storage at -20°C

BACKGROUND

Cooperates with p53/TP53 in the negative regulatory pathway of cell growth by modulating p53-dependent transcriptional activation. Implicated as a tumor suppressor gene.

APPLICATION

To ensure optimal assay performance, AREX recommends conducting reagent titration tailored to each testing system for optimal detection results.

WB	1:500 - 1:2000
----	----------------

*Results are sample-specific. Please refer to your local assay conditions and test parameters for reference.

PRODUCT OVERVIEW

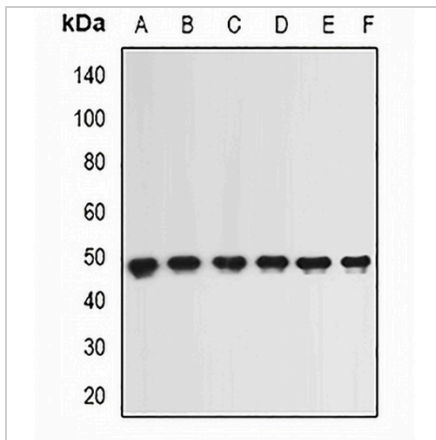
Description	Rabbit polyclonal antibody to ING1
Specificity	Recognizes endogenous levels of ING1 protein.
Antibody Type	Primary antibody
Immunogen	Recombinant fusion protein of human ING1
Purification	The antibody was purified by immunogen affinity chromatography.
Molecular Weight	Predicted: 23; Observed: 47 kD
Form/Buffer	Liquid in 0.42% Potassium phosphate, 0.87% Sodium chloride, pH 7.3, 30% glycerol, and 0.01% sodium azide.
Alternative Names	Inhibitor of growth protein 1
Gene Symbol	ING1
Entrez Gene	3621(Human); 26356(Mouse)
SwissProt	Q9UK53(Human); Q9QXV3(Mouse)

*AREX continuously optimizes our products. Webpage content may not reflect the latest updates. For inquiries, please contact info@arexbio.com or your local distributor.

*Clone Number, Reactivity, Source/Host and Clonality can be found in the product name and Key Features section above.

DATASHEET**ING1 Rabbit Polyclonal Antibody**

CAT. NO. APA13511

DATA

Western blot analysis of ING1 expression in SKOV3 (A), HT29 (B), NIH3T3 (C), mouse brain (D), mouse testis (E), rat liver (F) whole cell lysates. (Predicted band size: 23; 26; 29; 31; 46 kD; Observed band size: 47 kD)

STORAGE

Store at 4°C short term. For long term storage, store at -20°C, avoiding freeze/thaw cycles.

NOTE

For Research Use Only. Not for diagnostic, therapeutics, prophylactic or in vivo use.