

**DATASHEET**

**Integrin alpha 9 Rabbit Polyclonal Antibody**

CAT. NO. APA13517

**KEY FEATURES**

|               |   |               |                     |
|---------------|---|---------------|---------------------|
| Target        | Integrin alpha 9  | Source / Host | Rabbit              |
| Reactivity    | Human, Mouse, Rat   | Clonality     | Polyclonal          |
| Applications  | WB  | Conjugation   | Unconjugated        |
| Form / Buffer | Liquid in 0.42% Potassium phosphate, 0.87% Sodium chloride, pH 7.3, 30% glycerol, and 0.01% sodium azide. |               | Storage<br>at -20°C |

**BACKGROUND**

Integrin alpha-9/beta-1 (ITGA9:ITGB1) is a receptor for VCAM1, cytotactin and osteopontin. It recognizes the sequence A-E-I-D-G-I-E-L in cytotactin. ITGA9:ITGB1 may play a crucial role in SVEP1/polydom-mediated myoblast cell adhesion . Integrin ITGA9:ITGB1 represses PRKCA-mediated L-type voltage-gated channel Ca(2+) influx and ROCK-mediated calcium sensitivity in vascular smooth muscle cells via its interaction with SVEP1, thereby inhibiting vasoconstriction is a receptor for VCAM1, cytotactin and osteopontin. It recognizes the sequence A-E-I-D-G-I-E-L in cytotactin. ITGA9:ITGB1 may play a crucial role in SVEP1/polydom-mediated myoblast cell adhesion .

**APPLICATION**

To ensure optimal assay performance, AREX recommends conducting reagent titration tailored to each testing system for optimal detection results.

|    |                |
|----|----------------|
| WB | 1:500 - 1:2000 |
|----|----------------|

\*Results are sample-specific. Please refer to your local assay conditions and test parameters for reference.

**PRODUCT OVERVIEW**

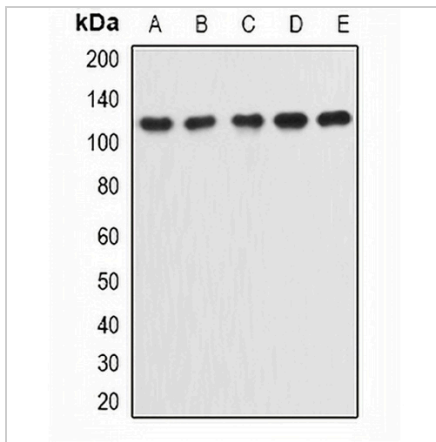
|                   |   |
|-------------------|---|
| Description       | Rabbit polyclonal antibody to Integrin alpha 9  |
| Specificity       | Recognizes endogenous levels of Integrin alpha 9 protein.   |
| Antibody Type     | Primary antibody  |
| Immunogen         | Recombinant fusion protein of human Integrin alpha 9  |
| Purification      | The antibody was purified by immunogen affinity chromatography.   |
| Molecular Weight  | Predicted: 114 kD; Observed: 114 kD   |
| Form/Buffer       | Liquid in 0.42% Potassium phosphate, 0.87% Sodium chloride, pH 7.3, 30% glycerol, and 0.01% sodium azide. |
| Alternative Names | Integrin alpha-9; Integrin alpha-RLC  |
| Gene Symbol       | ITGA9   |
| Entrez Gene       | 3680(Human)   |
| SwissProt         | Q13797(Human)   |

\*AREX continuously optimizes our products. Webpage content may not reflect the latest updates. For inquiries, please contact [info@arexbio.com](mailto:info@arexbio.com) or your local distributor.

\*Clone Number, Reactivity, Source/Host and Clonality can be found in the product name and Key Features section above.

**DATASHEET****Integrin alpha 9 Rabbit Polyclonal Antibody**

CAT. NO. APA13517

**DATA**

Western blot analysis of Integrin alpha 9 expression in A673 (A), A549 (B), NIH3T3 (C), mouse lung (D), mouse testis (E) whole cell lysates. (Predicted band size: 114 kD; Observed band size: 114 kD)

**STORAGE**

Store at 4°C short term. For long term storage, store at -20°C, avoiding freeze/thaw cycles.

**NOTE**

For Research Use Only. Not for diagnostic, therapeutics, prophylactic or in vivo use.