

**DATASHEET**

**KCNE1 Rabbit Polyclonal Antibody**

CAT. NO. APA13519

**KEY FEATURES**

Target	KCNE1	Source / Host	Rabbit
Reactivity	Human, Mouse, Rat	Clonality	Polyclonal
Applications	WB	Conjugation	Unconjugated
Form / Buffer	Liquid in 0.42% Potassium phosphate, 0.87% Sodium chloride, pH 7.3, 30% glycerol, and 0.01% sodium azide.		Storage at -20°C

**BACKGROUND**

Ancillary protein that functions as a regulatory subunit of the voltage-gated potassium (Kv) channel complex composed of pore-forming and potassium-conducting alpha subunits and of regulatory beta subunits. KCNE1 beta subunit modulates the gating kinetics and enhances stability of the channel complex composed of pore-forming and potassium-conducting alpha subunits and of regulatory beta subunits. KCNE1 beta subunit modulates the gating kinetics and enhances stability of the channel complex. Alters the gating of the delayed rectifier Kv channel containing KCNB1 alpha subunit. Associates with KCNQ1/KVLQT1 alpha subunit to form the slowly activating delayed rectifier cardiac potassium (IKs) channel responsible for ventricular muscle action potential repolarization.

**APPLICATION**

To ensure optimal assay performance, AREX recommends conducting reagent titration tailored to each testing system for optimal detection results.

WB	1:500 - 1:2000
----	----------------

\*Results are sample-specific. Please refer to your local assay conditions and test parameters for reference.

**PRODUCT OVERVIEW**

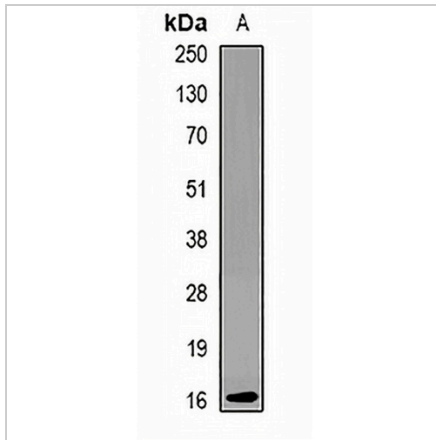
Description	Rabbit polyclonal antibody to KCNE1
Specificity	Recognizes endogenous levels of KCNE1 protein.
Antibody Type	Primary antibody
Immunogen	Recombinant fusion protein of human KCNE1
Purification	The antibody was purified by immunogen affinity chromatography.
Molecular Weight	Predicted: 14 kD; Observed: 16 kD
Form/Buffer	Liquid in 0.42% Potassium phosphate, 0.87% Sodium chloride, pH 7.3, 30% glycerol, and 0.01% sodium azide.
Alternative Names	Potassium voltage-gated channel subfamily E member 1; Delayed rectifier potassium channel subunit Isk; IKs producing slow voltage-gated potassium channel subunit beta Mink; Minimal potassium channel
Gene Symbol	KCNE1
Entrez Gene	3753(Human); 16509(Mouse); 25471(Rat)
SwissProt	P15382(Human); P23299(Mouse); P15383(Rat)

\*AREX continuously optimizes our products. Webpage content may not reflect the latest updates. For inquiries, please contact [info@arexbio.com](mailto:info@arexbio.com) or your local distributor.

\*Clone Number, Reactivity, Source/Host and Clonality can be found in the product name and Key Features section above.

**DATASHEET****KCNE1 Rabbit Polyclonal Antibody**

CAT. NO. APA13519

**DATA**

Western blot analysis of KCNE1 expression in RAW264.7 (A) whole cell lysates. (Predicted band size: 14 kD; Observed band size: 16 kD)

**STORAGE**

Store at 4°C short term. For long term storage, store at -20°C, avoiding freeze/thaw cycles.

**NOTE**

For Research Use Only. Not for diagnostic, therapeutics, prophylactic or in vivo use.