

DATASHEET

SCF Rabbit Polyclonal Antibody

CAT. NO. APA13522

KEY FEATURES

| | | | |
|---------------|---|---------------|---------------------|
| Target | SCF | Source / Host | Rabbit |
| Reactivity | Human | Clonality | Polyclonal |
| Applications | WB | Conjugation | Unconjugated |
| Form / Buffer | Liquid in 0.42% Potassium phosphate, 0.87% Sodium chloride, pH 7.3, 30% glycerol, and 0.01% sodium azide. | | Storage at -20°C |

BACKGROUND

Ligand for the receptor-type protein-tyrosine kinase KIT. Plays an essential role in the regulation of cell survival and proliferation, hematopoiesis, stem cell maintenance, gametogenesis, mast cell development, migration and function, and in melanogenesis. KITLG/SCF binding can activate several signaling pathways. Promotes phosphorylation of PIK3R1, the regulatory subunit of phosphatidylinositol 3-kinase, and subsequent activation of the kinase AKT1. KITLG/SCF and KIT also transmit signals via GRB2 and activation of RAS, RAF1 and the MAP kinases MAPK1/ERK2 and/or MAPK3/ERK1. KITLG/SCF and KIT promote activation of STAT family members STAT1, STAT3 and STAT5.

APPLICATION

To ensure optimal assay performance, AREX recommends conducting reagent titration tailored to each testing system for optimal detection results.

| | |
|----|----------------|
| WB | 1:500 - 1:1000 |
|----|----------------|

*Results are sample-specific. Please refer to your local assay conditions and test parameters for reference.

PRODUCT OVERVIEW

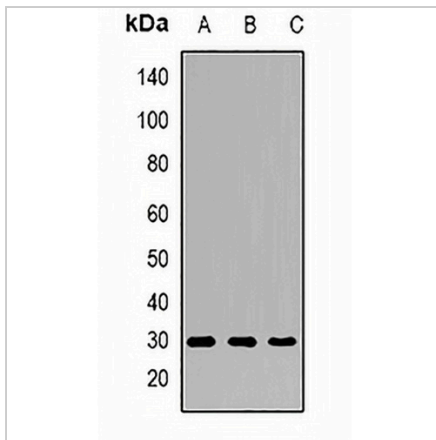
| | |
|-------------------|---|
| Description | Rabbit polyclonal antibody to SCF |
| Specificity | Recognizes endogenous levels of SCF protein. |
| Antibody Type | Primary antibody |
| Immunogen | Recombinant fusion protein of human SCF |
| Purification | The antibody was purified by immunogen affinity chromatography. |
| Molecular Weight | Predicted: 26; Observed: 30 kD |
| Form/Buffer | Liquid in 0.42% Potassium phosphate, 0.87% Sodium chloride, pH 7.3, 30% glycerol, and 0.01% sodium azide. |
| Alternative Names | MGF; SCF; Kit ligand; Mast cell growth factor; MGF; Stem cell factor; SCF; c-Kit ligand |
| Gene Symbol | KITLG |
| Entrez Gene | 4254(Human) |
| SwissProt | P21583(Human) |

*AREX continuously optimizes our products. Webpage content may not reflect the latest updates. For inquiries, please contact info@arexbio.com or your local distributor.

*Clone Number, Reactivity, Source/Host and Clonality can be found in the product name and Key Features section above.

DATASHEET**SCF Rabbit Polyclonal Antibody**

CAT. NO. APA13522

DATA**STORAGE**

Store at 4°C short term. For long term storage, store at -20°C, avoiding freeze/thaw cycles.

NOTE

For Research Use Only. Not for diagnostic, therapeutics, prophylactic or in vivo use.