

**DATASHEET**

**Kinesin 2 Rabbit Polyclonal Antibody**

CAT. NO. APA13523

**KEY FEATURES**

Target	Kinesin 2	Source / Host	Rabbit
Reactivity	Human, Mouse, Rat	Clonality	Polyclonal
Applications	WB, IHC, IF/ICC	Conjugation	Unconjugated
Form / Buffer	Liquid in 0.42% Potassium phosphate, 0.87% Sodium chloride, pH 7.3, 30% glycerol, and 0.01% sodium azide.		Storage at -20°C

**BACKGROUND**

Kinesin is a microtubule-associated force-producing protein that may play a role in organelle transport . The light chain may function in coupling of cargo to the heavy chain or in the modulation of its ATPase activity .

**APPLICATION**

To ensure optimal assay performance, AREX recommends conducting reagent titration tailored to each testing system for optimal detection results.

WB	1:500 - 1:2000
IHC	1:50 - 1:200
IF/ICC	1:50 - 1:200

\*Results are sample-specific. Please refer to your local assay conditions and test parameters for reference.

**PRODUCT OVERVIEW**

Description	Rabbit polyclonal antibody to Kinesin 2
Specificity	Recognizes endogenous levels of Kinesin 2 protein.
Antibody Type	Primary antibody
Immunogen	Recombinant fusion protein of human Kinesin 2
Purification	The antibody was purified by immunogen affinity chromatography.
Molecular Weight	Predicted: 62-72 kD; Observed: 65 kD
Form/Buffer	Liquid in 0.42% Potassium phosphate, 0.87% Sodium chloride, pH 7.3, 30% glycerol, and 0.01% sodium azide.
Alternative Names	KLC; KNS2; Kinesin light chain 1; KLC 1
Gene Symbol	KLC1
Entrez Gene	3831(Human); 171041(Rat)
SwissProt	Q07866(Human); O88447(Mouse); P37285(Rat)

\*AREX continuously optimizes our products. Webpage content may not reflect the latest updates. For inquiries, please contact [info@arexbio.com](mailto:info@arexbio.com) or your local distributor.

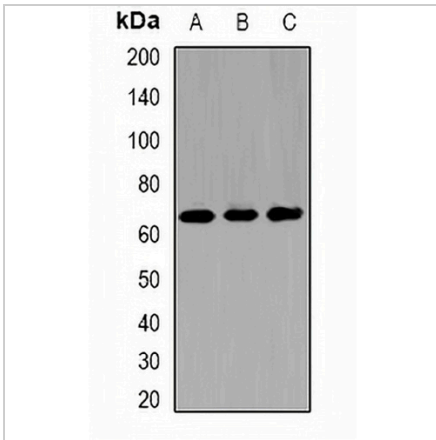
\*Clone Number, Reactivity, Source/Host and Clonality can be found in the product name and Key Features section above.

**DATASHEET**

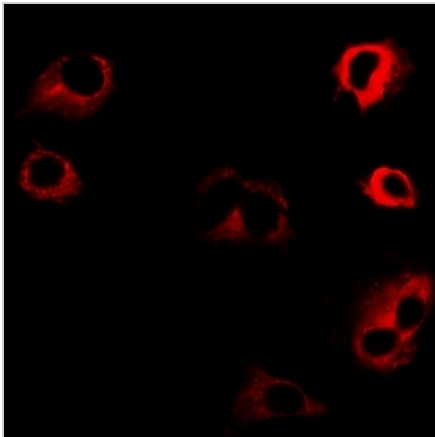
**Kinesin 2 Rabbit Polyclonal Antibody**

CAT. NO. APA13523

**DATA**



Western blot analysis of Kinesin 2 expression in SW480 (A), MCF7 (B), mouse brain (C) whole cell lysates. (Predicted band size: 62-72 kD; Observed band size: 65 kD)



Immunofluorescent analysis of Kinesin 2 staining in SW480 cells. Formalin-fixed cells were permeabilized with 0.1% Triton X-100 in TBS for 5-10 minutes and blocked with 3% BSA-PBS for 30 minutes at room temperature. Cells were probed with the primary antibody in 3% BSA-PBS and incubated overnight at 4 °C in a humidified chamber. Cells were washed with PBST and incubated with a DyLight 594-conjugated secondary antibody (red) in PBS at room temperature in the dark.

**STORAGE**

Store at 4°C short term. For long term storage, store at -20°C, avoiding freeze/thaw cycles.

**NOTE**

For Research Use Only. Not for diagnostic, therapeutics, prophylactic or in vivo use.