

DATASHEET

Kallikrein 1 Rabbit Polyclonal Antibody

CAT. NO. APA13525

KEY FEATURES

Target	Kallikrein 1	Source / Host	Rabbit
Reactivity	Human, Mouse, Rat	Clonality	Polyclonal
Applications	WB	Conjugation	Unconjugated
Form / Buffer	Liquid in 0.42% Potassium phosphate, 0.87% Sodium chloride, pH 7.3, 30% glycerol, and 0.01% sodium azide.		Storage at-20°C

BACKGROUND

Glandular kallikreins cleave Met-Lys and Arg-Ser bonds in kininogen to release Lys-bradykinin.; (Microbial infection) Cleaves Neisseria meningitidis NHBA in saliva; Neisseria is an obligate commensal of the nasopharyngeal mucosa.

APPLICATION

To ensure optimal assay performance, AREX recommends conducting reagent titration tailored to each testing system for optimal detection results.

WB	1:500 - 1:2000
----	----------------

*Results are sample-specific. Please refer to your local assay conditions and test parameters for reference.

PRODUCT OVERVIEW

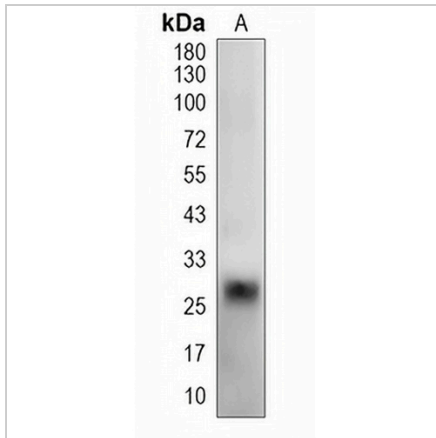
Description	Rabbit polyclonal antibody to Kallikrein 1
Specificity	Recognizes endogenous levels of Kallikrein 1 protein.
Antibody Type	Primary antibody
Immunogen	Recombinant fusion protein of human Kallikrein 1
Purification	The antibody was purified by immunogen affinity chromatography.
Molecular Weight	Predicted: 23; Observed: 22 kD
Form/Buffer	Liquid in 0.42% Potassium phosphate, 0.87% Sodium chloride, pH 7.3, 30% glycerol, and 0.01% sodium azide.
Alternative Names	Kallikrein-1; Kidney/pancreas/salivary gland kallikrein; Tissue kallikrein
Gene Symbol	KLK1
Entrez Gene	3816(Human); 16612(Mouse); 24594(Rat)
SwissProt	P06870(Human); P15947(Mouse); P00758(Rat)

*AREX continuously optimizes our products. Webpage content may not reflect the latest updates. For inquiries, please contact info@arexbio.com or your local distributor.

*Clone Number, Reactivity, Source/Host and Clonality can be found in the product name and Key Features section above.

DATASHEET**Kallikrein 1 Rabbit Polyclonal Antibody**

CAT. NO. APA13525

DATA

Western blot analysis of Kallikrein 1 expression in SW480 (A), K562 (B) whole cell lysates.
(Predicted band size: 23; 28 kD; Observed band size: 22 kD)

STORAGE

Store at 4°C short term. For long term storage, store at -20°C, avoiding freeze/thaw cycles.

NOTE

For Research Use Only. Not for diagnostic, therapeutics, prophylactic or in vivo use.