

DATASHEET

Cytokeratin 15 Rabbit Polyclonal Antibody

CAT. NO. APA13527

KEY FEATURES

Target	Cytokeratin 15	Source / Host	Rabbit
Reactivity	Human, Mouse, Rat	Clonality	Polyclonal
Applications	WB	Conjugation	Unconjugated
Form / Buffer	Liquid in 0.42% Potassium phosphate, 0.87% Sodium chloride, pH 7.3, 30% glycerol, and 0.01% sodium azide.		Storage at -20°C

BACKGROUND

The protein encoded by this gene is a member of the keratin gene family. The keratins are intermediate filament proteins responsible for the structural integrity of epithelial cells and are subdivided into cytokeratins and hair keratins. Most of the type I cytokeratins consist of acidic proteins which are arranged in pairs of heterotypic keratin chains and are clustered in a region on chromosome 17q21.2.

APPLICATION

To ensure optimal assay performance, AREX recommends conducting reagent titration tailored to each testing system for optimal detection results.

WB	1:500 - 1:1000
----	----------------

*Results are sample-specific. Please refer to your local assay conditions and test parameters for reference.

PRODUCT OVERVIEW

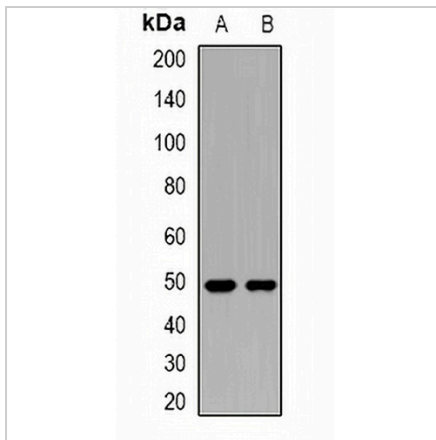
Description	Rabbit polyclonal antibody to Cytokeratin 15
Specificity	Recognizes endogenous levels of Cytokeratin 15 protein.
Antibody Type	Primary antibody
Immunogen	Recombinant fusion protein of human Cytokeratin 15
Purification	The antibody was purified by immunogen affinity chromatography.
Molecular Weight	Predicted: 28; Observed: 49 kD
Form/Buffer	Liquid in 0.42% Potassium phosphate, 0.87% Sodium chloride, pH 7.3, 30% glycerol, and 0.01% sodium azide.
Alternative Names	KRTB; Keratin, type I cytoskeletal 15; Cytokeratin-15; CK-15; Keratin-15; K15
Gene Symbol	KRT15
Entrez Gene	3866(Human); 16665(Mouse); 287700(Rat)
SwissProt	P19012(Human); Q61414(Mouse); Q61FV3(Rat)

*AREX continuously optimizes our products. Webpage content may not reflect the latest updates. For inquiries, please contact info@arexbio.com or your local distributor.

*Clone Number, Reactivity, Source/Host and Clonality can be found in the product name and Key Features section above.

DATASHEET**Cytokeratin 15 Rabbit Polyclonal Antibody**

CAT. NO. APA13527

DATA

Western blot analysis of Cytokeratin 15 expression in HeLa (A), SW480 (B) whole cell lysates. (Predicted band size: 28; 49 kD; Observed band size: 49 kD)

STORAGE

Store at 4°C short term. For long term storage, store at -20°C, avoiding freeze/thaw cycles.

NOTE

For Research Use Only. Not for diagnostic, therapeutics, prophylactic or in vivo use.