

## DATASHEET

# LDHA Rabbit Polyclonal Antibody

CAT. NO. APA13529

### KEY FEATURES

Target	LDHA	Source / Host	Rabbit
Reactivity	Human, Mouse, Rat	Clonality	Polyclonal
Applications	WB, IF/ICC	Conjugation	Unconjugated
Form / Buffer	Liquid in 0.42% Potassium phosphate, 0.87% Sodium chloride, pH 7.3, 30% glycerol, and 0.01% sodium azide.		Storage at -20°C

### BACKGROUND

Interconverts simultaneously and stereospecifically pyruvate and lactate with concomitant interconversion of NADH and NAD(+).

### APPLICATION

To ensure optimal assay performance, AREX recommends conducting reagent titration tailored to each testing system for optimal detection results.

WB	1:500 - 1:2000
IF/ICC	1:10 - 1:100

\*Results are sample-specific. Please refer to your local assay conditions and test parameters for reference.

### PRODUCT OVERVIEW

Description	Rabbit polyclonal antibody to LDHA
Specificity	Recognizes endogenous levels of LDHA protein.
Antibody Type	Primary antibody
Immunogen	Recombinant fusion protein of human LDHA
Purification	The antibody was purified by immunogen affinity chromatography.
Molecular Weight	Predicted: 26; Observed: 37 kD
Form/Buffer	Liquid in 0.42% Potassium phosphate, 0.87% Sodium chloride, pH 7.3, 30% glycerol, and 0.01% sodium azide.
Alternative Names	L-lactate dehydrogenase A chain; LDH-A; Cell proliferation-inducing gene 19 protein; LDH muscle subunit; LDH-M; Renal carcinoma antigen NY-REN-59
Gene Symbol	LDHA
Entrez Gene	3939(Human); 16828(Mouse); 24533(Rat)
SwissProt	P00338(Human); P06151(Mouse); P04642(Rat)

\*AREX continuously optimizes our products. Webpage content may not reflect the latest updates. For inquiries, please contact [info@arexbio.com](mailto:info@arexbio.com) or your local distributor.

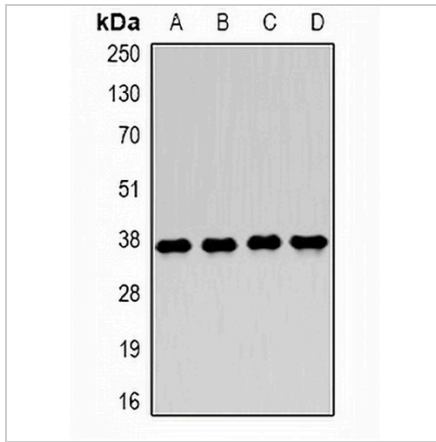
\*Clone Number, Reactivity, Source/Host and Clonality can be found in the product name and Key Features section above.

**DATASHEET**

**LDHA Rabbit Polyclonal Antibody**

CAT. NO. APA13529

**DATA**



Western blot analysis of LDHA expression in MCF7 (A), Jurkat (B), NIH3T3 (C), mouse skeletal muscle (D) whole cell lysates. (Predicted band size: 26; 30; 36; 39 kD; Observed band size: 37 kD)



Immunofluorescent analysis of LDHA staining in A549 cells. Formalin-fixed cells were permeabilized with 0.1% Triton X-100 in TBS for 5-10 minutes and blocked with 3% BSA-PBS for 30 minutes at room temperature. Cells were probed with the primary antibody in 3% BSA-PBS and incubated overnight at 4 °C in a humidified chamber. Cells were washed with PBST and incubated with a DyLight 594-conjugated secondary antibody (red) in PBS at room temperature in the dark.

**STORAGE**

Store at 4°C short term. For long term storage, store at -20°C, avoiding freeze/thaw cycles.

**NOTE**

For Research Use Only. Not for diagnostic, therapeutics, prophylactic or in vivo use.