

DATASHEET

LITAF Rabbit Polyclonal Antibody

CAT. NO. APA13531

KEY FEATURES

Target	LITAF	Source / Host	Rabbit
Reactivity	Human, Mouse, Rat	Clonality	Polyclonal
Applications	WB, IF/ICC	Conjugation	Unconjugated
Form / Buffer	Liquid in 0.42% Potassium phosphate, 0.87% Sodium chloride, pH 7.3, 30% glycerol, and 0.01% sodium azide.		Storage at -20°C

BACKGROUND

Plays a role in endosomal protein trafficking and in targeting proteins for lysosomal degradation . Plays a role in targeting endocytosed EGFR and ERGG3 for lysosomal degradation, and thereby helps down-regulate downstream signaling cascades . Helps recruit the ESCRT complex components TSG101, HGS and STAM to cytoplasmic membranes . Probably plays a role in regulating protein degradation via its interaction with NEDD4 . May also contribute to the regulation of gene expression in the nucleus . Binds DNA (in vitro) and may play a synergistic role with STAT6 in the nucleus in regulating the expression of various cytokines . May regulate the expression of numerous cytokines, such as TNF, CCL2, CCL5, CXCL1, IL1A and IL10 .

APPLICATION

To ensure optimal assay performance, AREX recommends conducting reagent titration tailored to each testing system for optimal detection results.

WB	1:500 - 1:2000
IF/ICC	1:50 - 1:200

*Results are sample-specific. Please refer to your local assay conditions and test parameters for reference.

PRODUCT OVERVIEW

Description	Rabbit polyclonal antibody to LITAF
Specificity	Recognizes endogenous levels of LITAF protein.
Antibody Type	Primary antibody
Immunogen	Recombinant fusion protein of human LITAF
Purification	The antibody was purified by immunogen affinity chromatography.
Molecular Weight	Predicted: 15; Observed: 23 kD
Form/Buffer	Liquid in 0.42% Potassium phosphate, 0.87% Sodium chloride, pH 7.3, 30% glycerol, and 0.01% sodium azide.
Alternative Names	PIG7; SIMPLE; Lipopolysaccharide-induced tumor necrosis factor-alpha factor; LPS-induced TNF-alpha factor; Small integral membrane protein of lysosome/late endosome; p53-induced gene 7 protein
Gene Symbol	LITAF
Entrez Gene	9516(Human); 56722(Mouse); 65161(Rat)
SwissProt	Q99732(Human); Q9JLJ0(Mouse); POC0T0(Rat)

*AREX continuously optimizes our products. Webpage content may not reflect the latest updates. For inquiries, please contact info@arexbio.com or your local distributor.

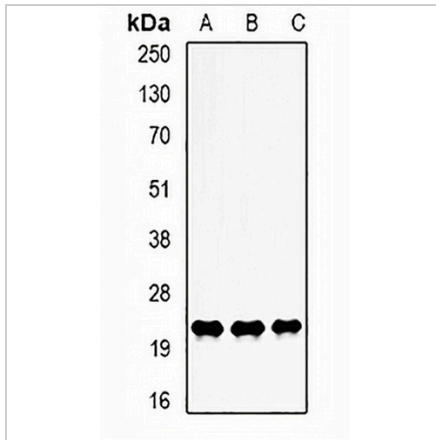
*Clone Number, Reactivity, Source/Host and Clonality can be found in the product name and Key Features section above.

DATASHEET

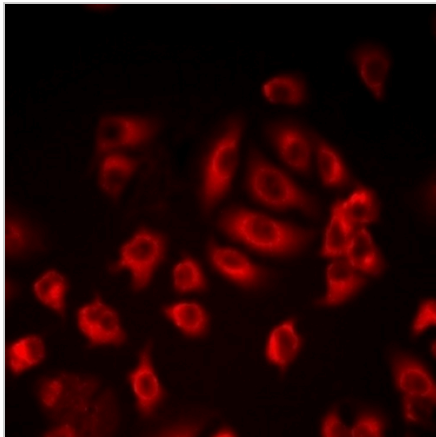
LITAF Rabbit Polyclonal Antibody

CAT. NO. APA13531

DATA



Western blot analysis of LITAF expression in K562 (A), HeLa (B), HepG2 (C) whole cell lysates. (Predicted band size: 15; 17; 23 kD; Observed band size: 23 kD)



Immunofluorescent analysis of LITAF staining in HepG2 cells. Formalin-fixed cells were permeabilized with 0.1% Triton X-100 in TBS for 5-10 minutes and blocked with 3% BSA-PBS for 30 minutes at room temperature. Cells were probed with the primary antibody in 3% BSA-PBS and incubated overnight at 4 °C in a humidified chamber. Cells were washed with PBST and incubated with a DyLight 594-conjugated secondary antibody (red) in PBS at room temperature in the dark.

STORAGE

Store at 4°C short term. For long term storage, store at -20°C, avoiding freeze/thaw cycles.

NOTE

For Research Use Only. Not for diagnostic, therapeutics, prophylactic or in vivo use.