

DATASHEET

MD-2 Rabbit Polyclonal Antibody

CAT. NO. APA13534

KEY FEATURES

Target	MD-2	Source / Host	Rabbit
Reactivity	Human, Mouse, Rat	Clonality	Polyclonal
Applications	WB	Conjugation	Unconjugated
Form / Buffer	Liquid in 0.42% Potassium phosphate, 0.87% Sodium chloride, pH 7.3, 30% glycerol, and 0.01% sodium azide.		Storage at -20°C

BACKGROUND

Binds bacterial lipopolysaccharide (LPS) . Cooperates with TLR4 in the innate immune response to bacterial lipopolysaccharide (LPS), and with TLR2 in the response to cell wall components from Gram-positive and Gram-negative bacteria . Enhances TLR4-dependent activation of NF-kappa-B . Cells expressing both LY96 and TLR4, but not TLR4 alone, respond to LPS .

APPLICATION

To ensure optimal assay performance, AREX recommends conducting reagent titration tailored to each testing system for optimal detection results.

WB	1:500 - 1:2000
----	----------------

*Results are sample-specific. Please refer to your local assay conditions and test parameters for reference.

PRODUCT OVERVIEW

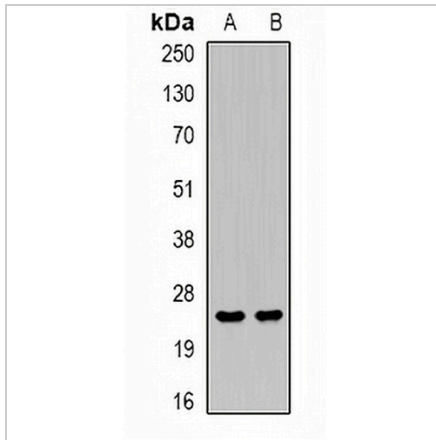
Description	Rabbit polyclonal antibody to MD-2
Specificity	Recognizes endogenous levels of MD-2 protein.
Antibody Type	Primary antibody
Immunogen	Recombinant fusion protein of human MD-2
Purification	The antibody was purified by immunogen affinity chromatography.
Molecular Weight	Predicted: 14; Observed: 25 kD
Form/Buffer	Liquid in 0.42% Potassium phosphate, 0.87% Sodium chloride, pH 7.3, 30% glycerol, and 0.01% sodium azide.
Alternative Names	ESOP1; MD2; Lymphocyte antigen 96; Ly-96; ESOP-1; Protein MD-2
Gene Symbol	LY96
Entrez Gene	23643(Human); 17087(Mouse)
SwissProt	Q9Y6Y9(Human); Q9JHF9(Mouse)

*AREX continuously optimizes our products. Webpage content may not reflect the latest updates. For inquiries, please contact info@arexbio.com or your local distributor.

*Clone Number, Reactivity, Source/Host and Clonality can be found in the product name and Key Features section above.

DATASHEET**MD-2 Rabbit Polyclonal Antibody**

CAT. NO. APA13534

DATA

Western blot analysis of MD-2 expression in mouse liver (A), mouse kidney (B) whole cell lysates. (Predicted band size: 14; 18 kD; Observed band size: 25 kD)

STORAGE

Store at 4°C short term. For long term storage, store at -20°C, avoiding freeze/thaw cycles.

NOTE

For Research Use Only. Not for diagnostic, therapeutics, prophylactic or in vivo use.