

DATASHEET

NRAGE Rabbit Polyclonal Antibody

CAT. NO. APA13536

KEY FEATURES

Target	NRAGE	Source / Host	Rabbit
Reactivity	Human, Mouse, Rat	Clonality	Polyclonal
Applications	WB, IHC	Conjugation	Unconjugated
Form / Buffer	Liquid in 0.42% Potassium phosphate, 0.87% Sodium chloride, pH 7.3, 30% glycerol, and 0.01% sodium azide.		Storage at -20°C

BACKGROUND

Involved in the apoptotic response after nerve growth factor (NGF) binding in neuronal cells. Inhibits cell cycle progression, and facilitates NGFR-mediated apoptosis. May act as a regulator of the function of DLX family members. May enhance ubiquitin ligase activity of RING-type zinc finger-containing E3 ubiquitin-protein ligases. Proposed to act through recruitment and/or stabilization of the Ubl-conjugating enzyme (E2) at the E3:substrate complex. Plays a role in the circadian rhythm regulation. May act as RORA co-regulator, modulating the expression of core clock genes such as BMAL1 and NFIL3, induced, or NR1D1, repressed.

APPLICATION

To ensure optimal assay performance, AREX recommends conducting reagent titration tailored to each testing system for optimal detection results.

WB	1:500 - 1:1000
IHC	1:50 - 1:200

*Results are sample-specific. Please refer to your local assay conditions and test parameters for reference.

PRODUCT OVERVIEW

Description	Rabbit polyclonal antibody to NRAGE
Specificity	Recognizes endogenous levels of NRAGE protein.
Antibody Type	Primary antibody
Immunogen	Recombinant fusion protein of human NRAGE
Purification	The antibody was purified by immunogen affinity chromatography.
Molecular Weight	Predicted: 86; Observed: 86 kD
Form/Buffer	Liquid in 0.42% Potassium phosphate, 0.87% Sodium chloride, pH 7.3, 30% glycerol, and 0.01% sodium azide.
Alternative Names	NRAGE; Melanoma-associated antigen D1; MAGE tumor antigen CCF; MAGE-D1 antigen; Neurotrophin receptor-interacting MAGE homolog
Gene Symbol	MAGED1
Entrez Gene	9500(Human); 94275(Mouse); 84469(Rat)
SwissProt	Q9Y5V3(Human); Q9QYH6(Mouse); Q9ES73(Rat)

*AREX continuously optimizes our products. Webpage content may not reflect the latest updates. For inquiries, please contact info@arexbio.com or your local distributor.

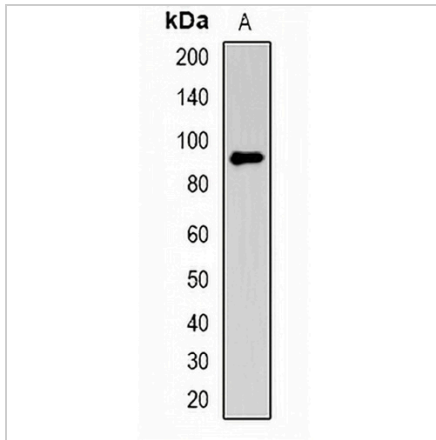
*Clone Number, Reactivity, Source/Host and Clonality can be found in the product name and Key Features section above.

DATASHEET

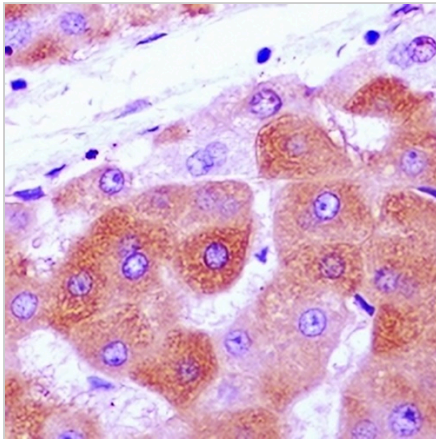
NRAGE Rabbit Polyclonal Antibody

CAT. NO. APA13536

DATA



Western blot analysis of NRAGE expression in A549 (A) whole cell lysates. (Predicted band size: 86; 91 kD; Observed band size: 86 kD)



Immunohistochemical analysis of NRAGE staining in human liver cancer formalin fixed paraffin embedded tissue section. The section was pre-treated using heat mediated antigen retrieval with sodium citrate buffer (pH 6.0). The section was then incubated with the antibody at room temperature and detected using an HRP conjugated compact polymer system. DAB was used as the chromogen. The section was then counterstained with haematoxylin and mounted with DPX.

STORAGE

Store at 4°C short term. For long term storage, store at -20°C, avoiding freeze/thaw cycles.

NOTE

For Research Use Only. Not for diagnostic, therapeutics, prophylactic or in vivo use.