

DATASHEET

Monoamine Oxidase B Rabbit Polyclonal Antibody

CAT. NO. APA13537

KEY FEATURES

| | | | |
|---------------|---|---------------|---------------------|
| Target | Monoamine Oxidase B | Source / Host | Rabbit |
| Reactivity | Human, Mouse, Rat | Clonality | Polyclonal |
| Applications | WB, IHC, IF/ICC | Conjugation | Unconjugated |
| Form / Buffer | Liquid in 0.42% Potassium phosphate, 0.87% Sodium chloride, pH 7.3, 30% glycerol, and 0.01% sodium azide. | | Storage at -20°C |

BACKGROUND

Catalyzes the oxidative deamination of primary and some secondary amines such as neurotransmitters, and exogenous amines including the tertiary amine, neurotoxin 1-methyl-4-phenyl-1,2,3,6-tetrahydropyridine (MPTP), with concomitant reduction of oxygen to hydrogen peroxide and participates in the metabolism of neuroactive and vasoactive amines in the central nervous system and peripheral tissues, with concomitant reduction of oxygen to hydrogen peroxide and participates in the metabolism of neuroactive and vasoactive amines in the central nervous system and peripheral tissues. Preferentially degrades benzylamine and phenylethylamine.

APPLICATION

To ensure optimal assay performance, AREX recommends conducting reagent titration tailored to each testing system for optimal detection results.

| | |
|--------|----------------|
| WB | 1:500 - 1:2000 |
| IHC | 1:50 - 1:200 |
| IF/ICC | 1:50 - 1:200 |

*Results are sample-specific. Please refer to your local assay conditions and test parameters for reference.

PRODUCT OVERVIEW

| | |
|-------------------|---|
| Description | Rabbit polyclonal antibody to Monoamine Oxidase B |
| Specificity | Recognizes endogenous levels of Monoamine Oxidase B protein. |
| Antibody Type | Primary antibody |
| Immunogen | Recombinant fusion protein of human Monoamine Oxidase B |
| Purification | The antibody was purified by immunogen affinity chromatography. |
| Molecular Weight | Predicted: 46; Observed: 60 kD |
| Form/Buffer | Liquid in 0.42% Potassium phosphate, 0.87% Sodium chloride, pH 7.3, 30% glycerol, and 0.01% sodium azide. |
| Alternative Names | Amine oxidase [flavin-containing] B; Monoamine oxidase type B; MAO-B |
| Gene Symbol | MAOB |
| Entrez Gene | 4129(Human); 109731(Mouse); 25750(Rat) |
| SwissProt | P27338(Human); Q8BW75(Mouse); P19643(Rat) |

*AREX continuously optimizes our products. Webpage content may not reflect the latest updates. For inquiries, please contact info@arexbio.com or your local distributor.

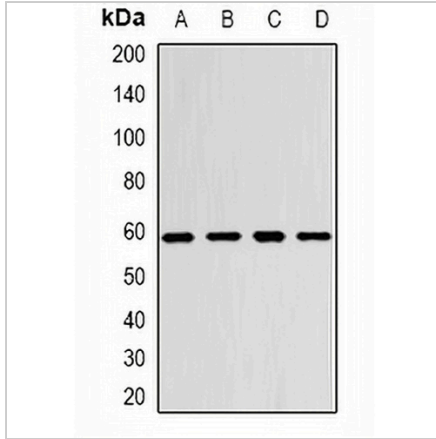
*Clone Number, Reactivity, Source/Host and Clonality can be found in the product name and Key Features section above.

DATASHEET

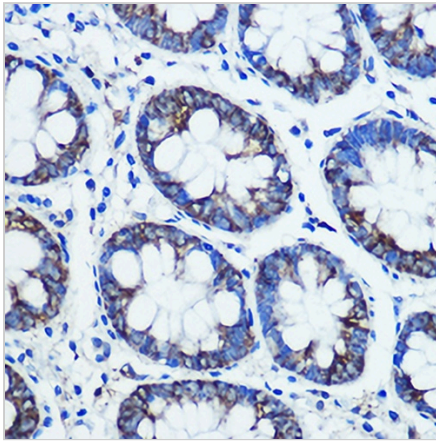
Monoamine Oxidase B Rabbit Polyclonal Antibody

CAT. NO. APA13537

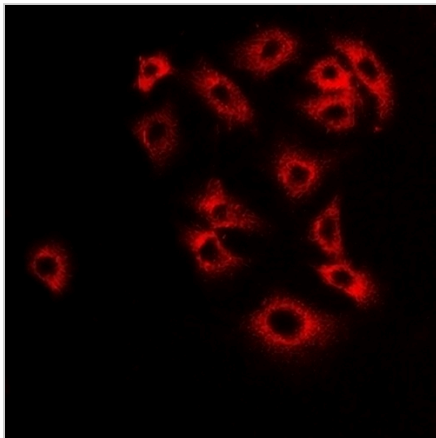
DATA



Western blot analysis of Monoamine Oxidase B expression in SW480 (A), Hela (B), mouse brain (C), mouse heart (D) whole cell lysates. (Predicted band size: 46; 58 kD; Observed band size: 60 kD)



Immunohistochemical analysis of Monoamine Oxidase B staining in human colon formalin fixed paraffin embedded tissue section. The section was pre-treated using heat mediated antigen retrieval with sodium citrate buffer (pH 6.0). The section was then incubated with the antibody at room temperature and detected using an HRP conjugated compact polymer system. DAB was used as the chromogen. The section was then counterstained with haematoxylin and mounted with DPX.



Immunofluorescent analysis of Monoamine Oxidase B staining in Hela cells. Formalin-fixed cells were permeabilized with 0.1% Triton X-100 in TBS for 5-10 minutes and blocked with 3% BSA-PBS for 30 minutes at room temperature. Cells were probed with the primary antibody in 3% BSA-PBS and incubated overnight at 4 °C in a humidified chamber. Cells were washed with PBST and incubated with a DyLight 594-conjugated secondary antibody (red) in PBS at room temperature in the dark.

STORAGE

Store at 4°C short term. For long term storage, store at -20°C, avoiding freeze/thaw cycles.

NOTE

For Research Use Only. Not for diagnostic, therapeutics, prophylactic or in vivo use.