

**DATASHEET**

**SAPK2 Rabbit Polyclonal Antibody**

CAT. NO. APA13541

**KEY FEATURES**

Target	SAPK2	Source / Host	Rabbit
Reactivity	Human, Mouse, Rat	Clonality	Polyclonal
Applications	WB, IHC	Conjugation	Unconjugated
Form / Buffer	Liquid in 0.42% Potassium phosphate, 0.87% Sodium chloride, pH 7.3, 30% glycerol, and 0.01% sodium azide.		Storage at-20°C

**BACKGROUND**

Serine/threonine kinase which acts as an essential component of the MAP kinase signal transduction pathway . MAPK11 is one of the four p38 MAPKs which play an important role in the cascades of cellular responses evoked by extracellular stimuli such as pro-inflammatory cytokines or physical stress leading to direct activation of transcription factors . Accordingly, p38 MAPKs phosphorylate a broad range of proteins and it has been estimated that they may have approximately 200 to 300 substrates each . MAPK11 functions are mostly redundant with those of MAPK14 . Some of the targets are downstream kinases which are activated through phosphorylation and further phosphorylate additional targets .

**APPLICATION**

To ensure optimal assay performance, AREX recommends conducting reagent titration tailored to each testing system for optimal detection results.

WB	1:500 - 1:2000
IHC	1:50 - 1:100

\*Results are sample-specific. Please refer to your local assay conditions and test parameters for reference.

**PRODUCT OVERVIEW**

Description	Rabbit polyclonal antibody to SAPK2
Specificity	Recognizes endogenous levels of SAPK2 protein.
Antibody Type	Primary antibody
Immunogen	KLH-conjugated synthetic peptide of human SAPK2
Purification	The antibody was purified by immunogen affinity chromatography.
Molecular Weight	Predicted: 23; Observed: 41 kD
Form/Buffer	Liquid in 0.42% Potassium phosphate, 0.87% Sodium chloride, pH 7.3, 30% glycerol, and 0.01% sodium azide.
Alternative Names	PRKM11; SAPK2; SAPK2B; Mitogen-activated protein kinase 11; MAP kinase 11; MAPK 11; Mitogen-activated protein kinase p38 beta; MAP kinase p38 beta; p38b; Stress-activated protein kinase 2b; SAPK2b; p38-2
Gene Symbol	MAPK11
Entrez Gene	5600(Human); 19094(Mouse)
SwissProt	Q15759(Human); Q9WUI1(Mouse)

\*AREX continuously optimizes our products. Webpage content may not reflect the latest updates. For inquiries, please contact [info@arex.bio](mailto:info@arex.bio) or your local distributor.

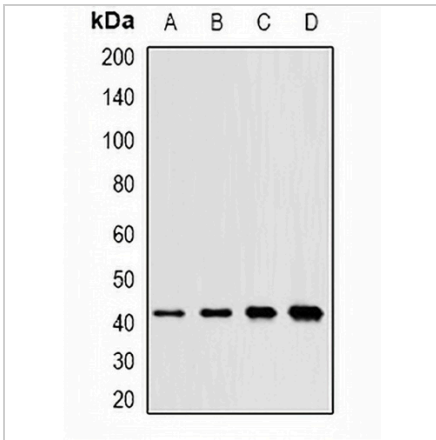
\*Clone Number, Reactivity, Source/Host and Clonality can be found in the product name and Key Features section above.

**DATASHEET**

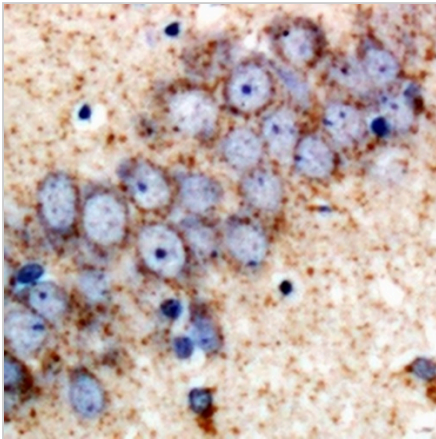
**SAPK2 Rabbit Polyclonal Antibody**

CAT. NO. APA13541

**DATA**



Western blot analysis of SAPK2 expression in SW620 (A), mouse kidney (B), mouse liver (C), rat brain (D) whole cell lysates. (Predicted band size: 23; 41 kD; Observed band size: 41 kD)



Immunohistochemical analysis of SAPK2 staining in rat brain formalin fixed paraffin embedded tissue section. The section was pre-treated using heat mediated antigen retrieval with sodium citrate buffer (pH 6.0). The section was then incubated with the antibody at room temperature and detected using an HRP conjugated compact polymer system. DAB was used as the chromogen. The section was then counterstained with haematoxylin and mounted with DPX.

**STORAGE**

Store at 4°C short term. For long term storage, store at -20°C, avoiding freeze/thaw cycles.

**NOTE**

For Research Use Only. Not for diagnostic, therapeutics, prophylactic or in vivo use.