

DATASHEET

MBTPS1 Rabbit Polyclonal Antibody

CAT. NO. APA13546

KEY FEATURES

Target	MBTPS1	Source / Host	Rabbit
Reactivity	Human, Mouse, Rat	Clonality	Polyclonal
Applications	WB	Conjugation	Unconjugated
Form / Buffer	Liquid in 0.42% Potassium phosphate, 0.87% Sodium chloride, pH 7.3, 30% glycerol, and 0.01% sodium azide.		Storage at-20°C

BACKGROUND

Serine protease that cleaves after hydrophobic or small residues, provided that Arg or Lys is in position P4: known substrates include SREBF1/SREBP1, SREBF2/SREBP2, BDNF, GNPTAB, ATF6, ATF6B and FAM20C . Cleaves substrates after Arg-Ser-Val-Leu (SREBP2), Arg-His-Leu-Leu (ATF6), Arg-Gly-Leu-Thr (BDNF) and its own propeptide after Arg-Arg-Leu-Leu . Catalyzes the first step in the proteolytic activation of the sterol regulatory element-binding proteins (SREBPs) SREBF1/SREBP1 and SREBF2/SREBP2 . Also mediates the first step in the proteolytic activation of the cyclic AMP-dependent transcription factor ATF-6 (ATF6 and ATF6B) . Mediates the protein cleavage of GNPTAB into subunit alpha and beta, thereby participating in biogenesis of lysosomes .

APPLICATION

To ensure optimal assay performance, AREX recommends conducting reagent titration tailored to each testing system for optimal detection results.

WB	1:500 - 1:1000
----	----------------

*Results are sample-specific. Please refer to your local assay conditions and test parameters for reference.

PRODUCT OVERVIEW

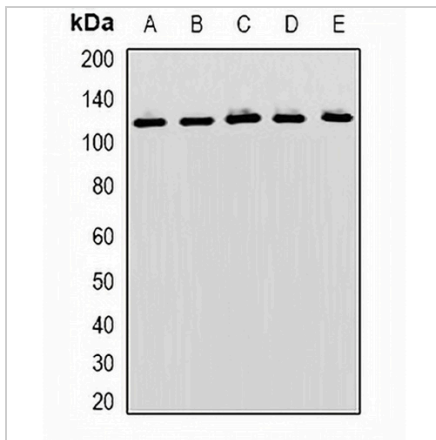
Description	Rabbit polyclonal antibody to MBTPS1
Specificity	Recognizes endogenous levels of MBTPS1 protein.
Antibody Type	Primary antibody
Immunogen	Recombinant fusion protein of human MBTPS1
Purification	The antibody was purified by immunogen affinity chromatography.
Molecular Weight	Predicted: 117 kD; Observed: 117 kD
Form/Buffer	Liquid in 0.42% Potassium phosphate, 0.87% Sodium chloride, pH 7.3, 30% glycerol, and 0.01% sodium azide.
Alternative Names	KIAA0091; S1P; SKI1; Membrane-bound transcription factor site-1 protease; Endopeptidase S1P; Subtilisin/kexin-isozyme 1; SKI-1
Gene Symbol	MBTPS1
Entrez Gene	8720(Human); 56453(Mouse); 89842(Rat)
SwissProt	Q14703(Human); Q9WTZ2(Mouse); Q9WTZ3(Rat)

*AREX continuously optimizes our products. Webpage content may not reflect the latest updates. For inquiries, please contact info@arexbio.com or your local distributor.

*Clone Number, Reactivity, Source/Host and Clonality can be found in the product name and Key Features section above.

DATASHEET**MBTPS1 Rabbit Polyclonal Antibody**

CAT. NO. APA13546

DATA

Western blot analysis of MBTPS1 expression in Hela (A), SKOV3 (B), mouse liver (C), mouse kidney (D), rat brain (E) whole cell lysates. (Predicted band size: 117 kD; Observed band size: 117 kD)

STORAGE

Store at 4°C short term. For long term storage, store at -20°C, avoiding freeze/thaw cycles.

NOTE

For Research Use Only. Not for diagnostic, therapeutics, prophylactic or in vivo use.