

DATASHEET

MEP1A Rabbit Polyclonal Antibody

CAT. NO. APA13550

KEY FEATURES

Target	MEP1A	Source / Host	Rabbit
Reactivity	Human, Mouse, Rat	Clonality	Polyclonal
Applications	WB	Conjugation	Unconjugated
Form / Buffer	Liquid in 0.42% Potassium phosphate, 0.87% Sodium chloride, pH 7.3, 30% glycerol, and 0.01% sodium azide.		Storage at -20°C

BACKGROUND

Meprin A subunit alpha (MEP1A), also known as Endopeptidase-2, N-benzoyl-L-tyrosyl-P-amino-benzoic acid hydrolase subunit alpha, PABA peptide hydrolase. Subunit: Homotetramer consisting of disulfide-linked alpha subunits, homooligomer consisting of disulfide-linked alpha subunit homodimers, or heterotetramer of two alpha and two beta subunits formed by non-covalent association of two disulfide-linked heterodimers. Interacts with MBL2 through its carbohydrate moiety. This interaction may inhibit its catalytic activity. Subcellular location: Membrane PTM: N-glycosylated; contains GlcNAc, galactose, mannose and a small amount of fucose

APPLICATION

To ensure optimal assay performance, AREX recommends conducting reagent titration tailored to each testing system for optimal detection results.

WB	1:500 - 1:2000
----	----------------

*Results are sample-specific. Please refer to your local assay conditions and test parameters for reference.

PRODUCT OVERVIEW

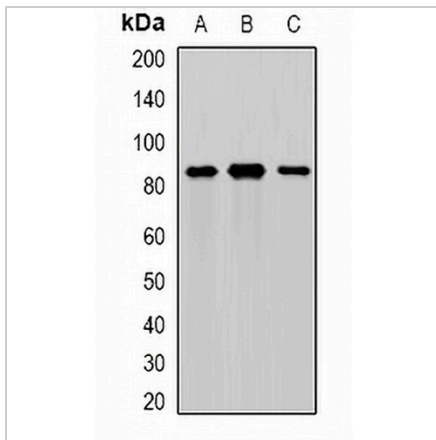
Description	Rabbit polyclonal antibody to MEP1A
Specificity	Recognizes endogenous levels of MEP1A protein.
Antibody Type	Primary antibody
Immunogen	Recombinant fusion protein of human MEP1A
Purification	The antibody was purified by immunogen affinity chromatography.
Molecular Weight	Predicted: 84 kD; Observed: 84 kD
Form/Buffer	Liquid in 0.42% Potassium phosphate, 0.87% Sodium chloride, pH 7.3, 30% glycerol, and 0.01% sodium azide.
Alternative Names	Meprin A subunit alpha; Endopeptidase-2; N-benzoyl-L-tyrosyl-P-amino-benzoic acid hydrolase subunit alpha; PABA peptide hydrolase; PPH alpha
Gene Symbol	MEP1A
Entrez Gene	4224(Human)
SwissProt	Q16819(Human)

*AREX continuously optimizes our products. Webpage content may not reflect the latest updates. For inquiries, please contact info@arexbio.com or your local distributor.

*Clone Number, Reactivity, Source/Host and Clonality can be found in the product name and Key Features section above.

DATASHEET**MEP1A Rabbit Polyclonal Antibody**

CAT. NO. APA13550

DATA

Western blot analysis of MEP1A expression in mouse intestine (A), mouse pancreas (B), rat kidney (C) whole cell lysates. (Predicted band size: 84 kD; Observed band size: 84 kD)

STORAGE

Store at 4°C short term. For long term storage, store at -20°C, avoiding freeze/thaw cycles.

NOTE

For Research Use Only. Not for diagnostic, therapeutics, prophylactic or in vivo use.