

DATASHEET

MICA Rabbit Polyclonal Antibody

CAT. NO. APA13551

KEY FEATURES

Target	MICA	Source / Host	Rabbit
Reactivity	Human, Mouse, Rat	Clonality	Polyclonal
Applications	WB	Conjugation	Unconjugated
Form / Buffer	Liquid in 0.42% Potassium phosphate, 0.87% Sodium chloride, pH 7.3, 30% glycerol, and 0.01% sodium azide.		Storage at -20°C

BACKGROUND

Widely expressed membrane-bound protein which acts as a ligand to stimulate an activating receptor KLRK1/NKG2D, expressed on the surface of essentially all human natural killer (NK), gammadelta T and CD8 alphabeta T-cells, gammadelta T and CD8 alphabeta T-cells. Up-regulated in stressed conditions, such as viral and bacterial infections or DNA damage response, serves as signal of cellular stress, and engagement of KLRK1/NKG2D by MICA triggers NK-cells resulting in a range of immune effector functions, such as cytotoxicity and cytokine production.

APPLICATION

To ensure optimal assay performance, AREX recommends conducting reagent titration tailored to each testing system for optimal detection results.

WB	1:500 - 1:1000
----	----------------

*Results are sample-specific. Please refer to your local assay conditions and test parameters for reference.

PRODUCT OVERVIEW

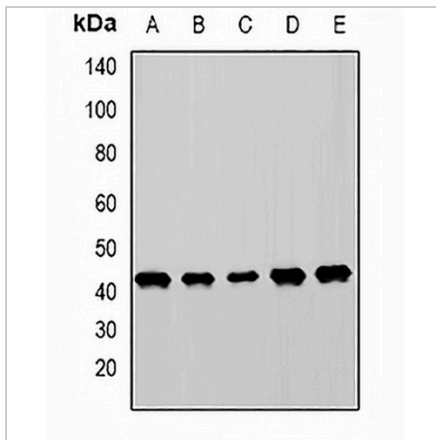
Description	Rabbit polyclonal antibody to MICA
Specificity	Recognizes endogenous levels of MICA protein.
Antibody Type	Primary antibody
Immunogen	Recombinant fusion protein of human MICA
Purification	The antibody was purified by immunogen affinity chromatography.
Molecular Weight	Predicted: 31; Observed: 43 kD
Form/Buffer	Liquid in 0.42% Potassium phosphate, 0.87% Sodium chloride, pH 7.3, 30% glycerol, and 0.01% sodium azide.
Alternative Names	PERB11.1; MHC class I polypeptide-related sequence A; MIC-A
Gene Symbol	MICA
Entrez Gene	100507436(Human)
SwissProt	Q29983(Human)

*AREX continuously optimizes our products. Webpage content may not reflect the latest updates. For inquiries, please contact info@arexbio.com or your local distributor.

*Clone Number, Reactivity, Source/Host and Clonality can be found in the product name and Key Features section above.

DATASHEET**MICA Rabbit Polyclonal Antibody**

CAT. NO. APA13551

DATA

Western blot analysis of MICA expression in MCF7 (A), SW480 (B), HeLa (C), mouse ovary (D), rat kidney (E) whole cell lysates. (Predicted band size: 31; 42 kD; Observed band size: 43 kD)

STORAGE

Store at 4°C short term. For long term storage, store at -20°C, avoiding freeze/thaw cycles.

NOTE

For Research Use Only. Not for diagnostic, therapeutics, prophylactic or in vivo use.