

DATASHEET

GBL Rabbit Polyclonal Antibody

CAT. NO. APA13552

KEY FEATURES

Target	GBL	Source / Host	Rabbit
Reactivity	Human, Mouse, Rat	Clonality	Polyclonal
Applications	WB	Conjugation	Unconjugated
Form / Buffer	Liquid in 0.42% Potassium phosphate, 0.87% Sodium chloride, pH 7.3, 30% glycerol, and 0.01% sodium azide.		Storage at-20°C

BACKGROUND

Subunit of both mTORC1 and mTORC2, which regulates cell growth and survival in response to nutrient and hormonal signals . mTORC1 is activated in response to growth factors or amino acids . In response to nutrients, mTORC1 is recruited to the lysosome membrane and promotes protein, lipid and nucleotide synthesis by phosphorylating several substrates, such as ribosomal protein S6 kinase (RPS6KB1 and RPS6KB2) and EIF4EBP1 (4E-BP1) . In the same time, it inhibits catabolic pathways by phosphorylating the autophagy initiation components ULK1 and ATG13, as well as transcription factor TFEB, a master regulators of lysosomal biogenesis and autophagy . The mTORC1 complex is inhibited in response to starvation and amino acid depletion .

APPLICATION

To ensure optimal assay performance, AREX recommends conducting reagent titration tailored to each testing system for optimal detection results.

WB	1:500 - 1:1000
----	----------------

*Results are sample-specific. Please refer to your local assay conditions and test parameters for reference.

PRODUCT OVERVIEW

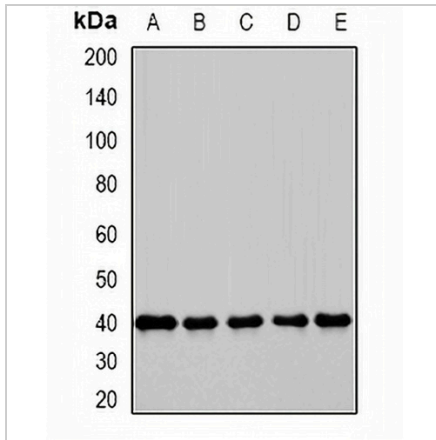
Description	Rabbit polyclonal antibody to GBL
Specificity	Recognizes endogenous levels of GBL protein.
Antibody Type	Primary antibody
Immunogen	Recombinant fusion protein of human GBL
Purification	The antibody was purified by immunogen affinity chromatography.
Molecular Weight	Predicted: 23; Observed: 37 kD
Form/Buffer	Liquid in 0.42% Potassium phosphate, 0.87% Sodium chloride, pH 7.3, 30% glycerol, and 0.01% sodium azide.
Alternative Names	GBL; LST8; Target of rapamycin complex subunit LST8; TORC subunit LST8; G protein beta subunit-like; Gable; Protein GbetaL; Mammalian lethal with SEC13 protein 8; mLST8
Gene Symbol	MLST8
Entrez Gene	64223(Human); 56716(Mouse); 64226(Rat)
SwissProt	Q9BVC4(Human); Q9DCJ1(Mouse); Q9Z2K5(Rat)

*AREX continuously optimizes our products. Webpage content may not reflect the latest updates. For inquiries, please contact info@arexbio.com or your local distributor.

*Clone Number, Reactivity, Source/Host and Clonality can be found in the product name and Key Features section above.

DATASHEET**GBL Rabbit Polyclonal Antibody**

CAT. NO. APA13552

DATA

Western blot analysis of GBL expression in K562 (A), HepG2 (B), COS7 (C), mouse testis (D), mouse spleen (E) whole cell lysates. (Predicted band size: 23; 28; 35 kD; Observed band size: 37 kD)

STORAGE

Store at 4°C short term. For long term storage, store at -20°C, avoiding freeze/thaw cycles.

NOTE

For Research Use Only. Not for diagnostic, therapeutics, prophylactic or in vivo use.